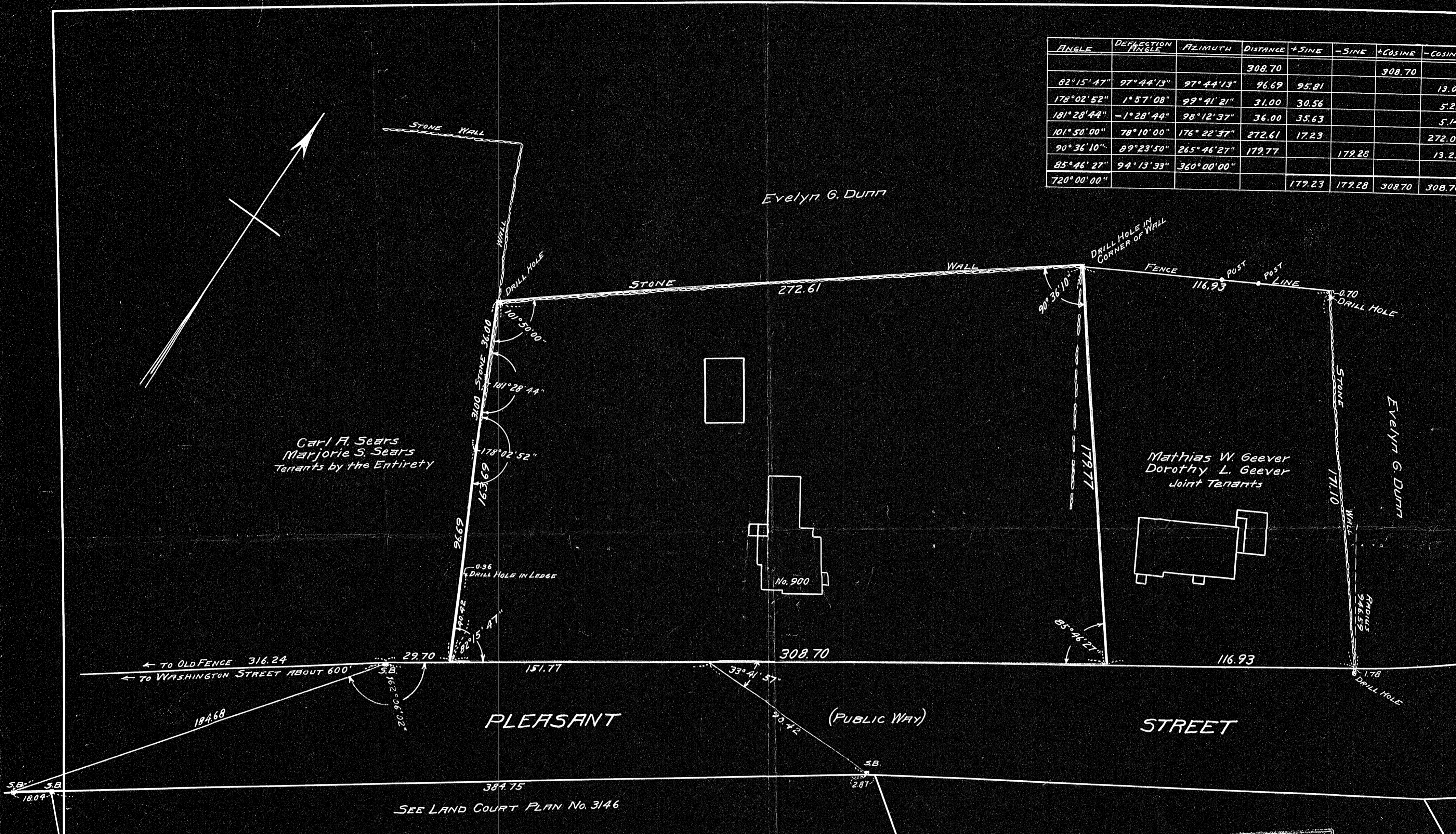


21774A

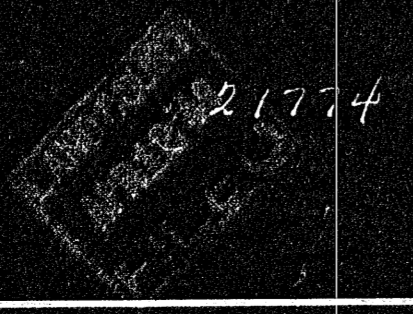
ANGLE	DEFLECTION ANGLE	AZIMUTH	DISTANCE	+SINE	-SINE	+COSINE	-COSINE
			308.70			308.70	
82°15'47"	97°44'13"	97°44'13"	96.69	95.81			13.02
178°02'52"	1°57'08"	99°41'21"	31.00	30.56			5.22
181°28'44"	-1°28'44"	98°12'37"	36.00	35.63			5.14
101°50'00"	78°10'00"	176°22'37"	272.61	17.23			272.07
90°36'10"	89°23'50"	265°46'27"	179.77		179.28		13.25
85°46'27"	94°13'33"	360°00'00"					
720°00'00"				179.23	179.28	308.70	308.70



PLAN OF LAND IN WEYMOUTH, MASS.
 SCALE: 1" = 30'
 MARCH 11, 1949
 RUSSELL H. WHITING, REGISTERED LAND SURVEYOR
 NORTH WEYMOUTH, MASS.

DECEASED PLAN
 Under _____ Papers _____
 Traverse filed ON PLAN
 Aided by _____
 Drawn by _____
 Made by _____
 Inspected by _____
 Approved by _____

I CERTIFY THAT THIS SURVEY WAS MADE IN ACCORDANCE WITH
 LAND COURT INSTRUCTIONS
 DATE: March 11, 1949
 Russell H. Whiting, SURVEYOR



21774A