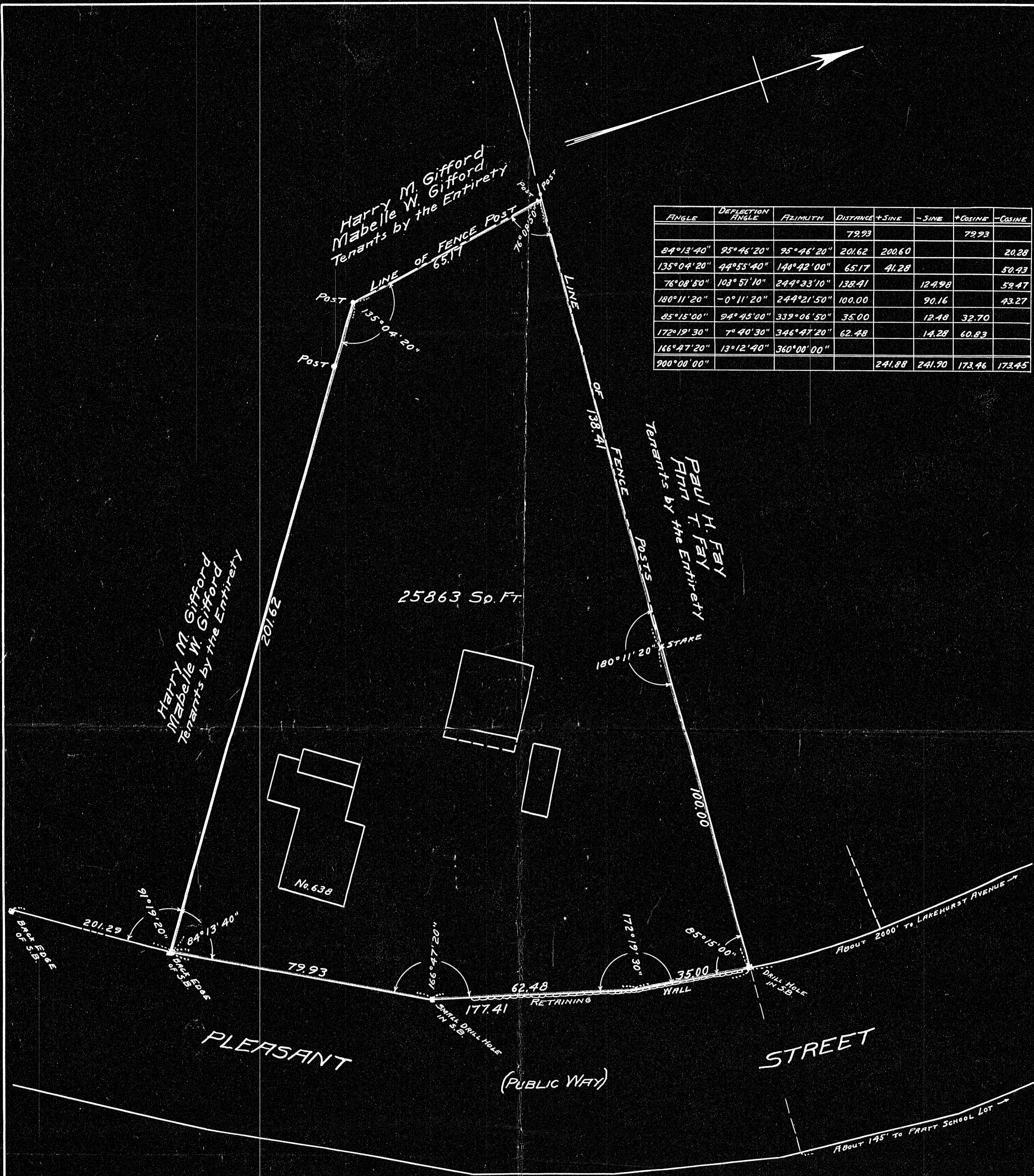


ANGLE	DEFLECTION ANGLE	AZIMUTH	DISTANCE	+SINE	-SINE	+COSINE	-COSINE
			79.93			79.93	
84°13'40"	95°46'20"	95°46'20"	201.62	200.60			20.28
135°04'20"	44°53'40"	140°42'00"	65.17	41.28			50.43
76°08'50"	103°51'10"	244°33'10"	138.41		124.98		59.47
180°11'20"	-0°11'20"	244°21'50"	100.00		90.16		43.27
85°15'00"	94°45'00"	339°06'50"	35.00		12.48	32.70	
172°19'30"	7°40'30"	346°47'20"	62.48		14.28	60.83	
166°47'20"	13°12'40"	360°00'00"					
200°00'00"				241.88	241.90	173.46	173.45



PLAN OF LAND IN WEYMOUTH, MASS.  
 SCALE: 1" = 20'  
 JAN. 3, 1949  
 RUSSELL H. WHITING, REGISTERED LAND SURVEYOR  
 NORTH WEYMOUTH, MASS.

21606  
 PL 39

DECREE PLAN  
 Order.....Papers.....  
 Traverse filed ON PLAN  
 Atlas.....  
 Drawn by.....  
 Math. by.....  
 Inspected by.....  
 Approved.....

I CERTIFY THAT THIS SURVEY WAS MADE IN ACCORDANCE WITH  
 LAND COURT INSTRUCTIONS  
 DATE: January 3, 1949  
 Russell H. Whiting, SURVEYOR