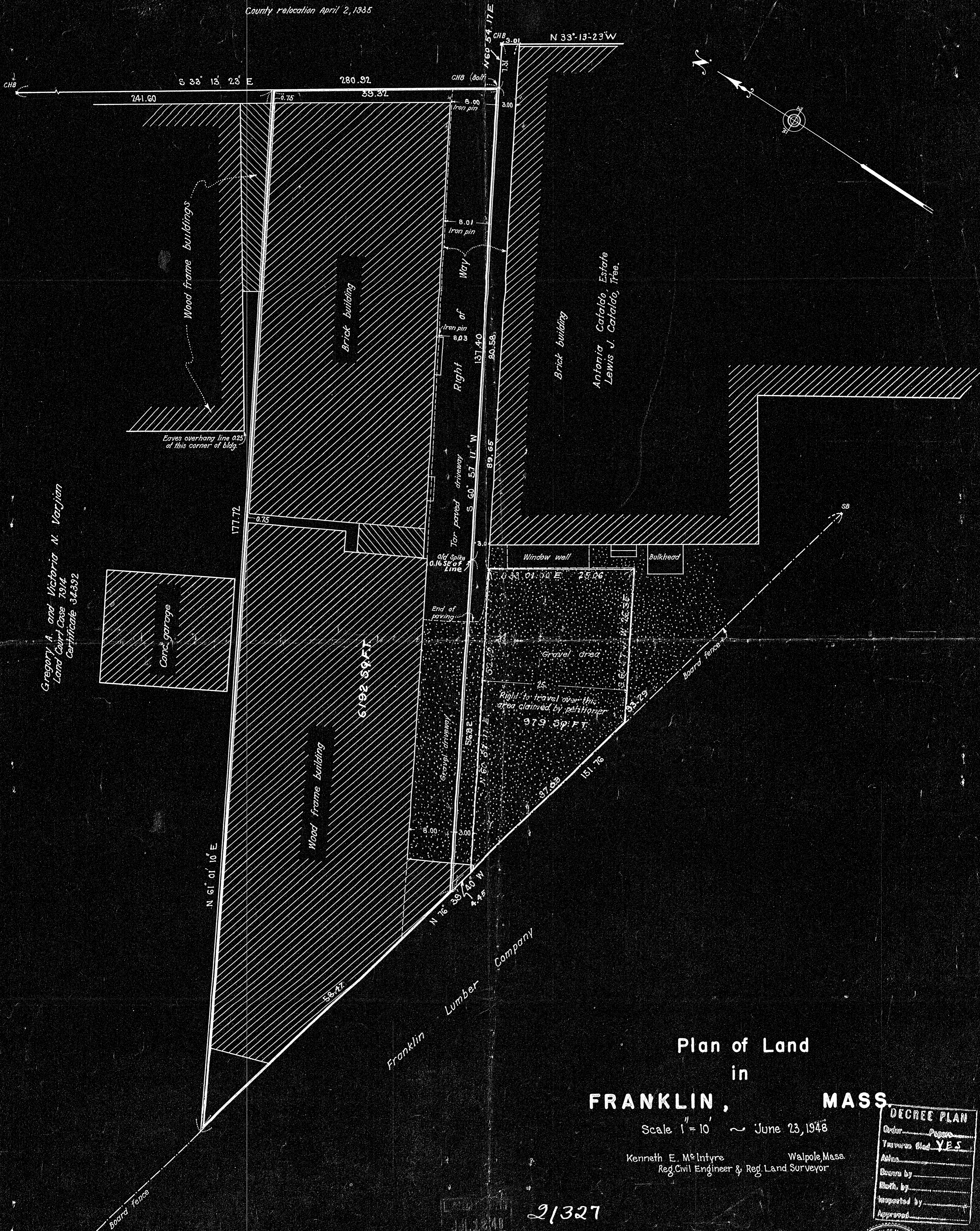


21327A

MAIN STREET (Public)

County relocation April 2, 1935



Gregory A. and Victoria N. Varjian
 Land Court Case 7974
 Certificate 34392

Plan of Land
 in
FRANKLIN, MASS.

Scale 1" = 10' ~ June 23, 1948

Kenneth E. McIntyre Walpole, Mass.
 Reg. Civil Engineer & Reg. Land Surveyor

21327

Order	Pages
Traverse	Check YES
Area	
Survey	by
Revised	by
Respected	by
Approved	



I certify that this plan was made in accordance
 with Land Court requirements.
 Kenneth E. McIntyre
 Reg. Civil Engr. & Reg. Land Surveyor

21327A