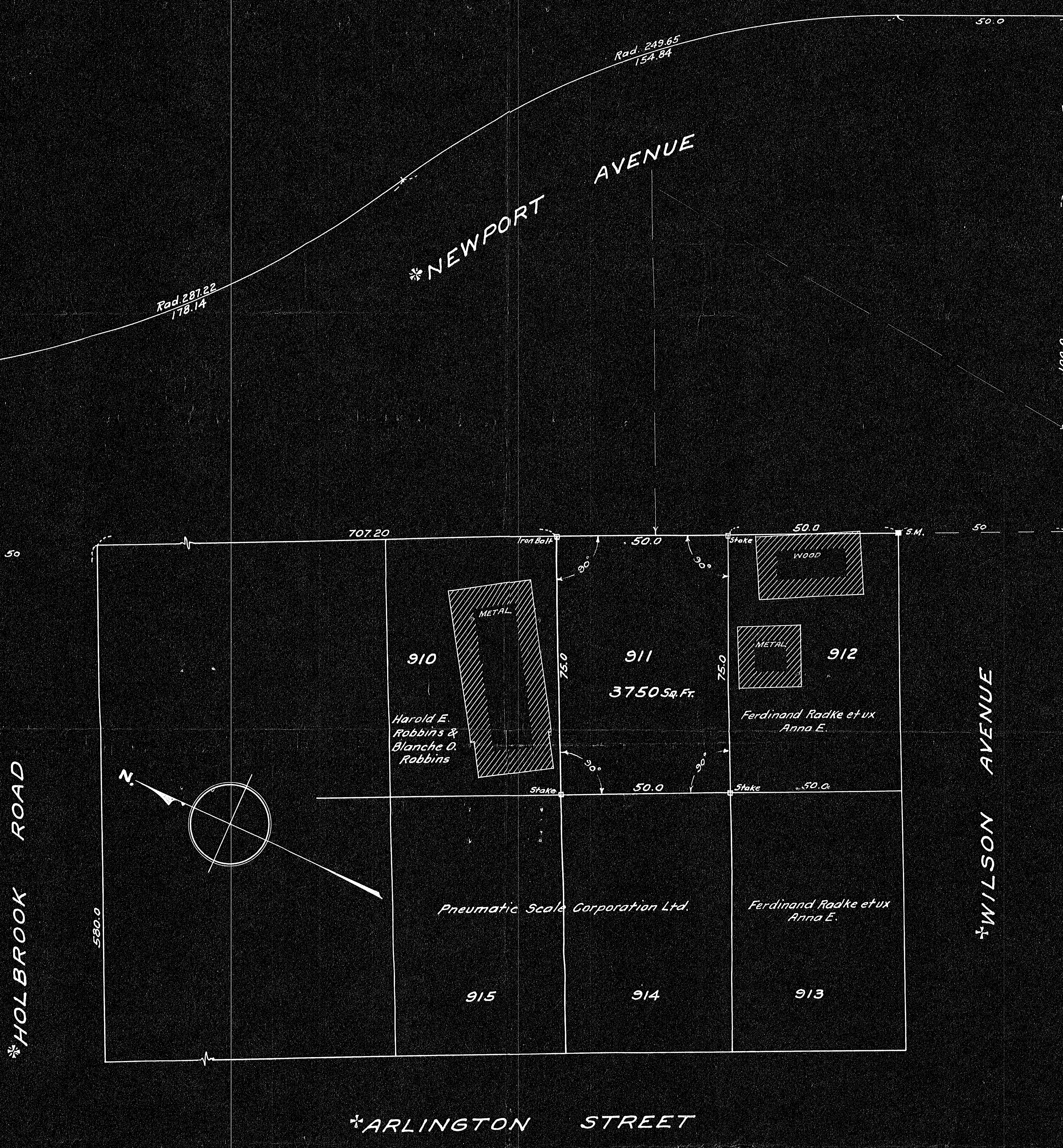


21325A



DECREE PLAN	
Order	Pages
Transverse filed	$N O$
Index	
Drawn by	
Meas. by	
Inspected by	
Approved	

Plan of Land in Quincy
 Scale 20 feet to an inch
 June 1, 1948
 Ernest W. Branch Inc Civil Engineers
 11 Adams Building, Quincy

21325

I certify that this survey was made in accordance
 with Land Court instructions.
 June 1, 1948 George H. Newcomb, Surveyor

21325A

* FARRINGTON STREET

* ARLINGTON STREET

* HOLBROOK ROAD

* WILSON AVENUE

* NEWPORT AVENUE