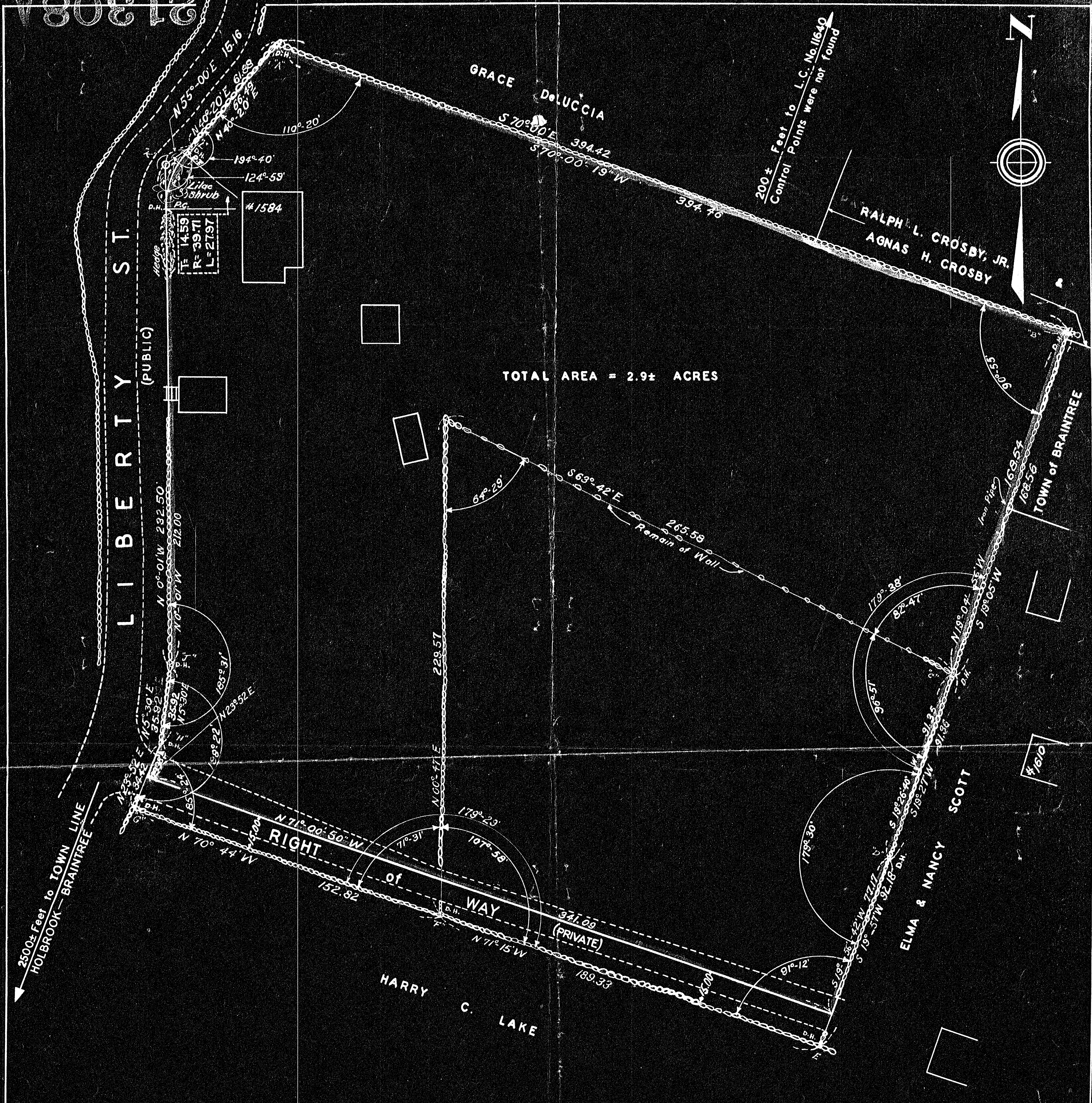


21308A

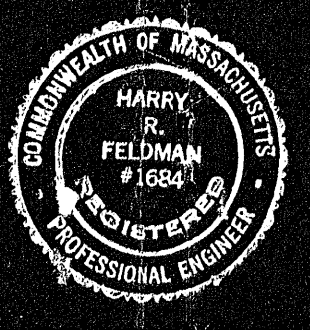


TOTAL AREA = 2.9± ACRES

DECREE PLAN	
Order	Papers
Reviewed	YES
Advised	
Surveyed by	
Drawn by	
Accepted by	
Approved	

I certify that this survey was made in accordance with  
 Land Court instructions.  
 May 14, 1948.

*Harry R. Feldman*



21308 BRAINTREE PL 1025  
 PLAN of LAND  
 LIBERTY STREET  
 BRAINTREE, MASS.  
 SCALE: 1 Inch = 30 Feet — MAY 14, 1948.  
 HARRY R. FELDMAN — ENGINEER — BOSTON, MASS.

21308A