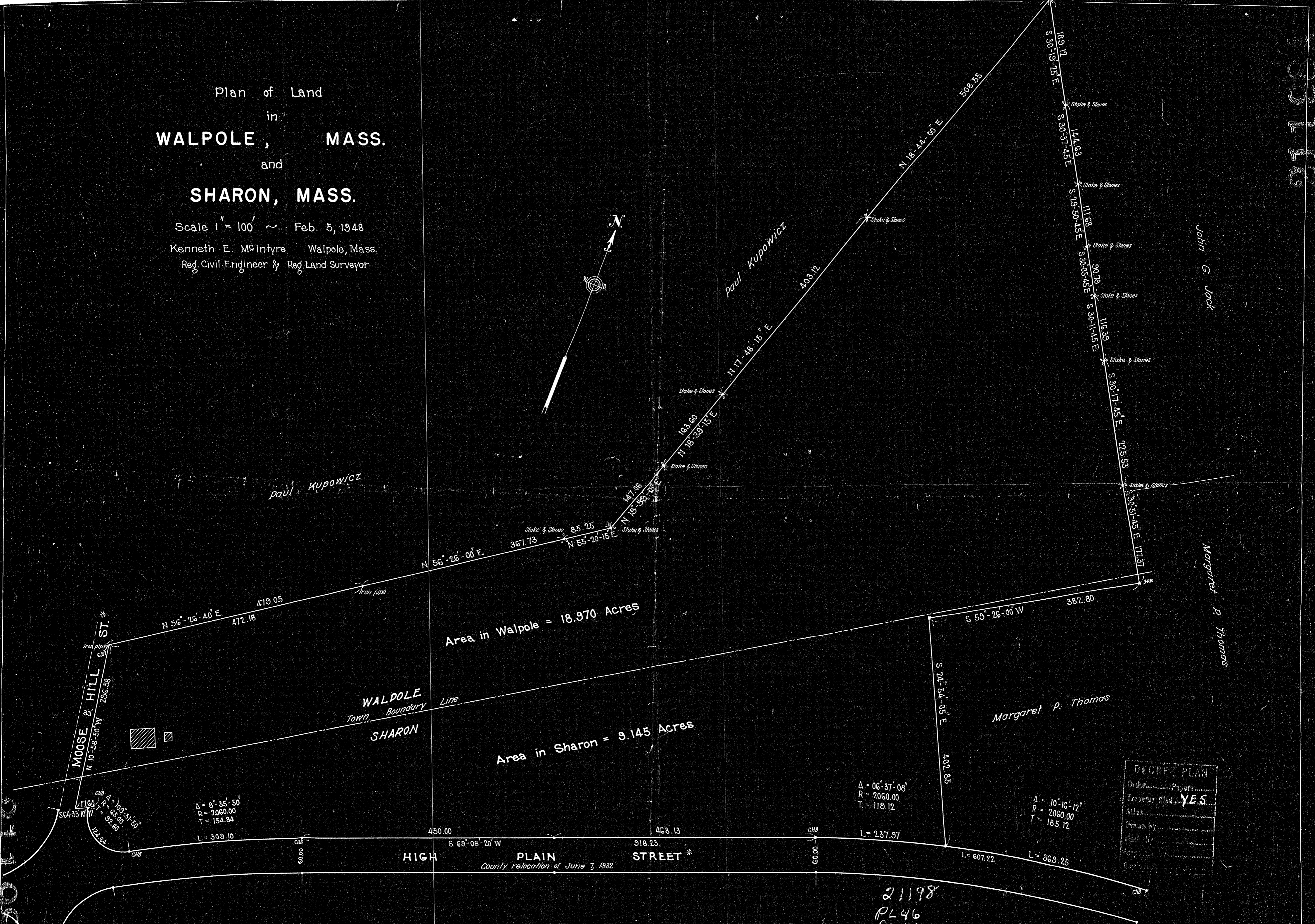
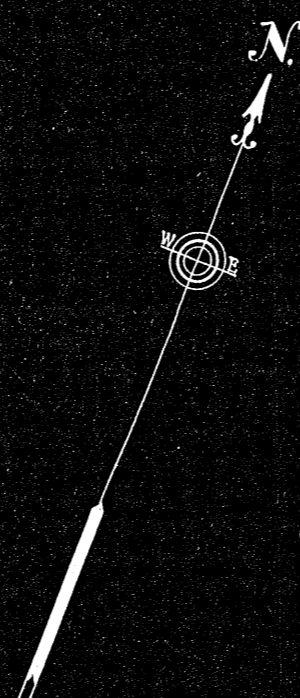


Plan of Land
in
WALPOLE, MASS.
and
SHARON, MASS.

Scale 1" = 100' ~ Feb. 5, 1948

Kenneth E. McIntyre Walpole, Mass.
Reg. Civil Engineer & Reg. Land Surveyor



Area in Walpole = 18.970 Acres

Area in Sharon = 9.145 Acres

$\Delta = 06^{\circ}37'08''$
 $R = 2060.00$
 $T = 119.12$

$\Delta = 10^{\circ}16'12''$
 $R = 2060.00$
 $T = 185.12$

DECREE PLAN
Order Papers
Traverse filed **YES
Atlas
Drawn by
Math. by
Stamps by**

21198
PL 46
PL 42

Note: I certify that this survey was made in accordance with Land Court requirements.

Kenneth E. McIntyre
Reg. Civil Engineer & Reg. Land Surveyor