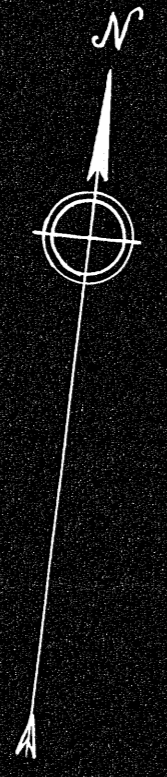


21030A



I CERTIFY THIS SURVEY WAS MADE IN ACCORDANCE WITH LAND COURT INSTRUCTIONS
 SEPT. 25, 1947
Francis H. Ledyard
 SURVEYOR
 206 SCHOOL ST.
 SOMERVILLE, MASS.

PLAN OF LAND IN
 RANDOLPH, MASS.
 BELONGING TO
DANIEL P. CLIFFORD
 AND
JOHN P. DONAHOE
 SCALE 1" = 20'
 SEPT. 25, 1947

DEGREE PLAN
 Order of Survey
 Reverse Map NO
 Date
 Drawn by
 Math. by
 Checked by

21030

21030