

21005A

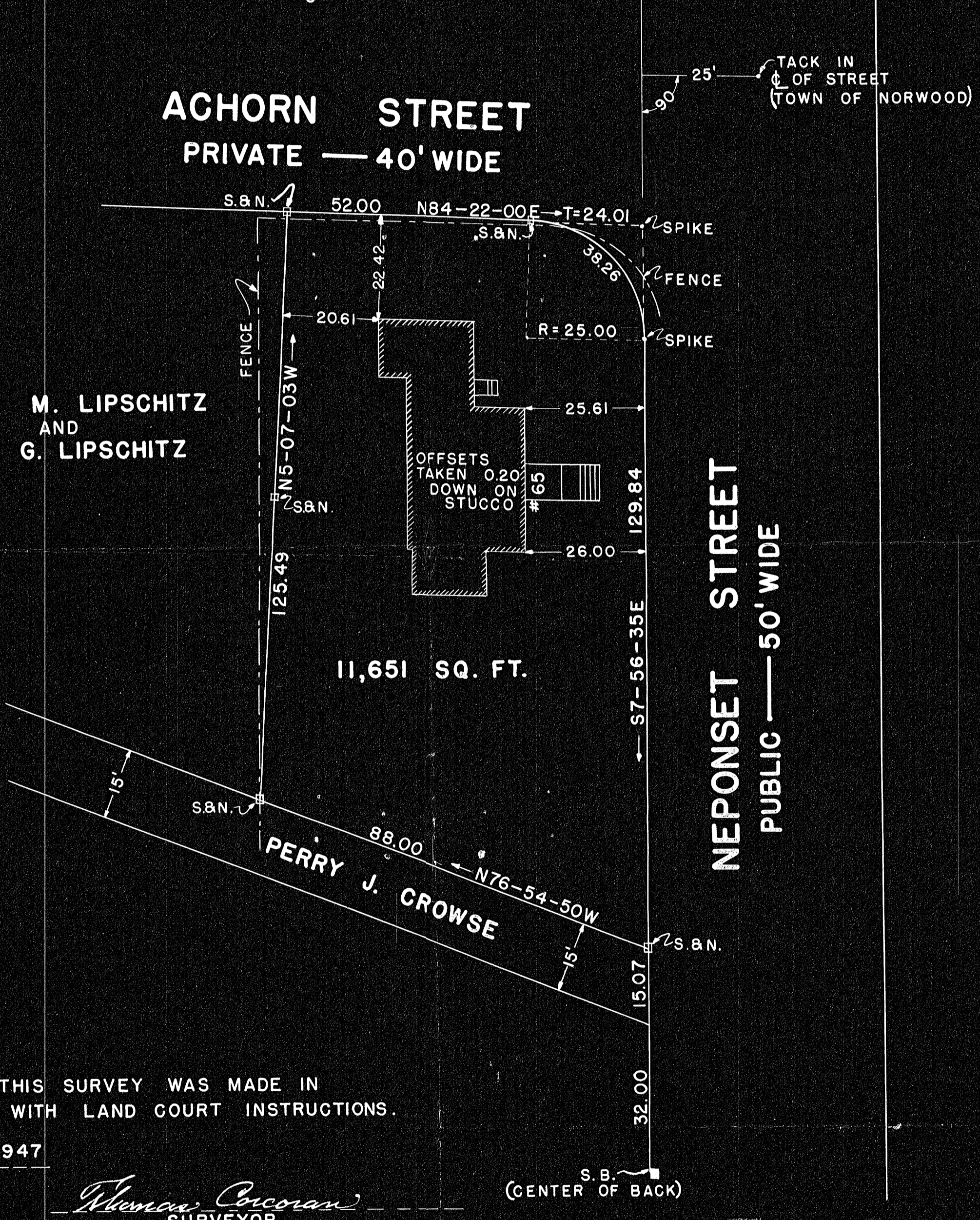


ACHORN STREET
PRIVATE — 40' WIDE

ABRAHAM M. LIPSCHITZ
AND
PEARL G. LIPSCHITZ

11,651 SQ. FT.

NEPONSET STREET
PUBLIC — 50' WIDE



I CERTIFY THAT THIS SURVEY WAS MADE IN
ACCORDANCE WITH LAND COURT INSTRUCTIONS.
NOVEMBER 3, 1947

Thomas Corcoran
SURVEYOR

TRAVERSE COMPUTATIONS

BEARING	DISTANCE	LATITUDE		DEPARTURE		D.M.D.	DOUBLE AREA	
		NORTH	SOUTH	EAST	WEST		+	-
N76-54-50W	88.00	19.92			85.71	108.09		2153.2
N5-07-03W	125.49	124.99			11.19	11.19		1398.6
N84-22-00E	76.01	7.46		75.64		75.64	564.3	
S7-56-35E	153.85		152.37	21.26		172.54	26,289.9	
		152.37	152.37	96.90	96.90		26,854.2	3551.8

PLAN
SECTION PLAN
T. CORCORAN
NOVEMBER 3, 1947

PLAN OF LAND
IN
NORWOOD, MASS.

SCALE 1" = 20' NOVEMBER 3, 1947

T. CORCORAN — SOMERVILLE, MASS.

21005A