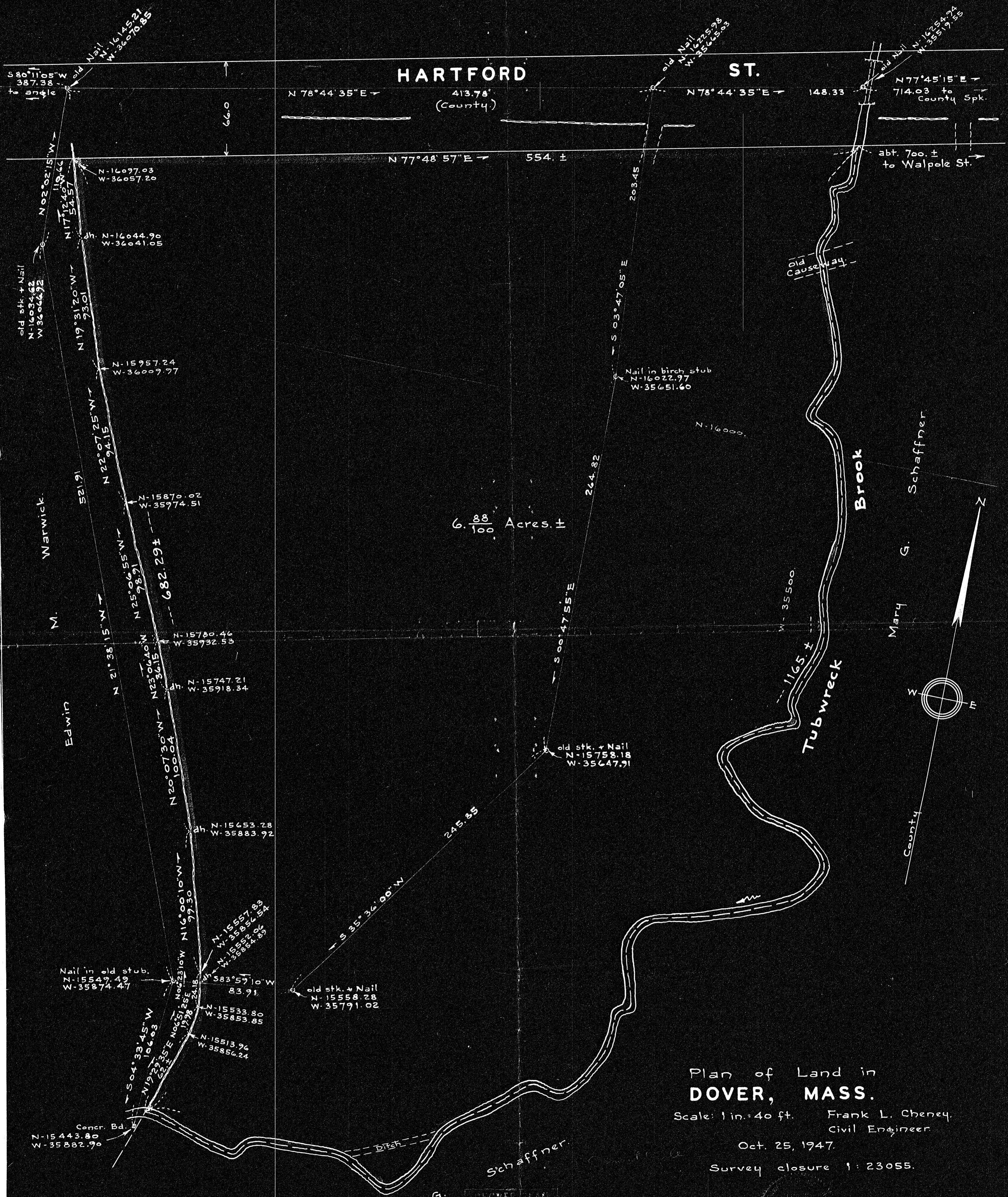


20893



HARTFORD ST.

ST.

6.88 Acres ±

Plan of Land in DOVER, MASS.

Scale: 1 in. = 40 ft. Frank L. Cheney, Civil Engineer

Oct. 25, 1947.

Survey closure 1: 23055.

DECEMBER 1947
 Approved by
 Review by N.A.
 Drawn by
 Checked by

20898

20893

I certify that this plan was made in accordance with Land Court instructions.

Frank L. Cheney, Civil Engineer