

20644A

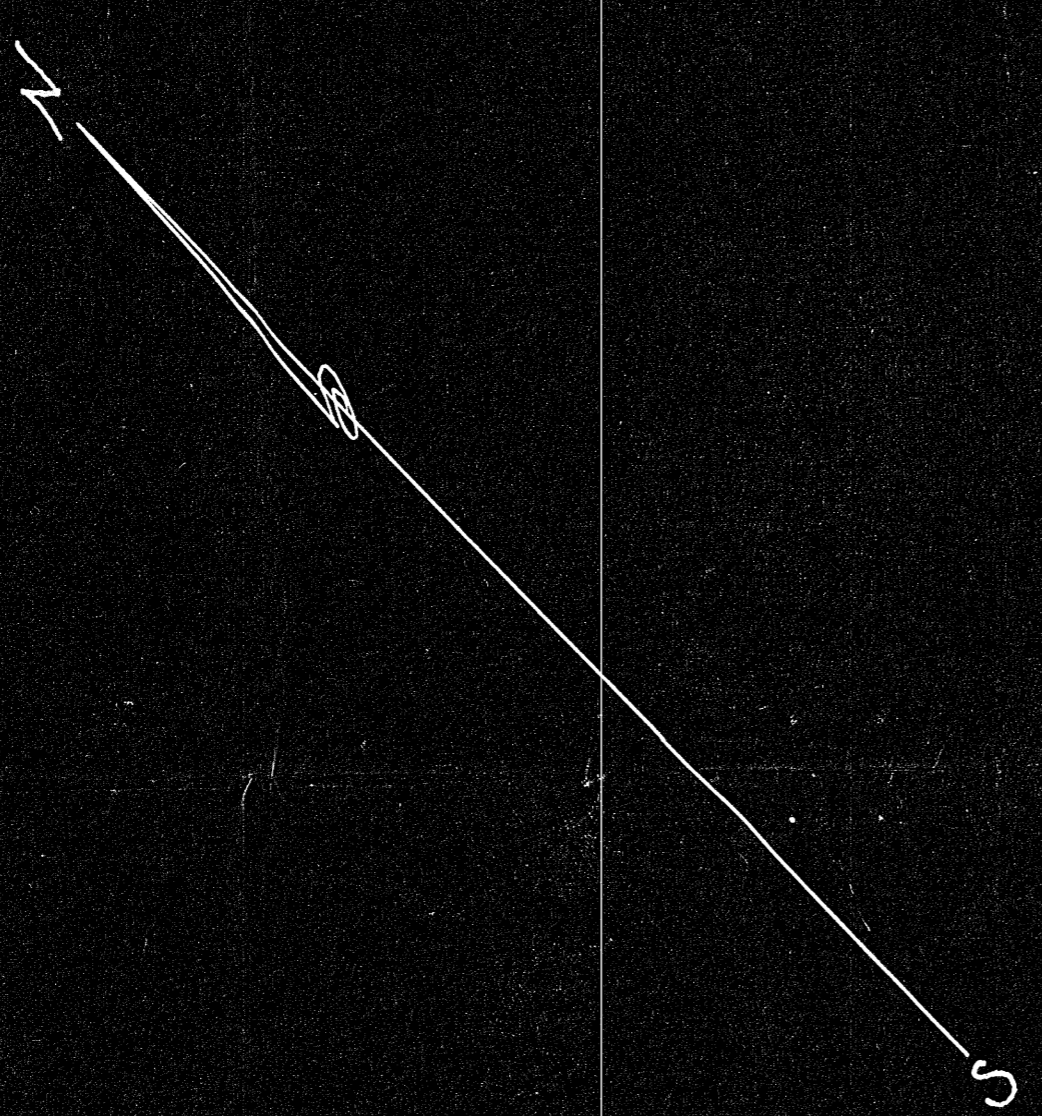
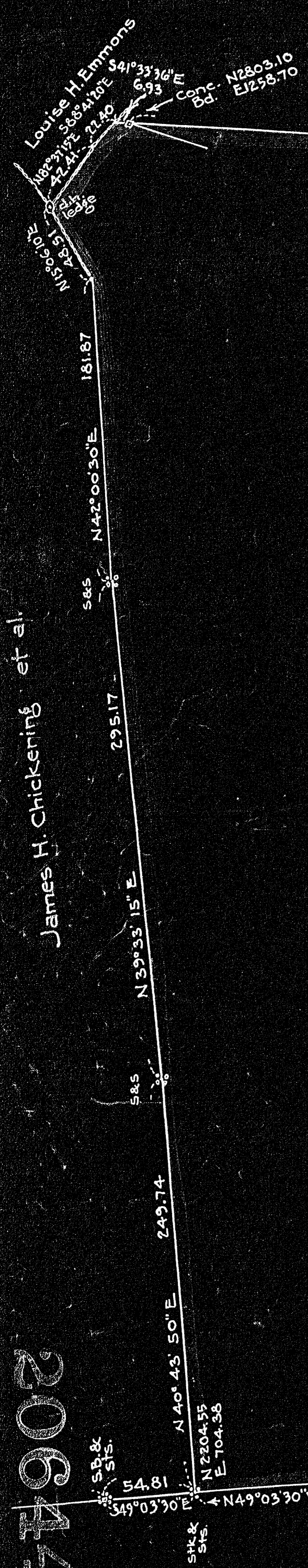
James H. Chickering et al.

(Plan Bk. 78-3764)

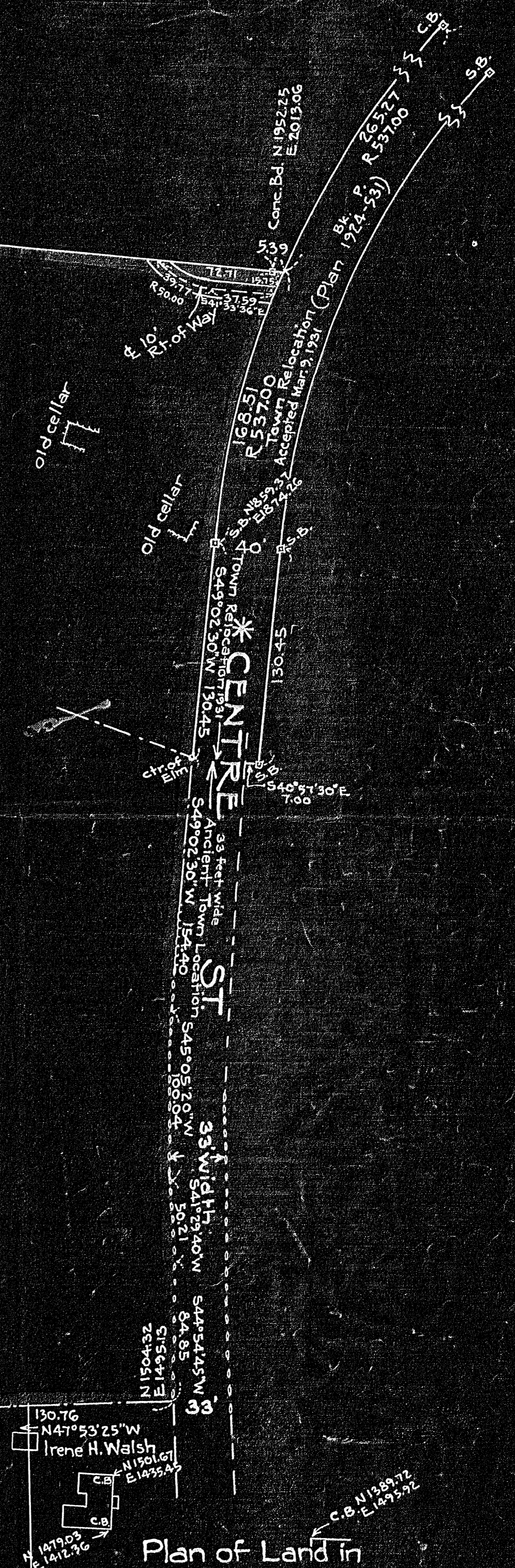
Herman A. Scholz and Elizabeth A.A. Scholz

541° 33' 36" E 1137.10

18.99 Acres



DEGREES  
MINUTES  
SECONDS  
NO



This survey conforms to Land Court Instructions. G.W. Pilling

Harry C. Chester

20644

Plan of Land in  
**DOVER MASS.**  
Scale 1 inch = 60 feet  
April 7, 1942  
E.W. Pilling  
Engineer

20644A