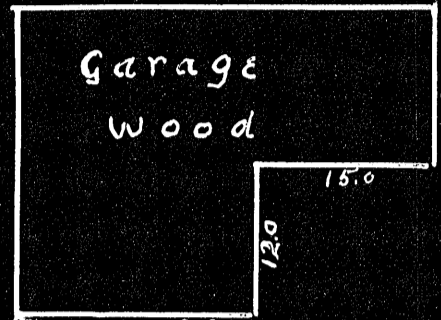


County B'd.

Survey: Class B'
 South Weymouth, Union St. opposite Junction of Central St.
 Scale 1/16" = 1' May 10, 1947
 Arthur J. Cavanagh, Surveyor, 15 Bellevue, Road, Braintree

I CERTIFY THAT THIS SURVEY WAS MADE
 IN ACCORDANCE WITH LAND COURT INSTRUCTIONS
 MAY 10, 1947 ARTHUR J. CAVANAGH, SURVEYOR

Clara B. Shaw



Annie T. Thackleberry

24,898' Area

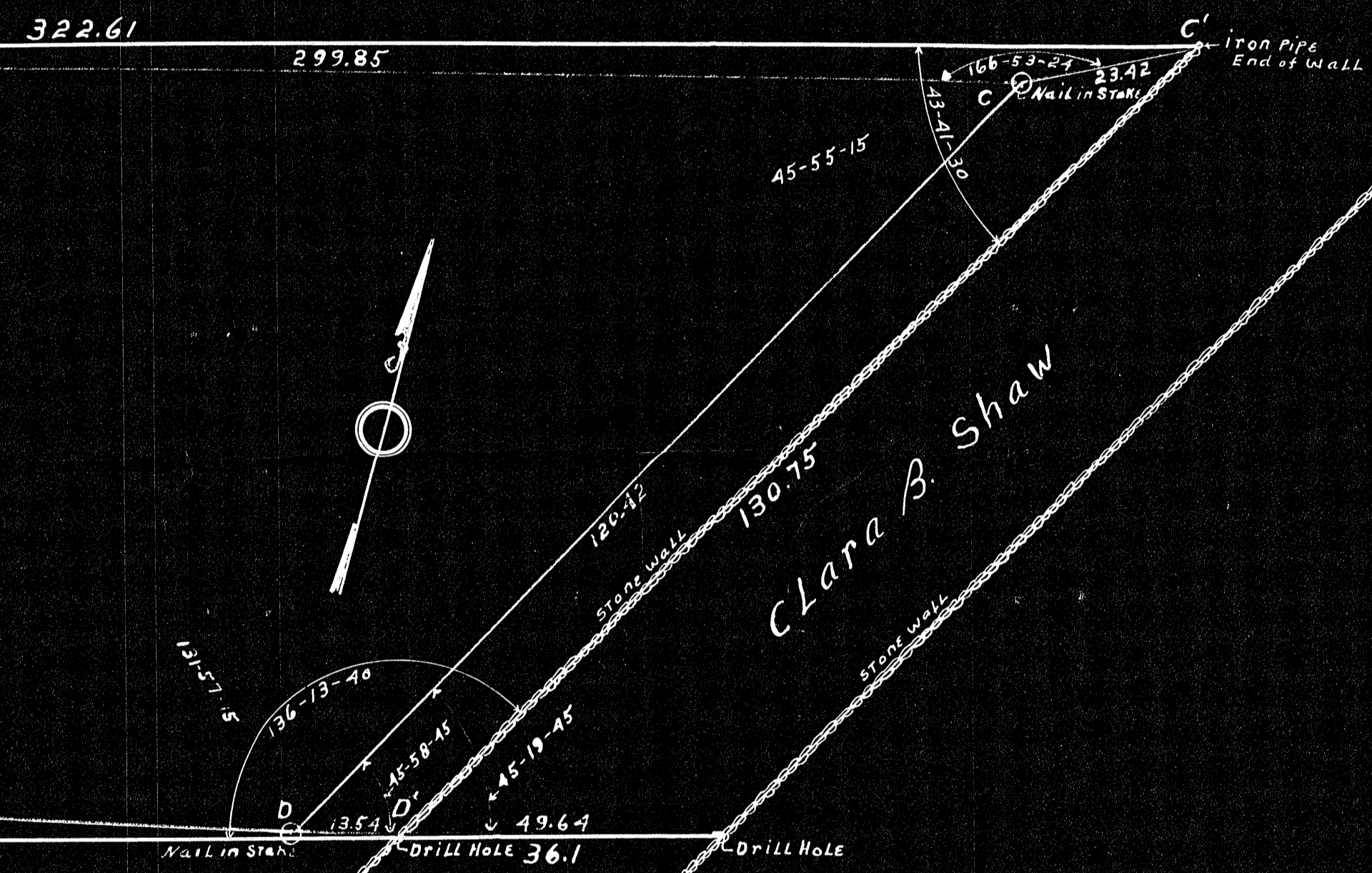
Joseph W. Webber
 Winnifred M. Webber

This Area: Land Court Case # 10,655 A

* Union St. width scale 1/16" = 2'

Central St

3.5' 157.14
 3.4' 78.52
 90.0' 90.0'
 3.12' 80.76
 3.5' 295.6



20609 PL 50

YES

Map by _____

Drawn by _____

Checked by _____

Approved by _____

County B'd.