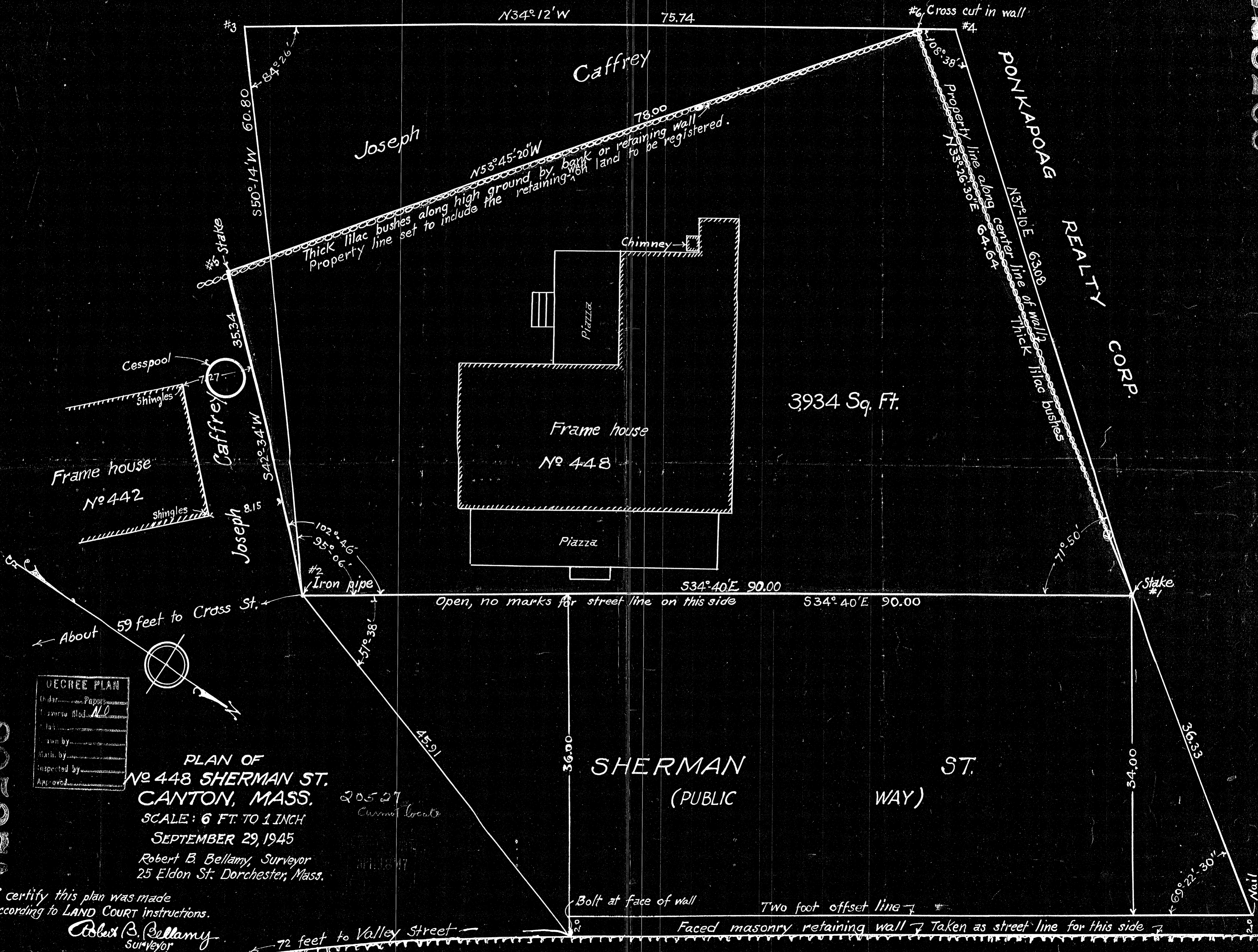


1422902

205271



DEGREE PLAN
 Order of Paper
 Surveyed No. 110
 Made by
 Inspected by
 Approved by

**PLAN OF
 No 448 SHERMAN ST.
 CANTON, MASS.**

SCALE: 6 FT. TO 1 INCH
 SEPTEMBER 29, 1945

Robert B. Bellamy, Surveyor
 25 Eldon St. Dorchester, Mass.

I certify this plan was made
 according to LAND COURT instructions.

Robert B. Bellamy
 Surveyor

20527
 Current local

72 feet to Valley Street

Bolt at face of wall

Two foot offset line

Faced masonry retaining wall Taken as street line for this side

Nail