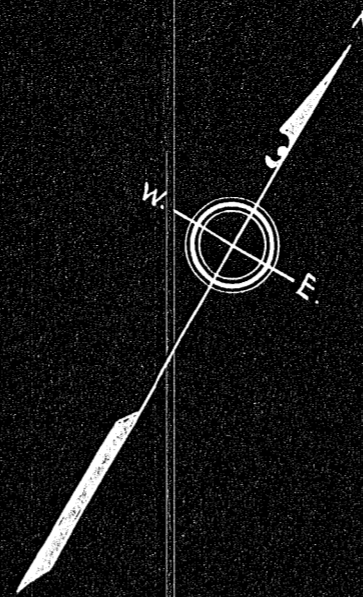


# Plan of Land in Stoughton

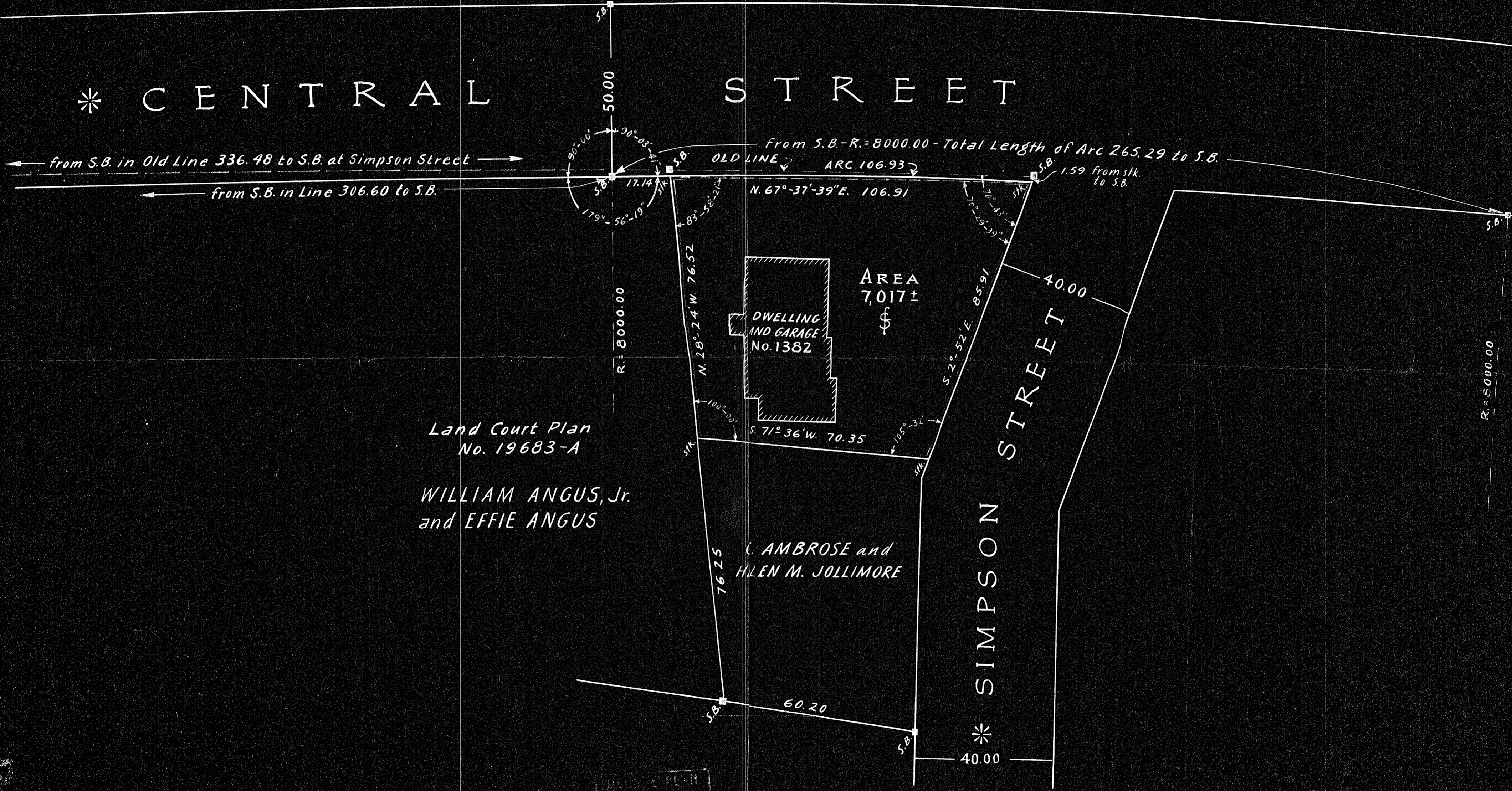
Scale 20 feet to an inch

JANUARY 15, 1947

Walter G. Pratt, Surveyor  
Stoughton, Mass.



\* CENTRAL STREET



Land Court Plan  
No. 19683-A  
WILLIAM ANGUS, Jr.  
and EFFIE ANGUS

C. AMBROSE and  
HELEN M. JOLLIMORE

DEED PLAN
Traced and YES
Drawn by
Math. by
Inspected by
Approved

20427

I certify that this survey was made in  
accordance with Land Court Instructions.  
Jan. 15, 1947 - Walter G. Pratt, Surveyor.

20427A

R = 5000.00

50.00

R = 8000.00

76.25

60.20

40.00

40.00

from S.B. in Old Line 336.48 to S.B. at Simpson Street

from S.B. in Line 306.60 to S.B.

From S.B. - R = 8000.00 - Total Length of Arc 265.29 to S.B.

OLD LINE ARC 106.93

1.59 from stk. to S.B.

N. 67°-37'-39" E. 106.91

N. 28°-24' W. 76.52

S. 71°-36' W. 70.35

S. 2°-52' E. 85.91

SIMPSON STREET

AREA 7,017±

DWELLING AND GARAGE No. 1382

50°-00'

30°-03'

17.14

56°-19'

83°-52'-27"

100°-00'

179°-56'-19"

58

58

58

58

58

58

58

58

58

58

58

58

58

58

58

58

58

58

58

58

58

58

58

58

58

58