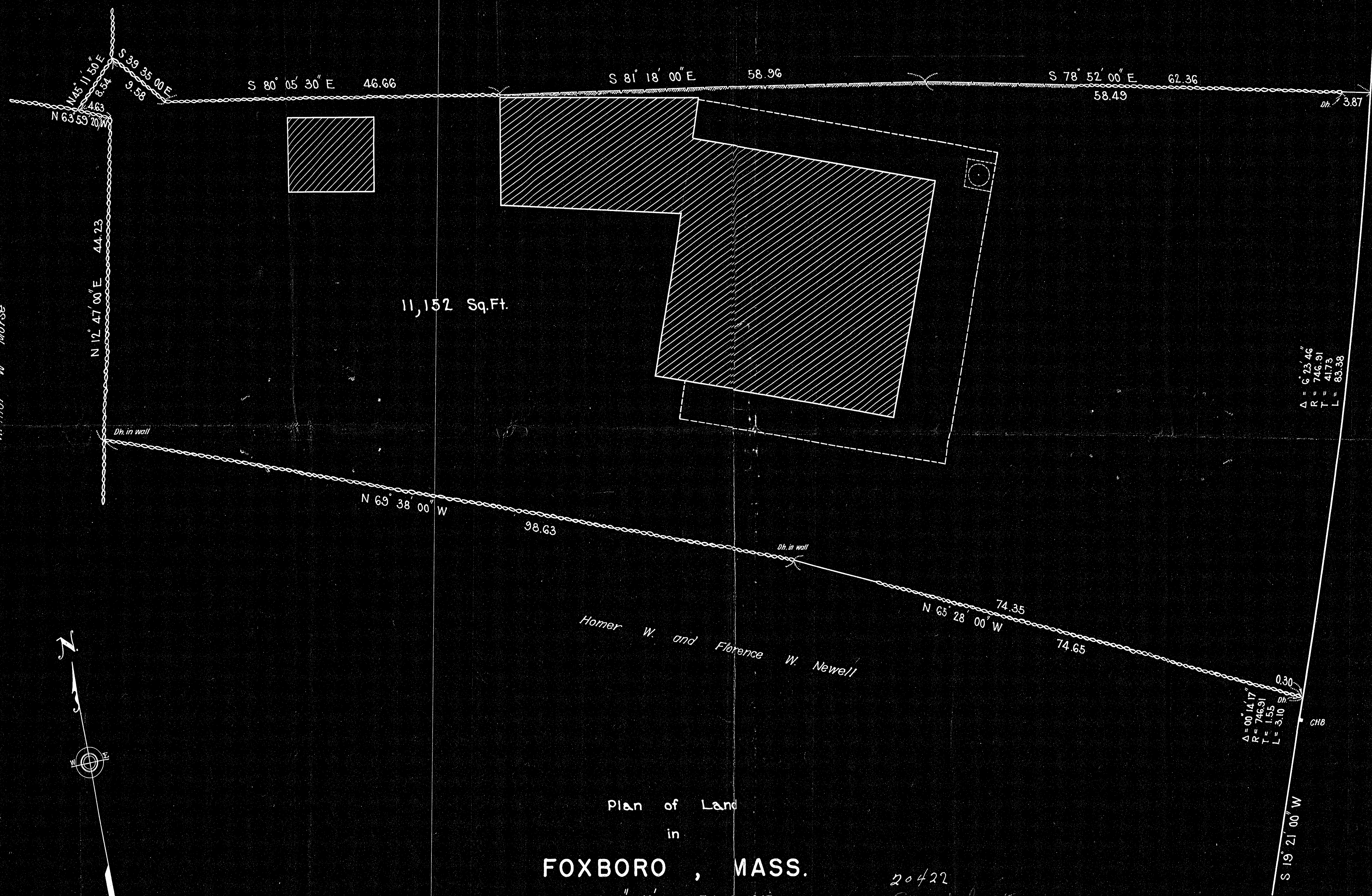


CHB

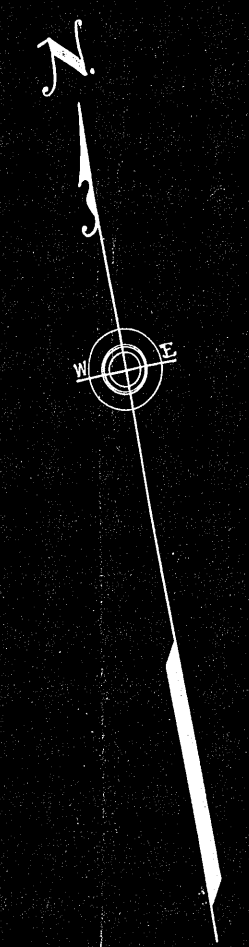
George T. and Effie L. Wheeler

$\Delta = 5^{\circ} 10' 57''$
 $R = 746.51$
 $T = 35.80$
 $L = 67.56$



$\Delta = 6^{\circ} 23' 46''$
 $R = 746.51$
 $T = 41.73$
 $L = 85.38$

NORTH STREET
County Reclamation of Dec. 1899



Plan of Land
in
FOXBORO, MASS.

Scale 1" = 10' ~ Feb. 20, 1947

Kenneth E. McIntyre
Civil Engineer & Registered Land Surveyor
Walpole, Mass.

20422
Camm. Invt.

I certify that this survey was made in accordance with Land Court requirements.

Kenneth E. McIntyre
Registered Land Surveyor