

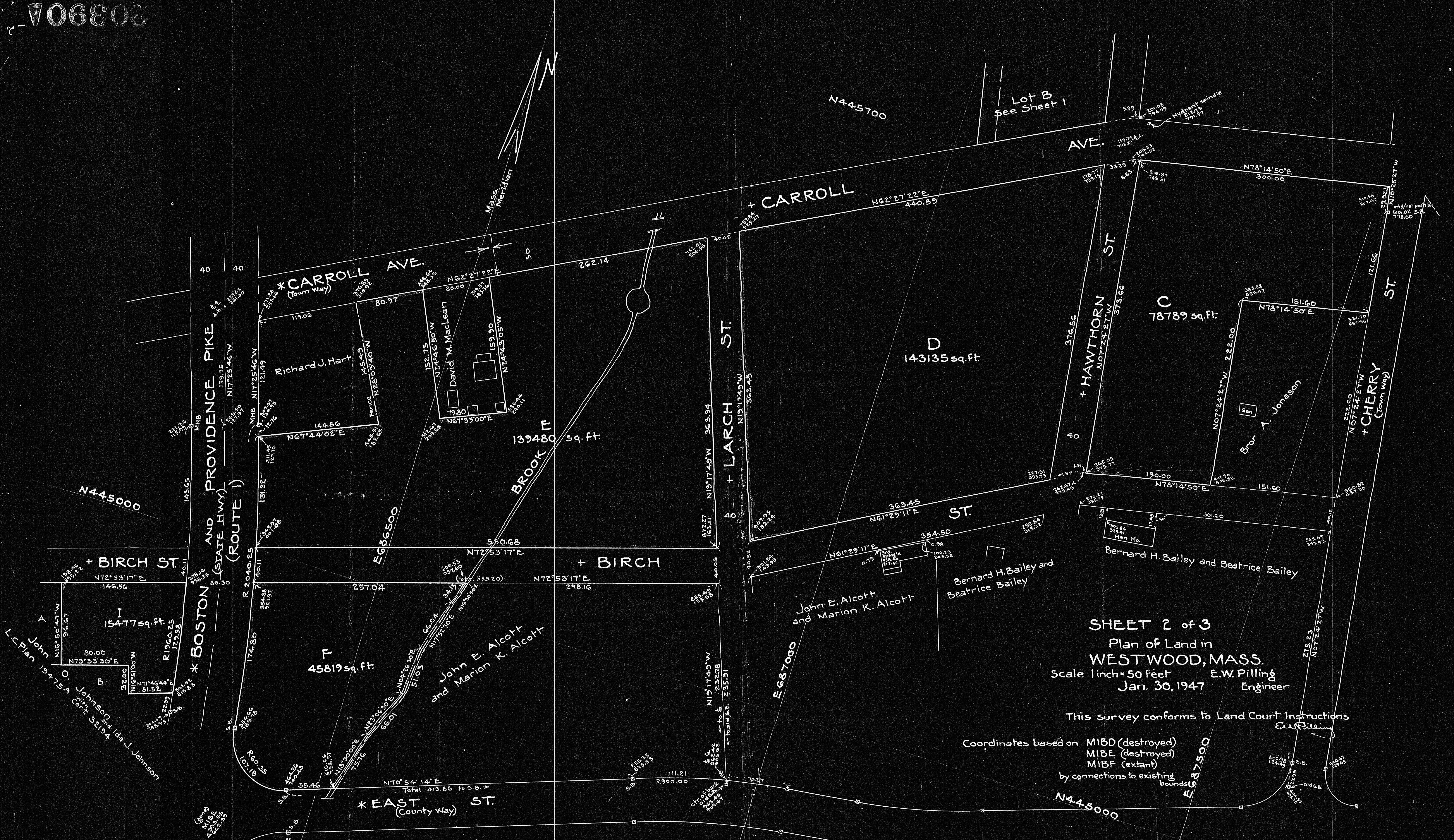
Sheet 1 of 3
 Plan of Land in
WESTWOOD, MASS.
 Scale 1 inch = 40 feet E.W. Pilling
 Jan. 30, 1947 Engineer

This Survey conforms to Land Court Instructions
 E.W. Pilling

Coord. based on MIBE
 Az. based on MIBD, MIBE, MIBF
 (MIBD, MIBE now destroyed 1947
 but previously connected to existing bds)

DECREE PLAN	
Order	Page
Traverse	File
Atlas	
Drawn by	
Math. by	
Inspected by	
Approved	

20390
 PL 12



SHEET 2 of 3
 Plan of Land in
 WESTWOOD, MASS.
 Scale 1 inch = 50 feet
 Jan. 30, 1947
 E.W. Pilling
 Engineer

This survey conforms to Land Court Instructions
 Coordinates based on MIBD (destroyed)
 MIBE (destroyed)
 MIBF (extant)
 by connections to existing
 bounds

DECREE PLAN

Order
Treasurer filed
Attest
Drawn by
Math. by
Inspected by
Approved

20390
 PL 12

20390-3

20390-3



E685000

N444800

Sheet 3 of 3
 Plan of Land in
WESTWOOD, MASS.
 Scale 1 inch = 30 feet E.W. Pilling
 Jan. 30, 1947 Engineer

#20390-
PL12

DECREE PLAN	
Order
Traverse
Atlas
Drawn by
Math. by
Inspected by
Approved

Coord. based on MIBD (destroyed)
 MIBE (destroyed)
 MIBF (extant)
 by connections to existing bounds.

This survey conforms to Land Court
 Instructions *E.W. Pilling*

RECORDED
 FEB 14 1947