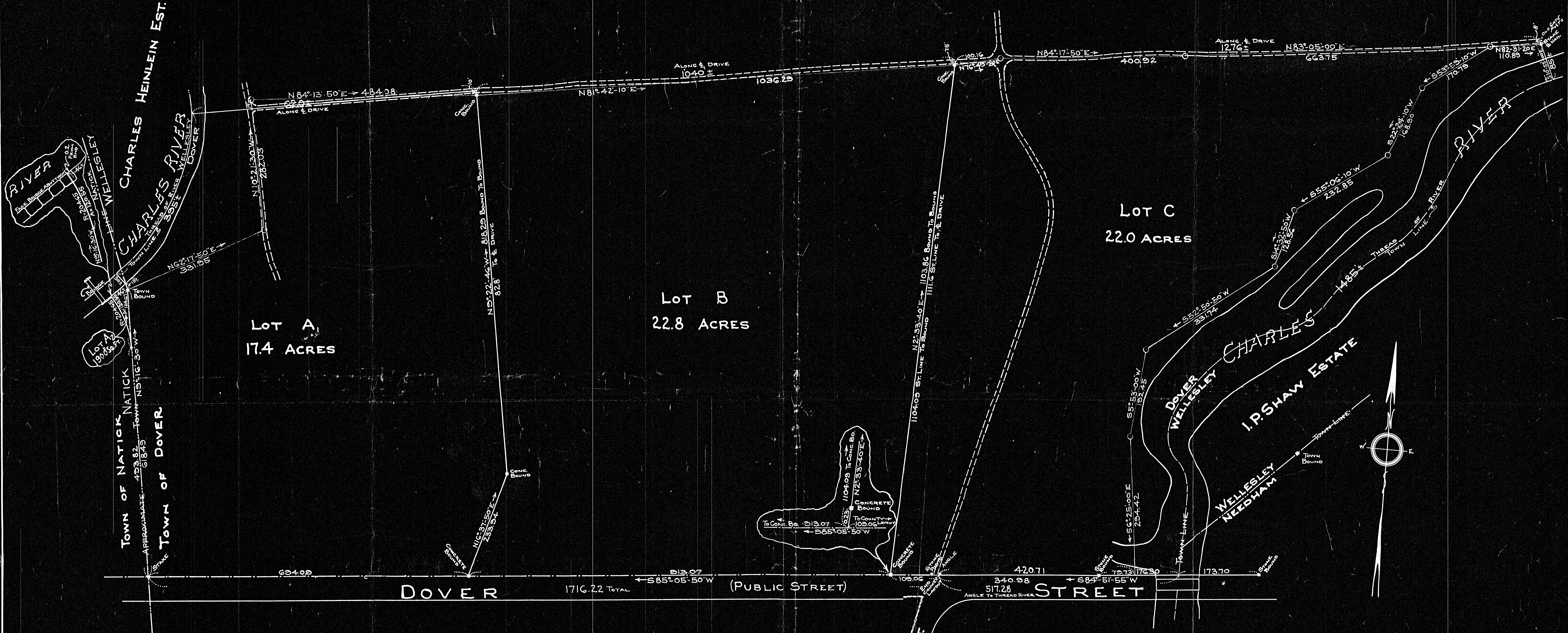


20044A

STIGMATINE FATHERS INC.



LOT A
17.4 ACRES

LOT B
22.8 ACRES

LOT C
22.0 ACRES

DISTANCE	BEARING	NORTH	SOUTH	EAST	WEST
614.49	N9°16'30"W	610.40			99.68
331.95	NG2°17'50"E	154.32		293.90	
282.03	N10°21'30"W	277.43			50.71
484.08	N84°13'50"E	48.66		481.63	
1036.29	N81°42'10"E	149.55		1025.44	
100.16	N7°49'20"E	228.3		97.52	
400.92	N84°17'50"E	39.84		398.94	
663.75	N83°05'00"E	79.93		658.92	
170.79	S53°59'10"W		100.42		138.15
168.90	S22°24'10"W		156.15		64.37
232.85	S55°06'10"W		133.22		190.98
128.56	S14°32'50"W		124.44		32.29
331.74	S52°50'50"W		200.35		264.41
192.45	S5°53'00"W		191.44		19.73
294.42	S6°25'00"E		292.58	32.90	
420.71	S84°51'55"W		37.66		419.02
1716.22	S85°05'50"W		146.68		1709.93
1382.96		1382.94	2989.25	2989.27	

I CERTIFY THAT THIS PLAN WAS MADE
IN ACCORDANCE WITH LAND COURT INSTRUCTIONS
JUNE 29, 1946
Elton O. Stiermas
CIVIL ENGINEER

LAND COURT
AUG 28 '46
FILED

20044
PL 34

ON PLAN

SUBDIVISION OF LAND
IN
NATICK AND DOVER, MASSACHUSETTS
TO BE CONVEYED BY
DARTMOUTH COLLEGE
SCALE 1IN=100FT. JUNE 1946
ROWLAND H. BARNES & CO. CIVIL ENGRS.
WALTHAM & NEWTON, MASS.

20044A

WG345