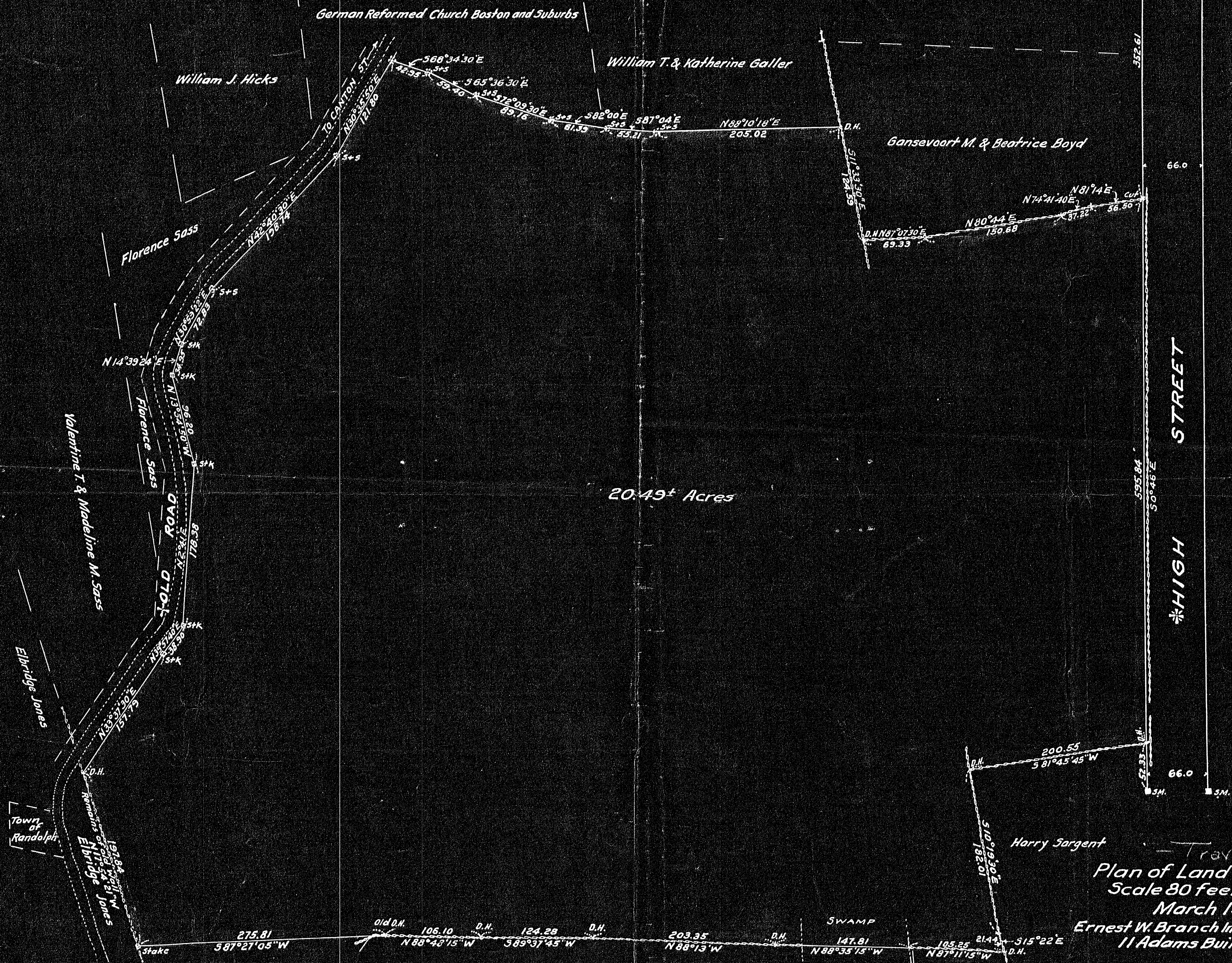


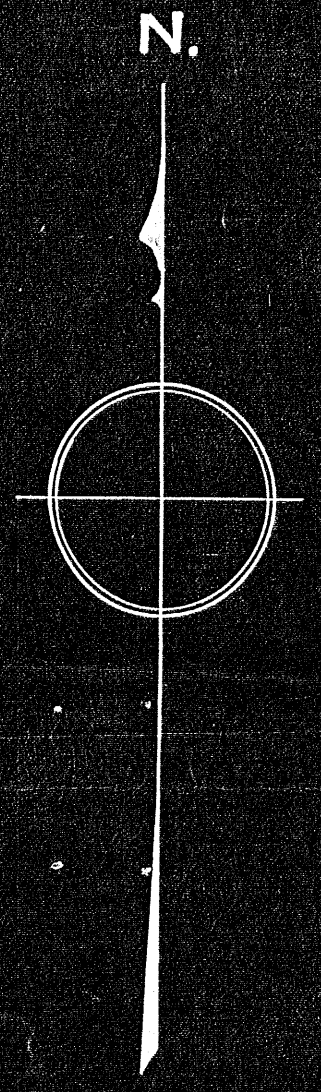
19959

19959



20.49± Acres

HIGH STREET



Plan of Land in Randolph
 Scale 80 feet to an inch
 March 19, 1946
 Ernest W. Branch Inc. Civil Engineers
 11 Adams Building, Quincy

I certify that this survey was made in accordance
 with Land Court instructions
 March 19, 1946 George H. Newcomb, Surveyor

19959
 Nov. 21

DEED PLAN
Order.....
Traverse filed.....
ADJ.....
Drawn by.....
Examined by.....
Inspected by.....
Approved.....

Robert & Anne L. Jensen

Harry Sargent

Elbridge Jones