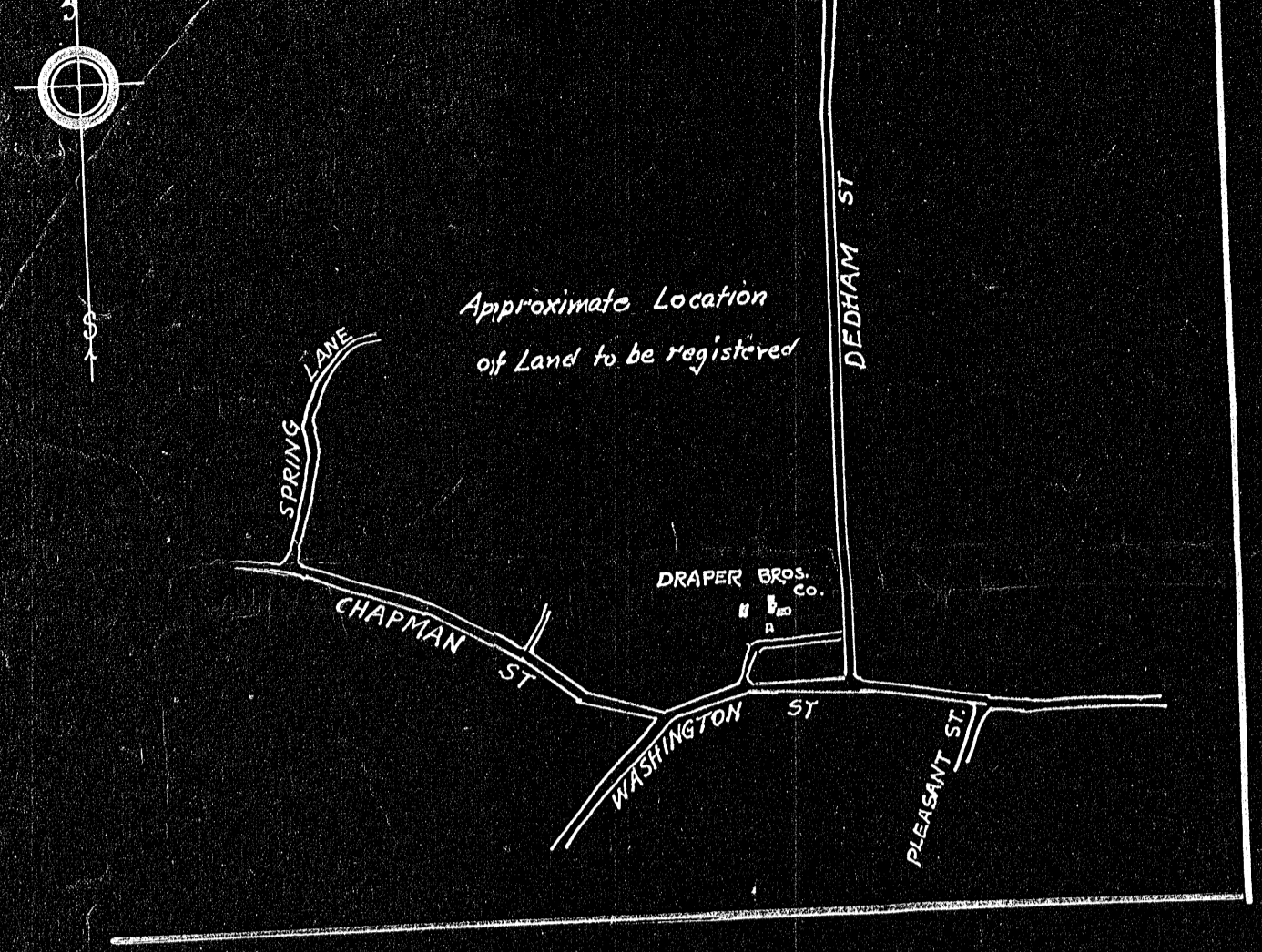


KEY MAP  
SCALE: Approximately 1000 Ft. to 1 Inch.



113.27± Acres

PLAN OF LAND IN  
**CANTON, MASS.**

JANUARY 2, 1945  
SCALE: 100 FT. TO 1 INCH

PROPERTY OF  
**BENJAMIN E. MORSE**  
Robert B. Bellamy, Civil Engineer  
25 Eldon St. Dorchester, Mass.

I certify that this plan was made in accordance with Land Court instructions  
Robert B. Bellamy, Surveyor

191261 19716A  
19716A  
19716A