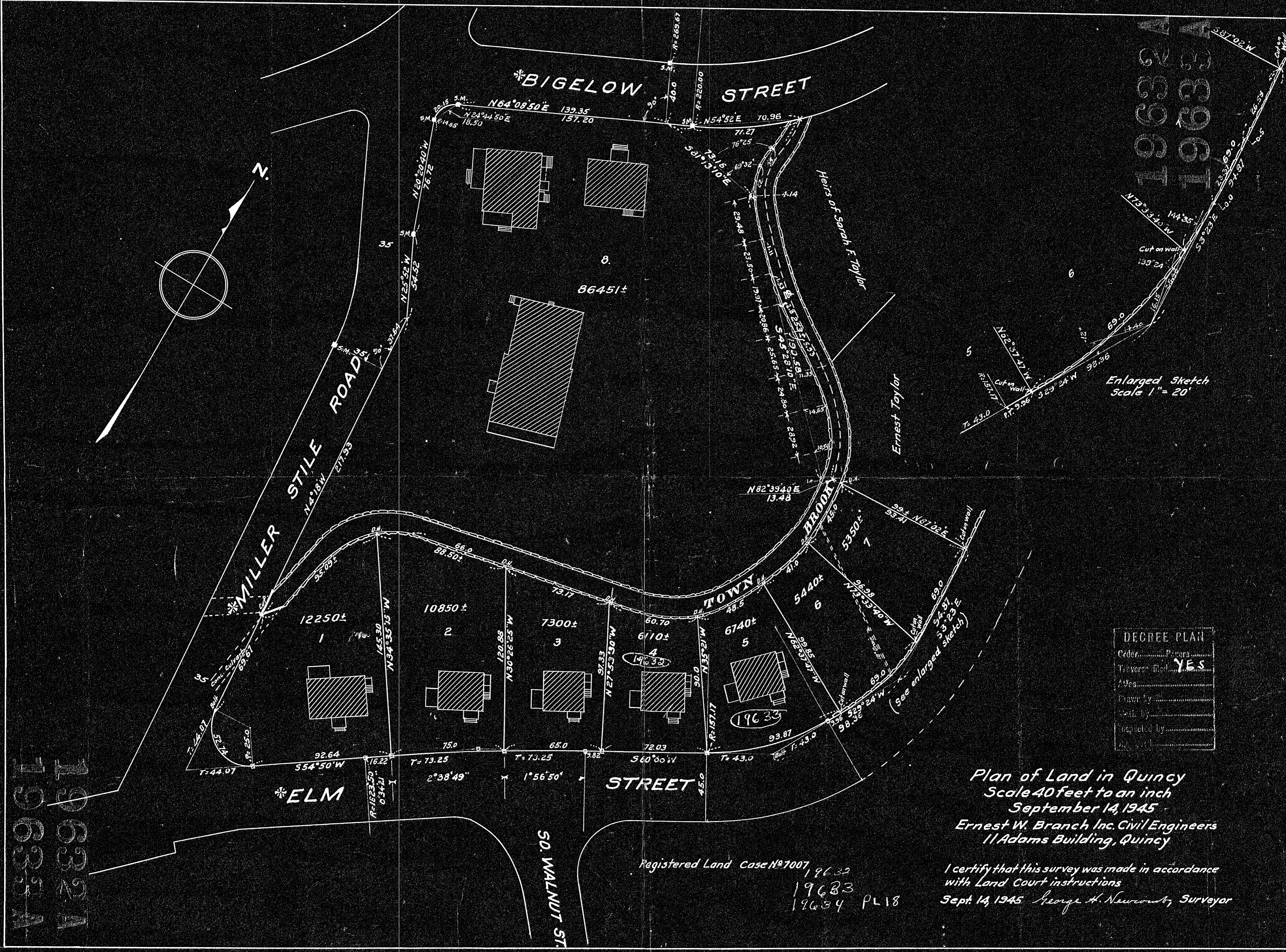


19634A  
19632A  
19631A

19634A



DEGREE PLAN	
Order	.....
Traverse	.....
Area	.....
Drawn by	.....
Checked by	.....
Inspected by	.....

Plan of Land in Quincy  
 Scale 40 feet to an inch  
 September 14, 1945  
 Ernest W. Branch Inc. Civil Engineers  
 11 Adams Building, Quincy

Registered Land Case No 7007  
 19632  
 19633  
 19634 PL18

I certify that this survey was made in accordance  
 with Land Court instructions  
 Sept. 14, 1945 George H. Newcomb, Surveyor