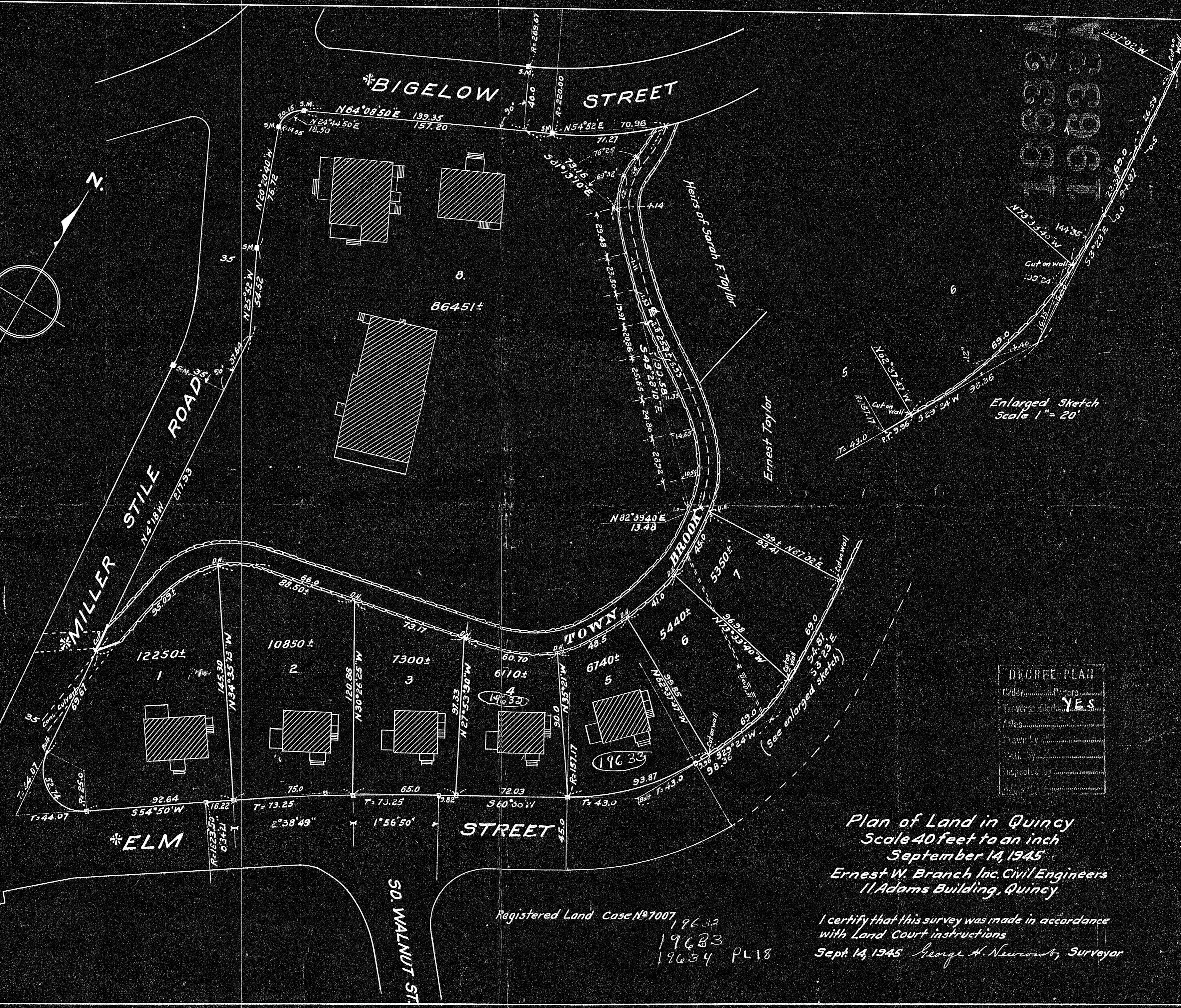
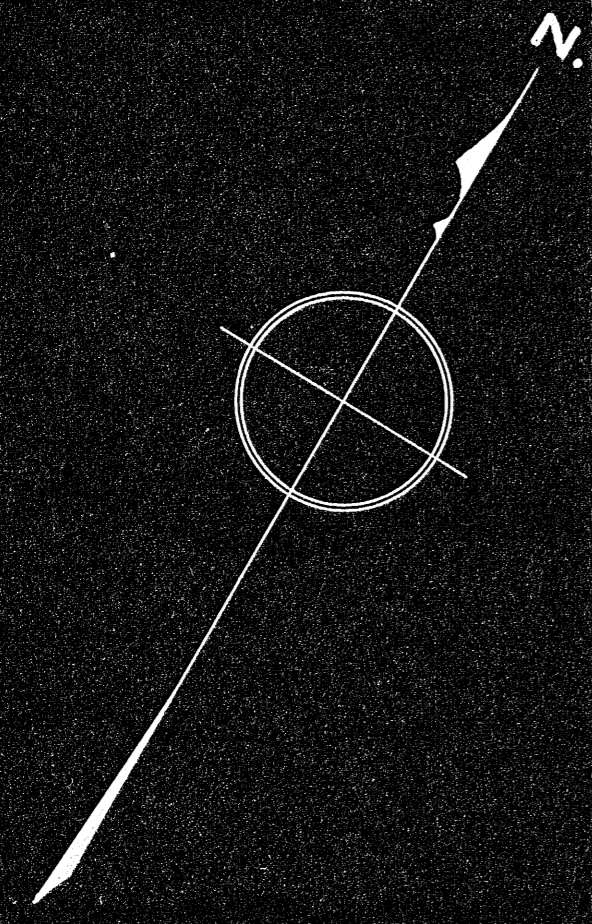


19634A
19632A
19633A

19634A



Enlarged Sketch
Scale 1" = 20'

DECREE PLAN	
Order	Placed
Traverse filed	YES
Wells	
Drawn by	
Inspected by	

Plan of Land in Quincy
 Scale 40 feet to an inch
 September 14, 1945
 Ernest W. Branch Inc. Civil Engineers
 11 Adams Building, Quincy

Registered Land Case No 7007
 19632
 19633
 19634 PL18

I certify that this survey was made in accordance
 with Land Court instructions
 Sept. 14, 1945 George H. Newcomb, Surveyor