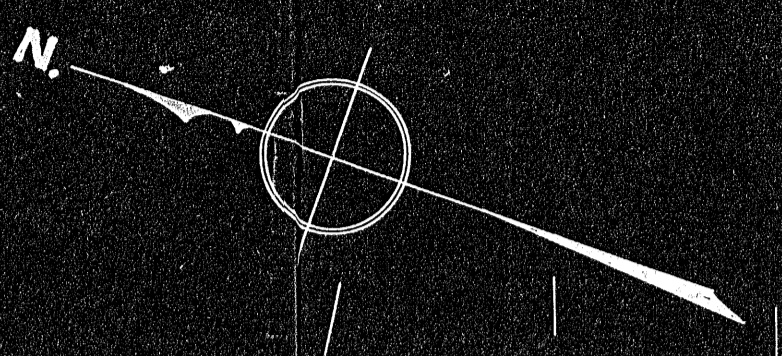


95144

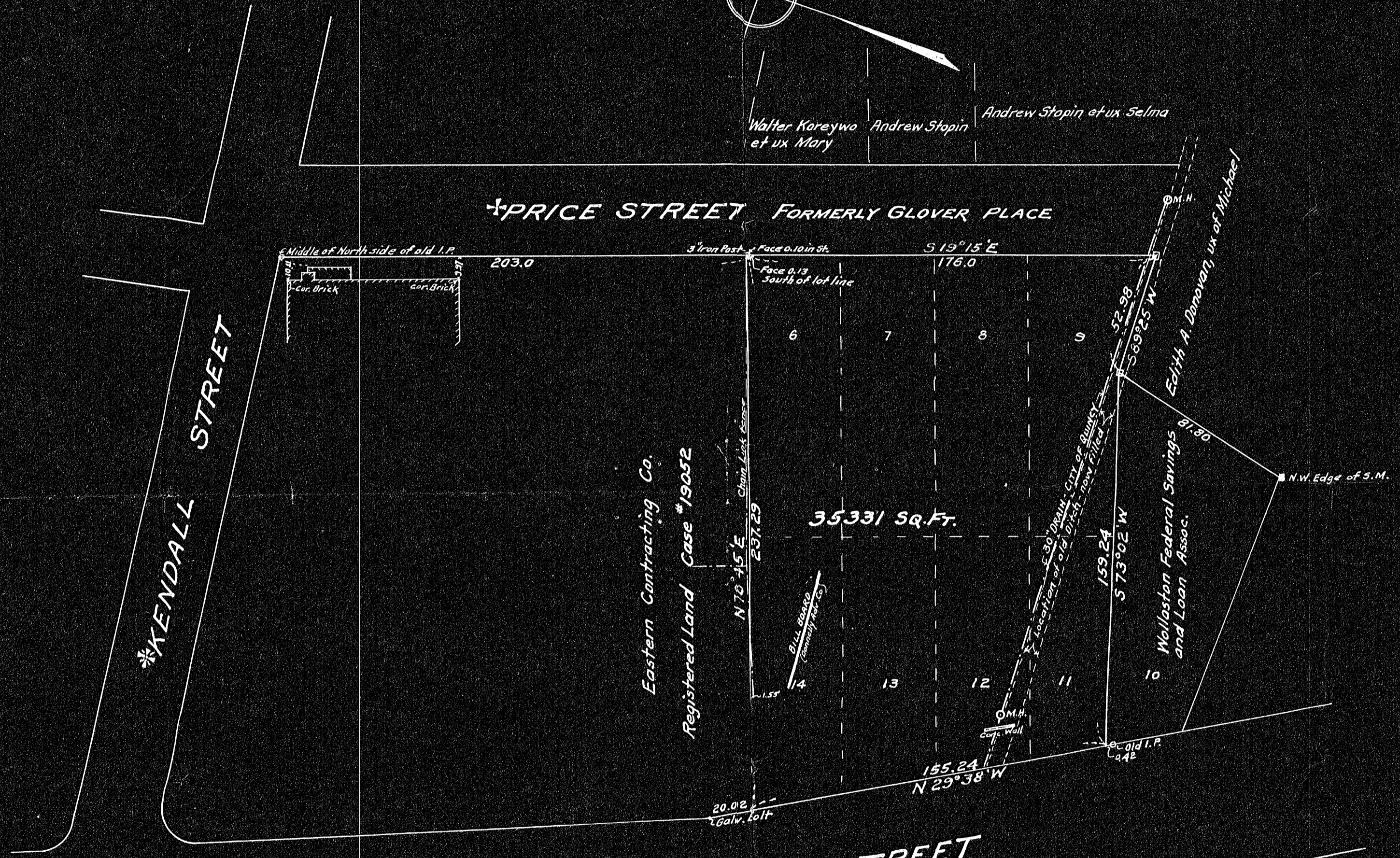


Walter Koreywo et ux Mary | Andrew Stopin | Andrew Stopin et ux Selma

\*PRICE STREET FORMERLY GLOVER PLACE

\*KENDALL STREET

\*HANCOCK STREET



35331 SQ. FT.

Eastern Contracting Co.  
Registered Land Case # 19052

Edith A. Donovan, ux of Michael  
Wollston Federal Savings and Loan Assoc.

BEARING	DISTANCE	SINE	COSINE	N	S	E	W
N 29° 38' W	155.24	49445	86921	134.94			76.16
N 70° 45' E	237.29	94409	32969	78.23		224.02	
S 19° 15' E	176.00	32969	94409		166.16	59.03	
S 89° 25' W	52.98	99995	01018		0.54	52.98	
S 73° 02' W	159.24	95647	29182		46.47	152.31	
				213.17	213.17	282.05	282.05

DEGREE PLAN  
 Traverse filed **YES**  
 Drawn by  
 Checked by

Plan of Land in Quincy  
 Scale 40 feet to an inch  
 August 21, 1945  
 Ernest W. Branch <sup>Inc</sup> Civil Engineers  
 11 Adams Building, Quincy

I certify that this survey was made in accordance  
 with Land Court instructions  
 Aug. 21, 1945 George H. Newcomb, Surveyor.

#19514  
 PLS

CR