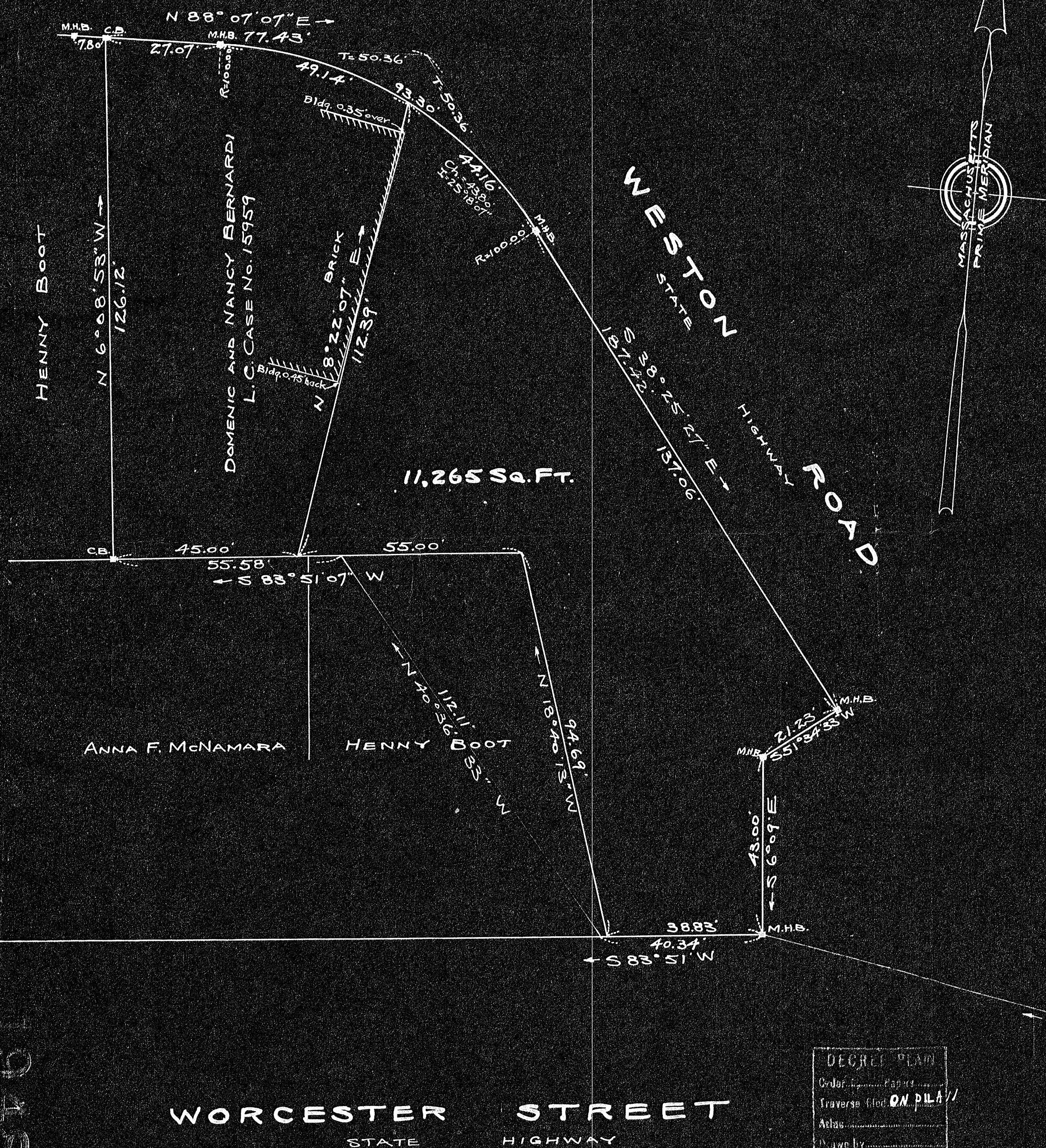


AMHERST AVENUE  
STATE HIGHWAY

PLAN OF LAND  
IN  
**WELLESLEY**  
SCALE 20 FEET TO AN INCH  
JULY 10, 1945  
GLEASON ENGINEERING COMPANY



INT. ANGLE	BEARING	DISTANCE	N	S	E	W
126°52'34"	S38°25'27"E	137.06		146.83	116.48	
90°00'00"	S51°34'33"W	21.73		13.19		16.63
73°43'33"	S 6°09'00"E	43.00		42.75	4.61	
90°00'00"	S88°51'00"W	40.34		4.32		40.11
124°27'53"	N40°36'33"W	112.11	85.11			72.97
235°32'20"	S83°51'07"W	55.58		5.95		55.26
90°00'00"	N 6°08'53"W	126.12	125.39			13.51
85°44'00"	N88°07'07"E	77.43		2.54		77.39
108°00'00"		663.23	213.04	213.04	198.48	198.48

DEGREE PLAN  
Order Paper  
Traverse file ON PL 11  
Atlas  
Drawn by  
Sect. by  
Inspected by  
Approved

#19488

U.S.C.&G.L.C.S. STA. M9BH { 876.79 } U.S.C.&G.L.C.S. STA. M9BJ

We certify that this survey was made in accordance with Land Court instructions. July 10, 1945 Gleason Engineering Co. Surveyors.

18976

18976