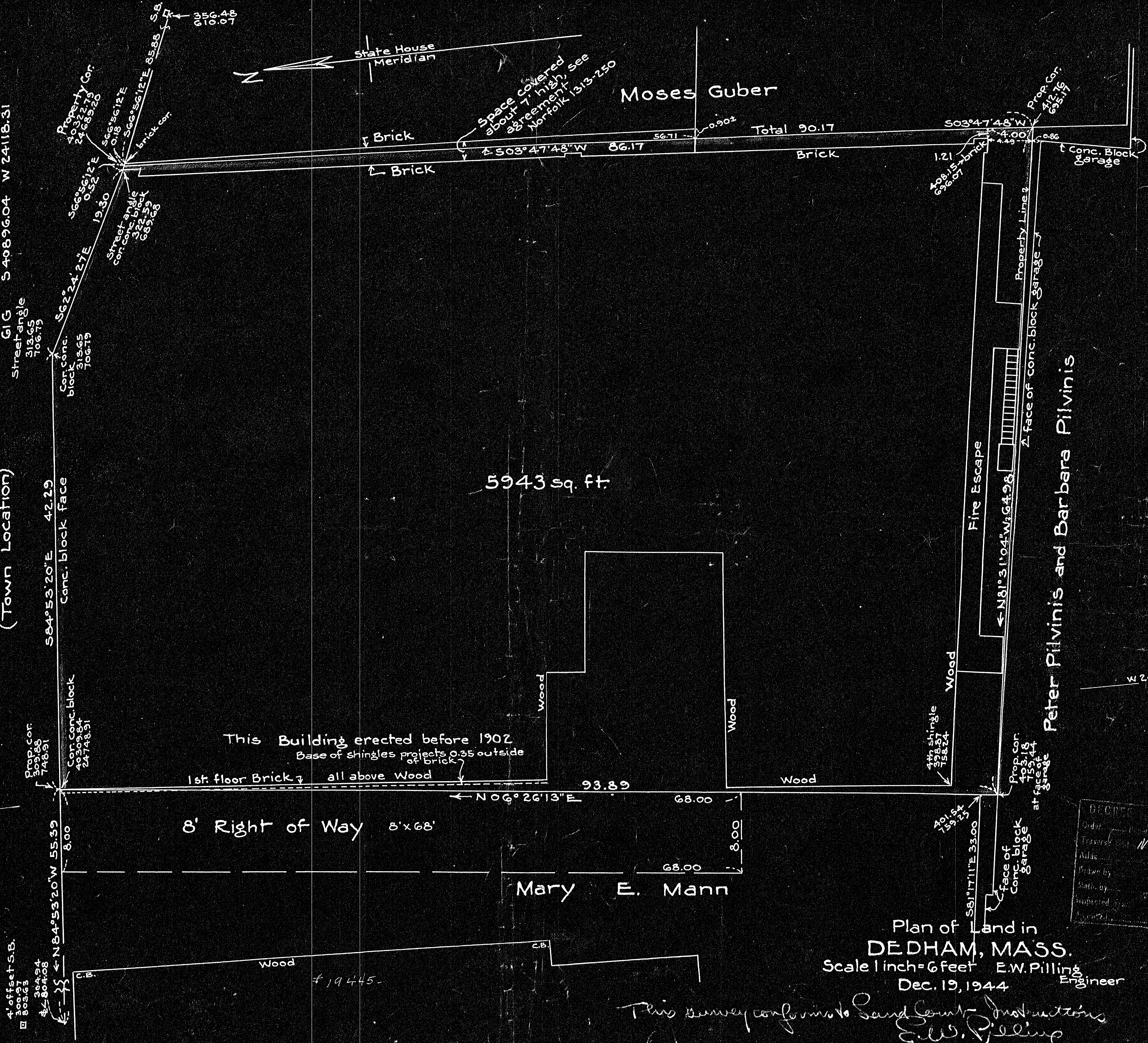


194451

194451

"State House" Coord. based on
 G1 F S 40090.87 W 26185.66
 G1 F1 S 40303.42 W 24656.81
 G1 E S 40064.09 W 27076.45
 G1 G S 49896.04 W 24118.31

HIGH ST.
 (Town Location)



W 24750
 S 34300

4' offset S.B.
 300.97
 803.63
 304.24
 804.08

N 84° 53' 20" W 55.39
 8.00

Prop. Cor.
 509.28
 746.51
 Cor. Conc. block
 43209.84
 24748.31

S 84° 53' 20" E 42.29
 Conc. block face

Street angle
 312.65
 106.79

Property Cor.
 10322.79
 24685.20
 S 66° 56' 12" E 19.30
 S 66° 56' 12" E 0.52
 S 66° 56' 12" E 0.18
 S 66° 56' 12" E 85.88
 S.B.
 0356.48
 010.07

8' Right of Way 8'x68'

Mary E. Mann

5943 sq. ft.

This Building erected before 1902
 Base of shingles projects 0.35 outside of brick
 1st floor Brick all above Wood

Moses Guber

State House Meridian

Space covered about 7' high, see agreement, see Norfolk 1313-250

Brick
 S 03° 47' 48" W 86.17
 56.71
 0.90±
 Total 90.17
 Brick

S 03° 47' 48" W 4.00
 4.49
 1.21
 108.15
 696.07
 Prop. Cor.
 216.15
 655.15

Fire Escape

Wood

4 1/2" shingle
 158.27
 158.24

Prop. Cor.
 403.18
 759.44
 at face of garage

face of conc. block garage

Peter Pilvinis and Barbara Pilvinis

DECEMBER 1944
 Order of the Board of Assessors
 Traversed and Measured
 by
 E. W. Pilling
 Engineer

Plan of Land in
 DEDHAM, MASS.
 Scale 1 inch = 6 feet E.W. Pilling
 Dec. 19, 1944 Engineer

This survey conforms to said Govt. Instructions
 E.W. Pilling