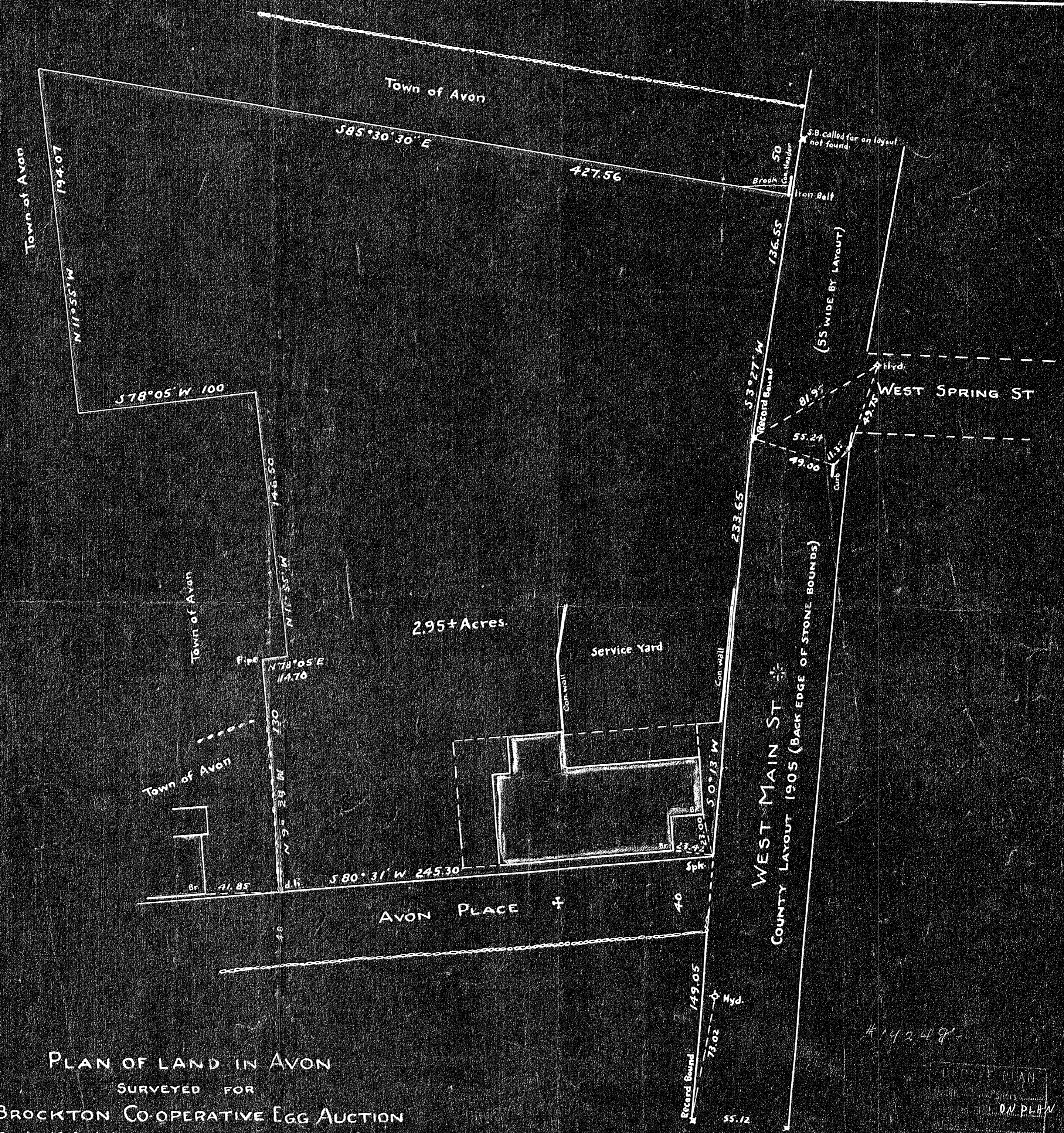
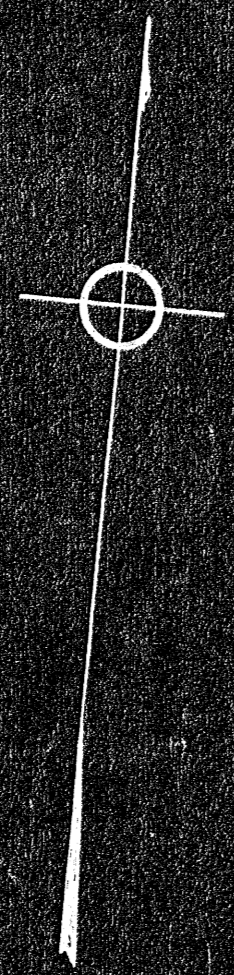


| Bearing         | Dist   | N      | S      | E      | W      |
|-----------------|--------|--------|--------|--------|--------|
| S 85° 30' 30" E | 427.56 |        | 33.49  | 426.25 |        |
| S 3° 27' W      | 136.55 |        | 136.30 |        | 8.22   |
| S 0° 13' W      | 233.65 |        | 233.65 |        | 0.88   |
| S 80° 31' W     | 245.30 |        | 40.42  |        | 241.95 |
| N 9° 29' W      | 130.00 | 128.22 |        |        | 21.42  |
| N 78° 05' E     | 14.70  | 3.04   |        | 14.38  |        |
| N 11° 55' W     | 146.50 | 143.34 |        |        | 30.25  |
| S 78° 05' W     | 100.00 |        | 20.65  |        | 97.85  |
| N 11° 55' W     | 194.07 | 189.89 |        |        | 40.07  |
|                 |        | 464.49 | 464.51 | 440.63 | 440.64 |



PLAN OF LAND IN AVON  
 SURVEYED FOR  
 BROCKTON CO-OPERATIVE EGG AUCTION  
 Scale 40 feet to an inch February 1, 1944  
 Hayward & Hayward Surveyors, Brockton, Mass.

#14248

PROPERTY PLAN  
 BROCKTON CO-OPERATIVE EGG AUCTION  
 D.W. PLANN