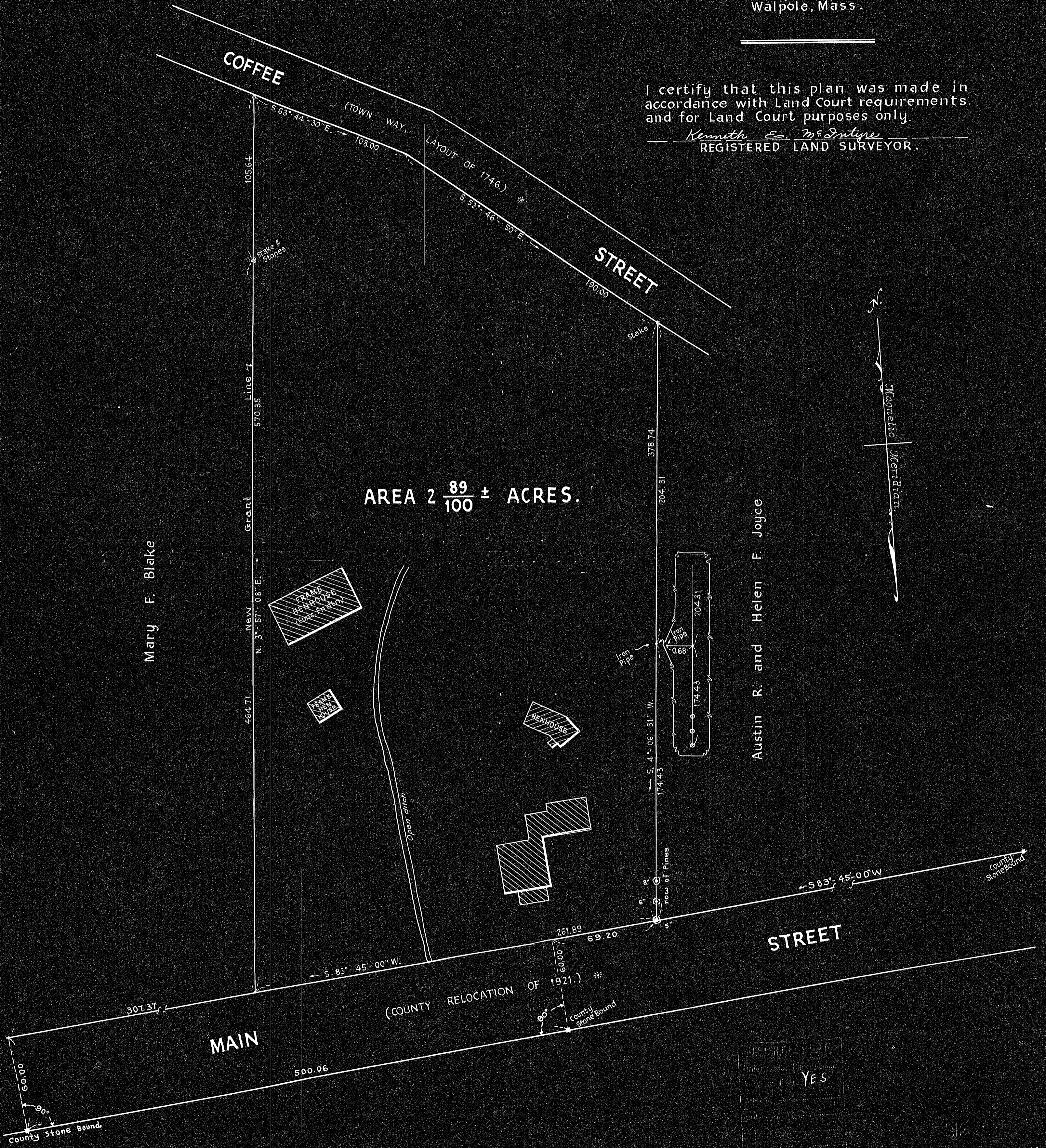


Plan of Land
in
MEDWAY, MASS.

Scale: 1 inch = 40 feet. January 22, 1944.
Kenneth E. McIntyre, Civil Engineer;
Walpole, Mass.

I certify that this plan was made in
accordance with Land Court requirements
and for Land Court purposes only.

Kenneth E. McIntyre
REGISTERED LAND SURVEYOR.



AREA 2 $\frac{89}{100}$ ± ACRES.

Mary F. Blake

Austin R. and Helen F. Joyce

RECORDED PLAN	
Order of Survey	
Filed	YES
Accepted	
By	
Date	

19005
PL 38

19005A