

18920A

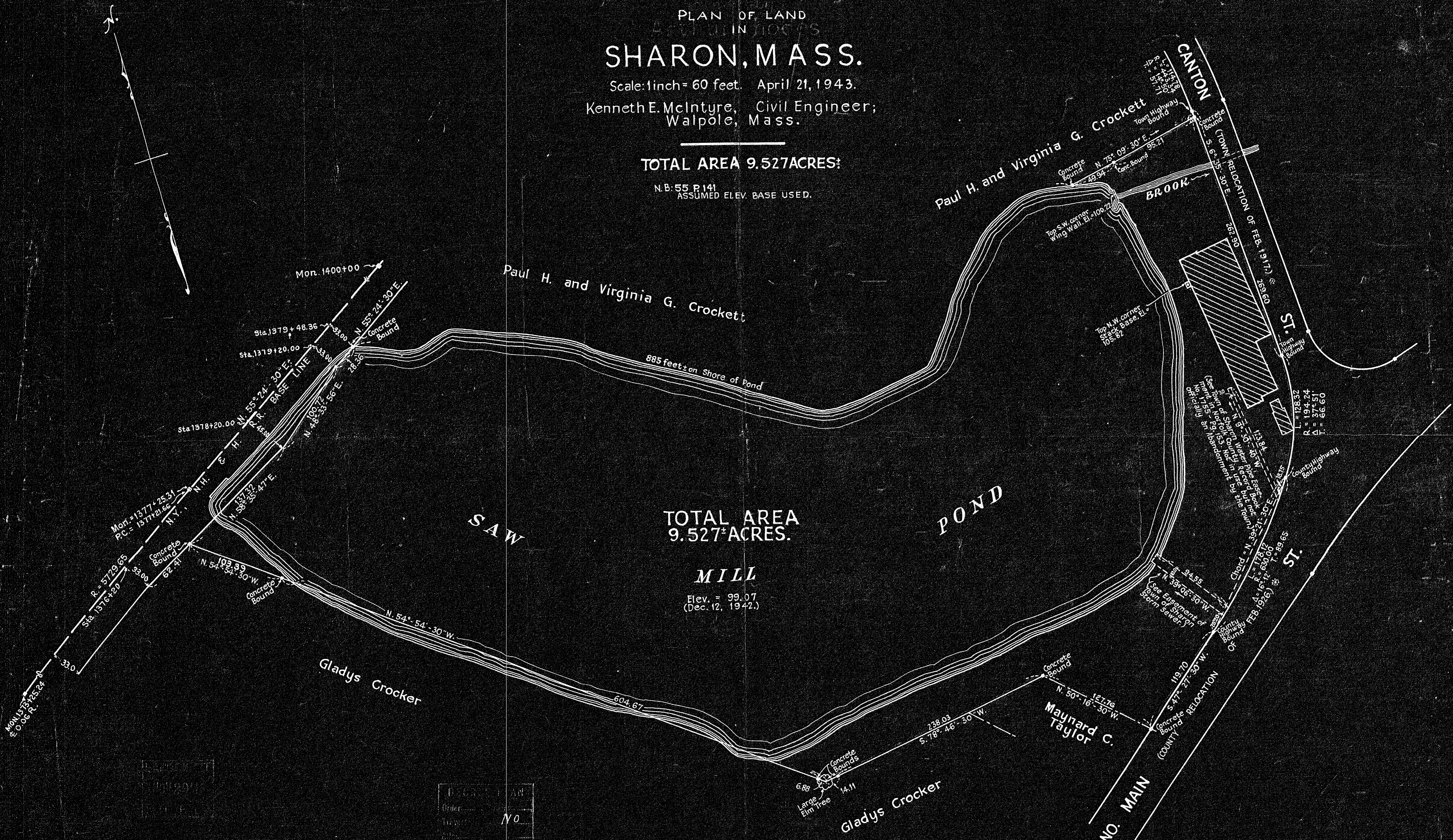
# PLAN OF LAND SHARON, MASS.

Scale: 1 inch = 60 feet. April 21, 1943.

Kenneth E. McIntyre, Civil Engineer;  
Walpole, Mass.

**TOTAL AREA 9.527 ACRES:**

N.B. 55 P. 141  
ASSUMED ELEV. BASE USED.



**TOTAL AREA  
9.527<sup>±</sup> ACRES.**

**MILL**

Elev. = 99.07  
(Dec. 12, 1942.)

I certify that this plan was made in  
accordance with Land Court requirements.

*Kenneth E. McIntyre*  
REGISTERED LAND SURVEYOR.

# 18920

Order	NO
Drawn	
Map	

# 18920  
PL 46