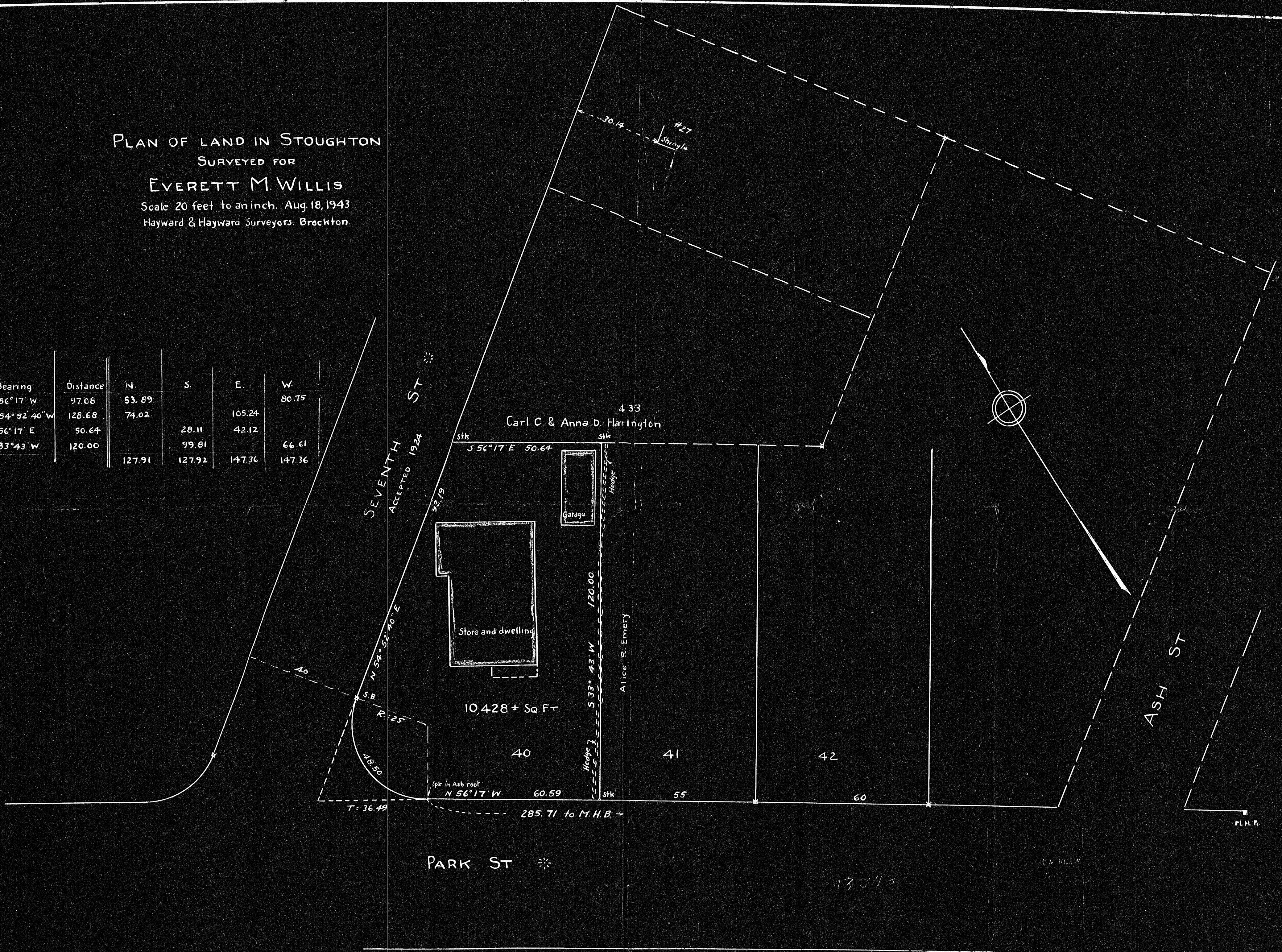


PLAN OF LAND IN STOUGHTON  
 SURVEYED FOR  
 EVERETT M. WILLIS  
 Scale 20 feet to an inch. Aug. 18, 1943  
 Hayward & Hayward Surveyors. Brockton.

Bearing	Distance	N.	S.	E.	W.
N 56° 17' W	97.08	53.89			80.75
N 54° 52' 40" W	128.68	74.02		105.24	
S 56° 17' E	50.64		28.11	42.12	
S 33° 43' W	120.00		99.81		66.61
		127.91	127.92	147.36	147.36



18343

We certify that this survey was made in accordance with Land Court instructions. Aug. 18, 1943. Hayward & Hayward. Surveyors.