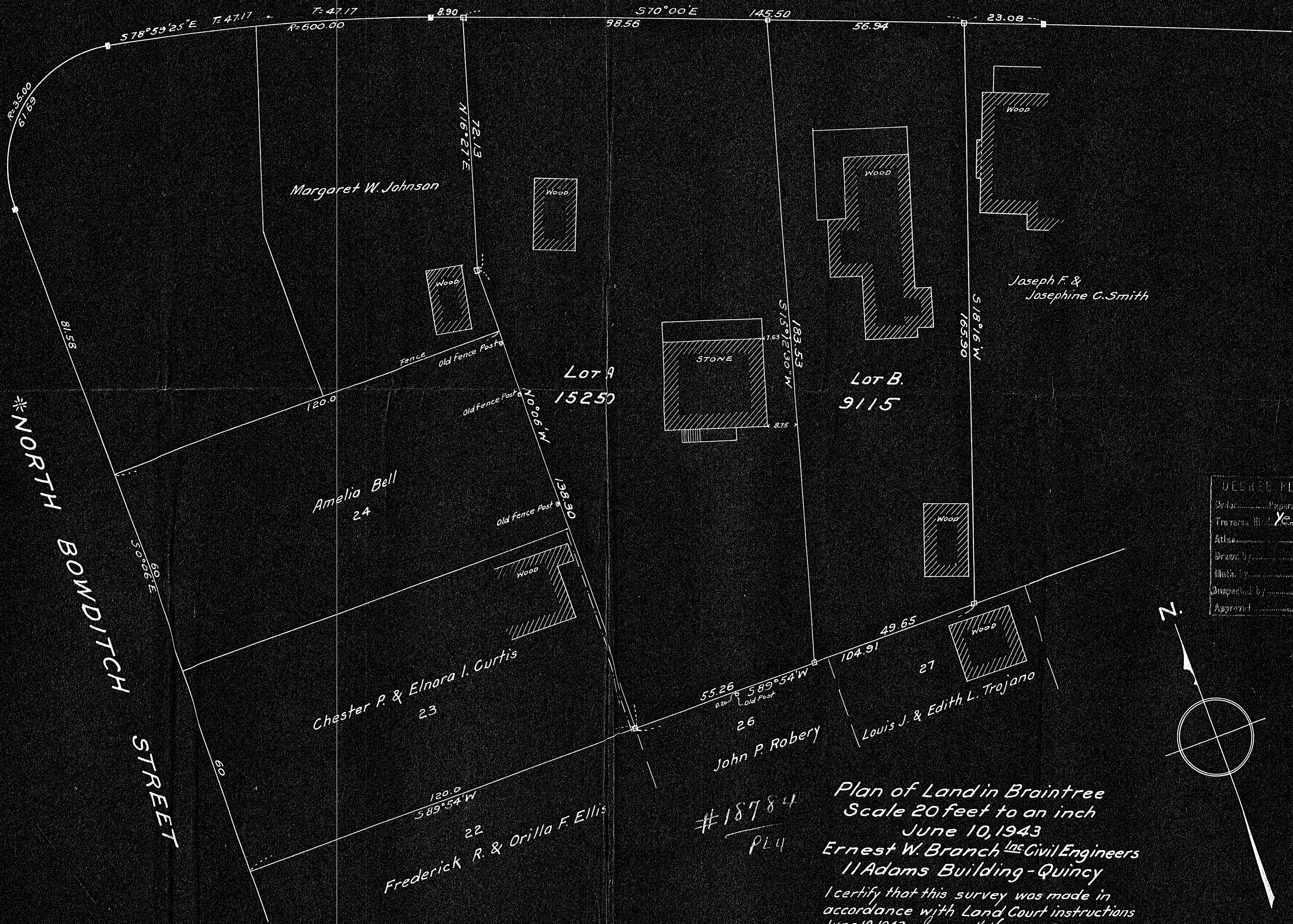


HAYWARD STREET



NORTH BOWDITCH STREET

DEED PLAN	
Deed	.....
Traverse	..... Yes
Atlas	.....
Survey	.....
Map	.....
Approved	.....

#18784  
PL4

Plan of Land in Braintree  
Scale 20 feet to an inch  
June 10, 1943  
Ernest W. Branch <sup>INC</sup> Civil Engineers  
11 Adams Building - Quincy  
I certify that this survey was made in  
accordance with Land Court instructions  
June 10, 1943 George H. Newcomb, Surveyor.