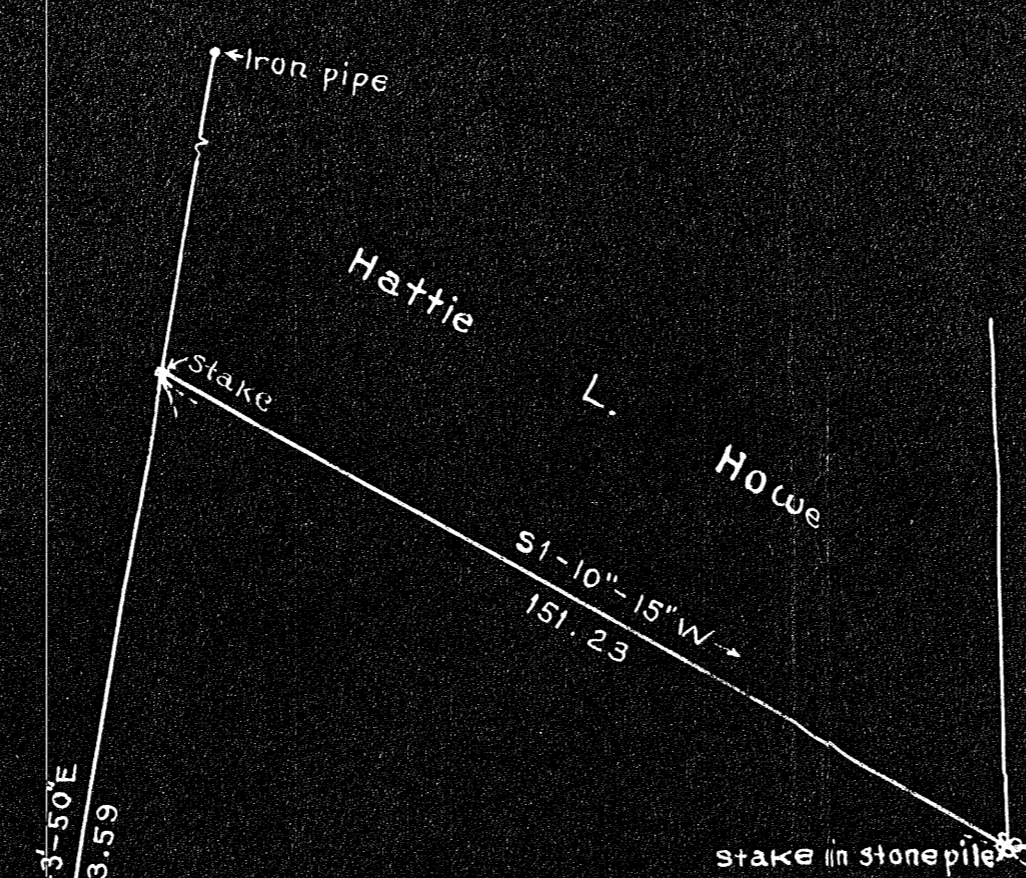
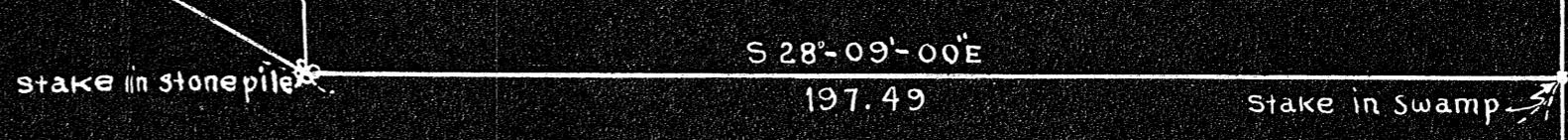


I certify that this plan was made in accordance with Land Court Requirements
Kenneth E. McIntyre

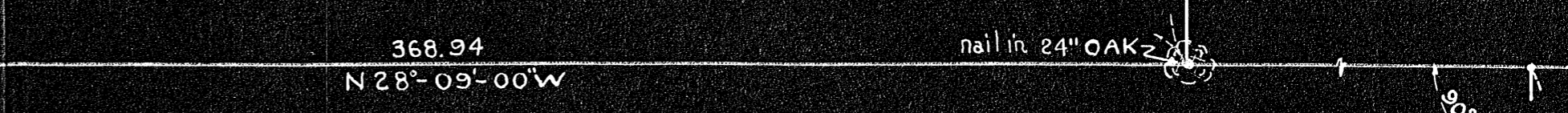
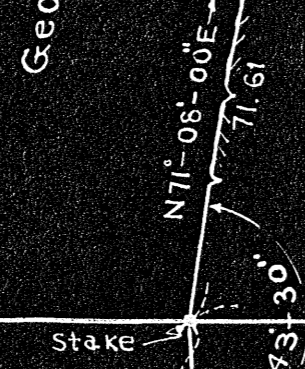
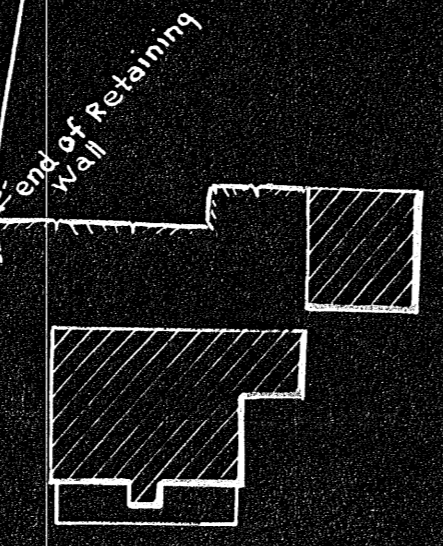
George A. Brown
Mabel C. Brown



Charles A. Belcher ET AL



AREA = 61,156 SQ. Ft. ±



COUNTY STREET
Laid out by the County Commissioners June 27, 1876

BELCHER COURT

BELCHER COURT

PLAN OF LAND
in
FOXBOROUGH MASS,

Scale 1 in = 30 Feet Dec. 9, 1942
Kenneth E. McIntyre C.E.
WALPOLE MASS.

18667

Yes

