

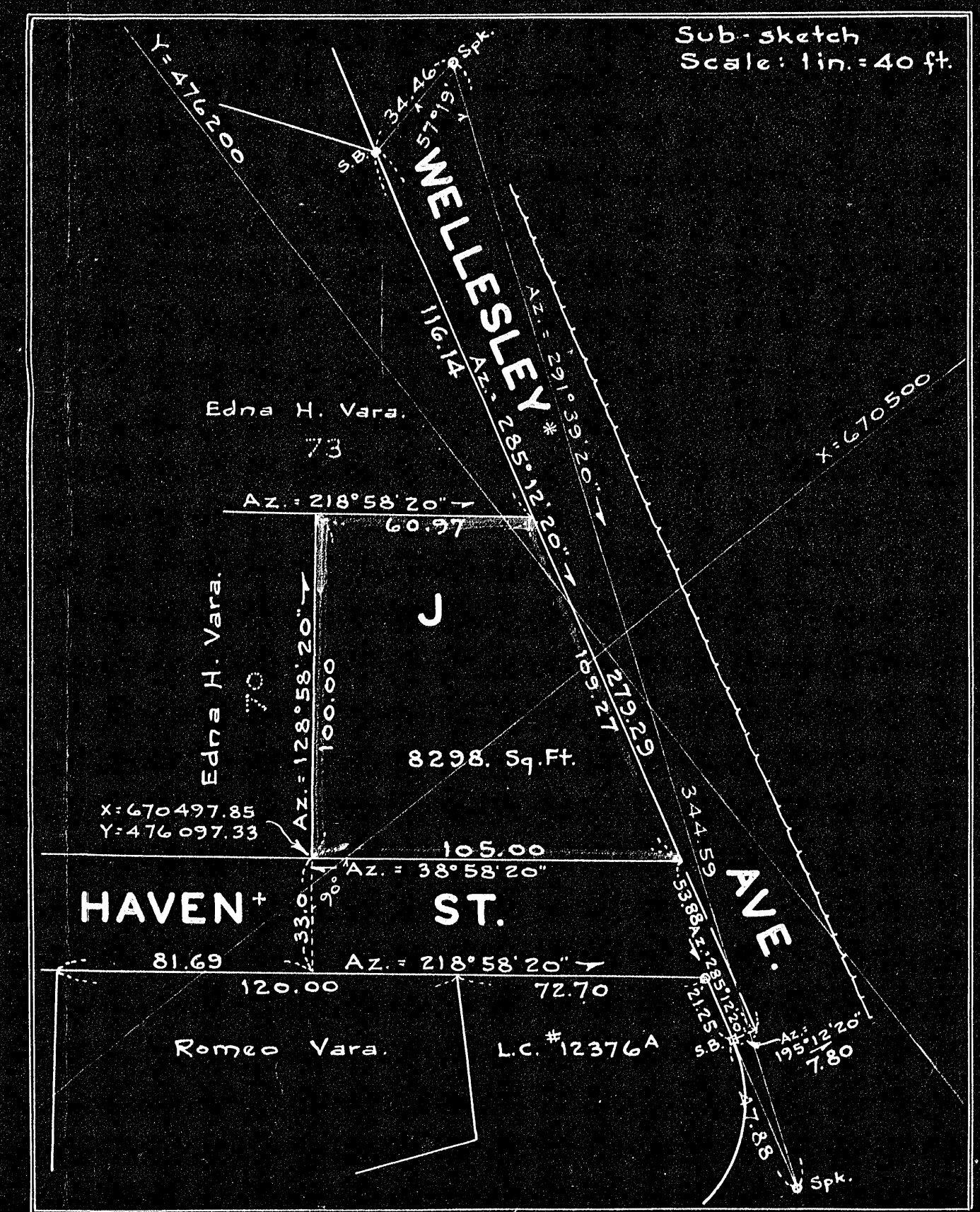
Transit Line Traverse.						X	Y	Point
Bearing	Dist.	N.	S.	E.	W.			
S 57°11'55"W	480.81		382.99		290.69	670491.71	475746.49	Nail
N 56°20'10"W	198.29	109.92			165.04	670201.02	475363.50	Nail
N 39°16'20"E	164.71	127.51		104.26		670140.24	475600.93	Stk.
N 38°40'50"E	199.89	154.04		124.93		670265.17	475756.97	Stk.
N 38°44'20"E	314.13	245.02		196.57		670461.74	476001.99	Stk.
N 39°16'50"E	207.85	160.89		131.59		670593.33	476162.88	Stk.
S 74°47'40"E	69.13		18.13	66.71		670660.04	476144.75	Spk.
S 02°52'35"E	129.05		128.89	6.48		670666.52	476015.86	S.B.
S 32°58'55"W	321.12		269.37		174.81	670491.71	475746.49	Nail
	799.38	799.38	630.54	630.54				

Property Line Traverse.						X	Y	Point
Bearing	Dist.	N.	S.	E.	W.			
S 51°01'40"E	132.95		83.62	103.36		670472.13	476013.06	-
S 31°41'33"W	197.30		167.88	103.65		670471.84	475761.56	S.B.
S 37°12'21"W	377.99		301.06	228.56		670243.28	475460.50	-
N 51°01'40"W	84.62	53.22		65.79		670177.49	475513.72	-
S 38°58'20"W	98.01		76.20	61.64		670115.85	475437.52	-
N 66°48'34"W	88.33	34.78		81.19		670034.66	475472.30	-
N 38°58'20"E	695.56	540.76		437.47		670472.13	476013.06	-
	628.76	628.76	540.83	540.83				

Lot J - Property Lines.						X	Y	Point
Bearing	Dist.	N.	S.	E.	W.			
S 38°58'20"W	105.00		81.63	66.04		670543.89	476178.96	-
N 51°01'40"W	100.00	62.89		77.75		670420.10	476160.22	-
N 38°58'20"E	60.97	47.40		38.35		670438.45	476207.62	-
S 74°47'40"E	109.27		28.66	105.44		670563.89	476178.96	-
	110.29	110.29	143.79	143.79				

The following street names changed:  
 Crane St. was formerly Charles St.  
 Haven St. was formerly Heath St.  
 Holden St. was formerly Hill St.  
 Change made by Board of Survey, Dec. 20, 1939.

Note: Lot numbers shown thus -70- refer to numbers as shown on the Highland Park subdivision plan.



Plan of Land in  
**NEEDHAM, MASS.**  
 Scale: 1 in. = 40 ft. Frank L. Cheney,  
 Civil Engineer,  
 Needham, Mass.  
 Aug. 20, 1942.  
 Additions Sept. 2, 1942.

I certify that this survey was made in accordance with Land Court Instructions.  
 Frank L. Cheney,  
 Civil Engineer.

NOV 18 1942  
 FILE

Order  
 on plan

100325