

Plan of Property

IN

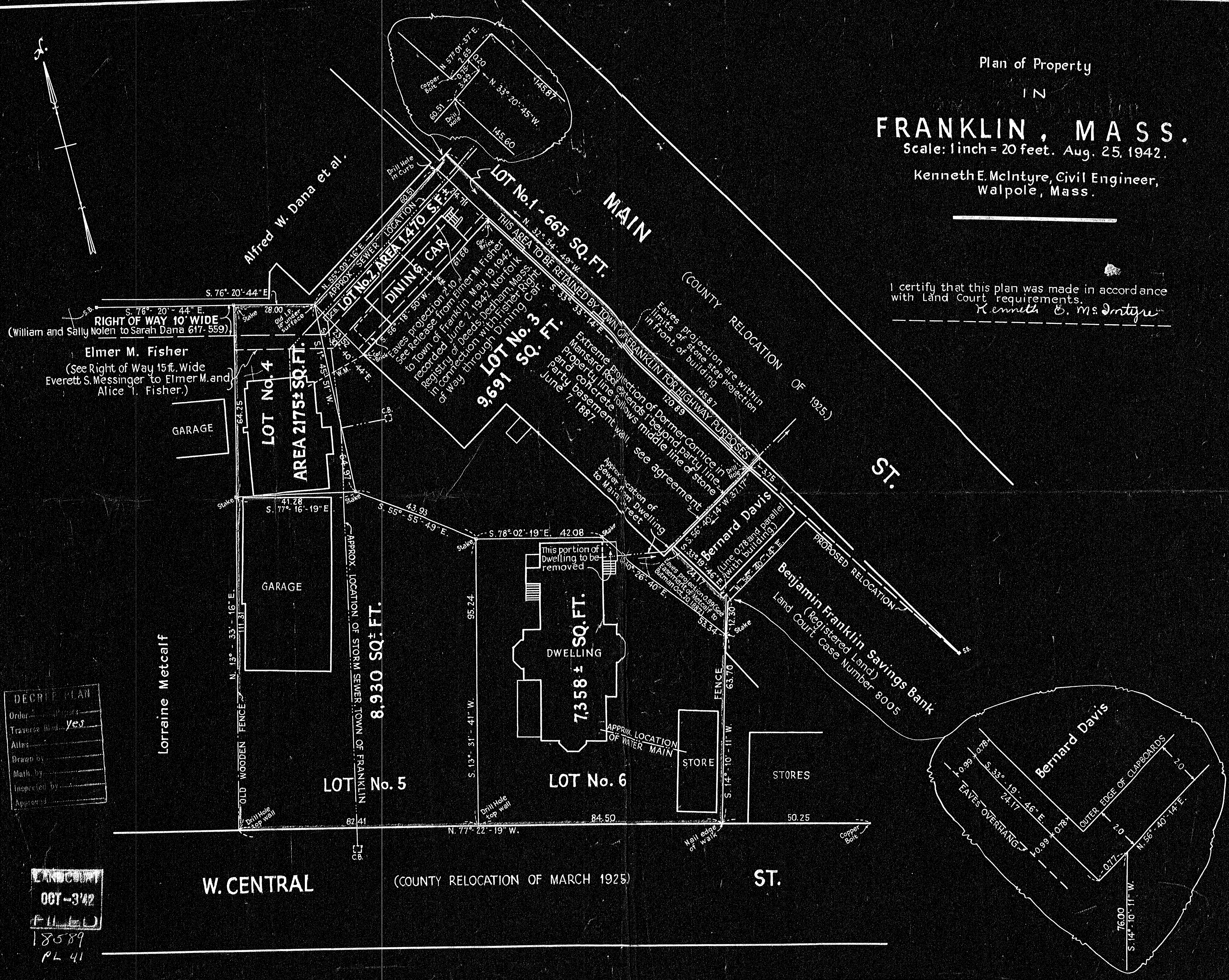
# FRANKLIN, MASS.

Scale: 1 inch = 20 feet. Aug. 25, 1942.

Kenneth E. McIntyre, Civil Engineer,  
Walpole, Mass.

I certify that this plan was made in accordance  
with Land Court requirements.

*Kenneth E. McIntyre*



RIGHT OF WAY 10' WIDE  
(William and Sally Nolen to Sarah Dana 617-559)  
Elmer M. Fisher  
(See Right of Way 15 ft. Wide  
Everett S. Messinger to Elmer M. and  
Alice I. Fisher.)

DECRIP PLAN  
Order: \_\_\_\_\_  
Traverse filed: Yes  
Aides: \_\_\_\_\_  
Drawn by: \_\_\_\_\_  
Math by: \_\_\_\_\_  
Inspected by: \_\_\_\_\_  
Approved: \_\_\_\_\_

LAND COURT  
OCT-342  
FILED  
18589  
PL 41

169981