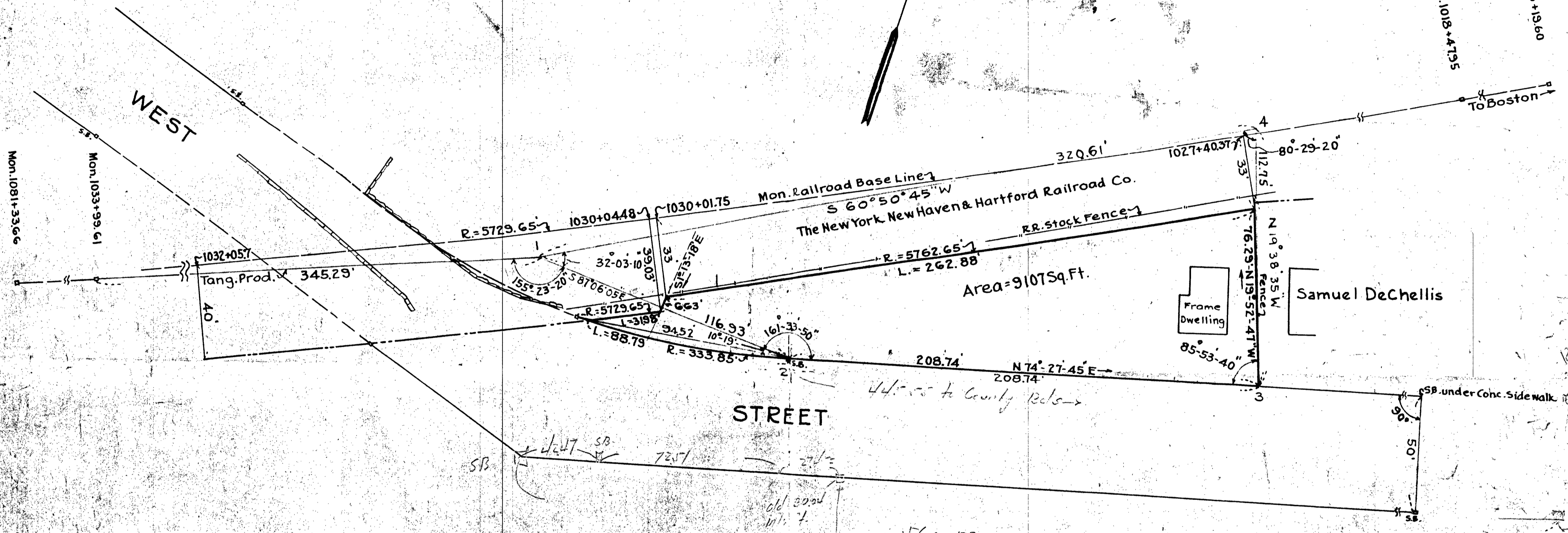


18569A

Mon. 959+19.60

Mon. 1018+47.95

To Boston



Mon. 1081+33.66

Mon. 1033+99.61

Tang. Prod. 345.29'

40'

R=5729.65'

1030+04.48

1030+01.75

Mon. Railroad Base Line  
S 60°50'45" W

The New York New Haven & Hartford Railroad Co.  
RR. Stock Fence

R=5762.65'

L=262.88'

Area=91075 Sq. Ft.

R=5729.65'

L=88.79'

R=333.85'

L=116.93'

L=161.33'

208.74'

N 74°27'45" E

Frame Dwelling

Samuel DeChellis

N 19°38'35" W

76.29'-N 19°52'47" W

85°53'40"

STREET

44.50 to County Reels

SSB. under Conc. Sidewalk

DECREE PLAN	
Order.....	Papers
Traverse filed.....	Yes
Atlas.....	
Drawn by.....	
Made by.....	
Inspected by.....	
Approved.....	

PLAN OF LAND  
IN  
WALPOLE, MASS.  
SCALE 1 IN. = 30 FT. JULY 18, 1942  
A.W. Thompson Engineer



18569  
PL 43

I hereby certify that this plan is made in accordance  
with Land Court Instructions  
A.W. Thompson  
Norwood, Mass.

18569A