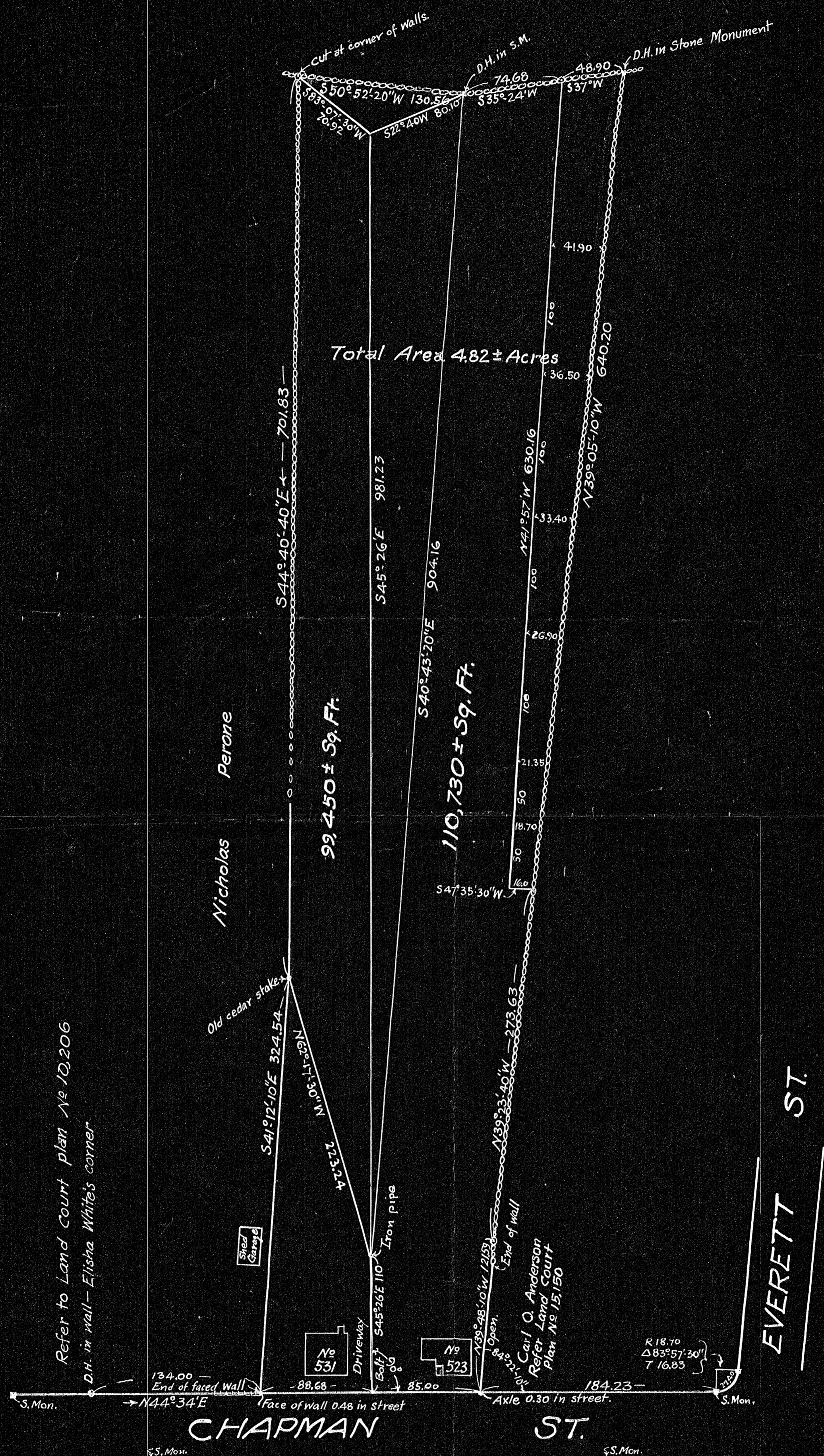


18482



Refer to Land Court plan No. 10,206
 D.H. in wall - Elisha White's corner

Nicholas Perone

EVERETT ST.

CHAPMAN ST.

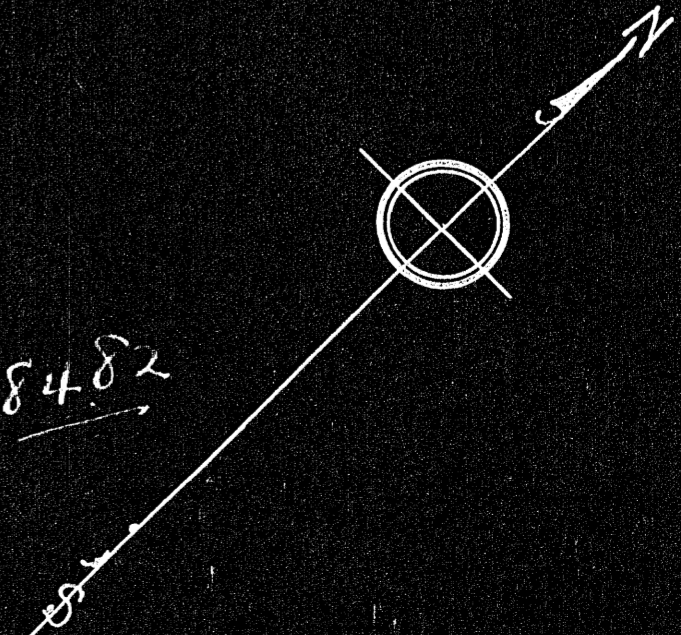
DECREE PLAN	
Order
Traverse	Yes
Atlas
Map
App

PLAN OF LOTS
 NOS. 523 AND 531 CHAPMAN ST.
 CANTON, MASS.

PROPERTY OF
 MARY F. LYONS
 MAY 9, 1942

SCALE: 60 FEET TO 1 INCH.
 Robert B. Bellamy, Civil Engineer
 25 Eldon St. Dorchester, Mass.

I certify that this plan was made
 according to LAND COURT instructions
 Robert B. Bellamy
 Surveyor.



#18482

18482A