

Scale 20 feet to an inch

Sketch

Case #478

Case #478

Case #478

Parcel B
569793 (TOTAL)

HOWARD

ST.

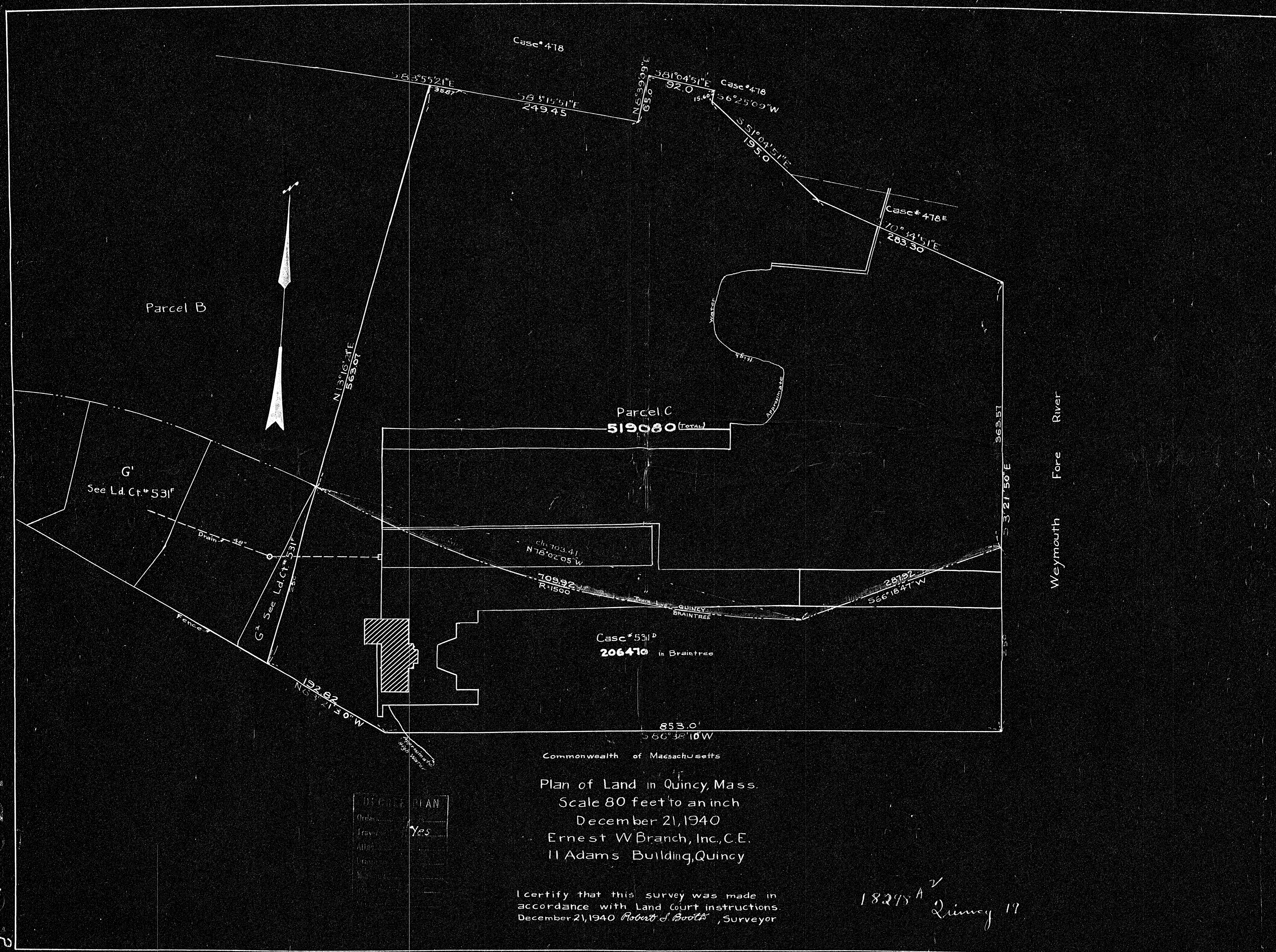
EAST

Plan of Land in Braintree and Quincy, Mass.
 Scale 80 feet to an inch
 December 21, 1940
 Ernest W. Branch, Inc., C.E.
 11 Adams Building, Quincy

I certify that this survey was made in accordance with Land Court instructions December 21, 1940 Robert S. Smith Surveyor.



19298



Parcel B

Parcel C
519080 (TOTAL)

G'
See Ld. Ct. #531F

Case #531P
206470 in Braintree

Weymouth Fore River

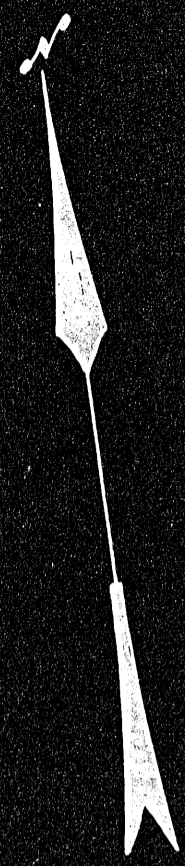
Commonwealth of Massachusetts

Plan of Land in Quincy, Mass.
 Scale 80 feet to an inch
 December 21, 1940
 Ernest W Branch, Inc., C.E.
 11 Adams Building, Quincy

I certify that this survey was made in accordance with Land Court instructions December 21, 1940 Robert S. Booth, Surveyor

18295A
 Quincy 19

DEGREE PLAN	
Order	Yes
Travel	Yes
Align	
Level	
Measure	
Compute	
Check	



WINTER ST.

85 FE Nail in Macadam Surface
34.33 53.18 d.h. in Grap. B.l.
47.12



Joseph F. Kellell

Mary Dan

Abraham Abdallah

Parcel G
93,494

Francis A. Newcomb

L.C. 18293

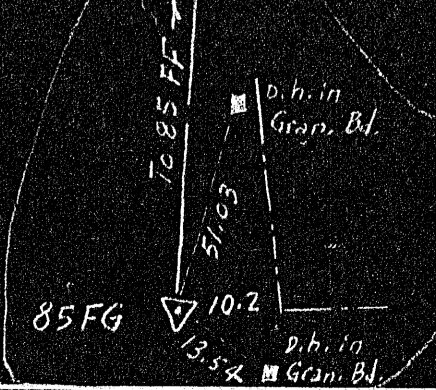
Helen A and
Francis A. Newcomb

Bessie L. McManus
Case #6812

Plan of Land in Quincy, Mass.
Scale 30 feet to an Inch
November 29, 1940
Ernest W. Branch, Inc. C.E.
11 Adams Building, Quincy

CHECK PLAN	
Order
Traverse
Atlas
Drawn by
W. M. B.
Inspected by

18298 A
Quincy P117



I certify that this survey was made in accordance with Land Court instructions.
November 29, 1940 Robert S. North, Surveyor

18298 A

18298 A

182081 4

EAST

HOWARD

ST.

SOUTH ST.
N75°52'09"E

Parcel H
50,730 ±

See Ld. Ct. #3231

N57°05'51"W
622.1

N32°27'09"E
70.0

N35°12'09"E
123.19

T=111.1

154.12

N51°52'51"E
172.20

203.4

38.28

Thread of Stream

113.48

36.5
212.93

Bethlehem Steel Co.
W56°36'50"W
114.38

See Ld. Ct. #478

153.0
W66°23'05"W

97

111

68°45'
65°41'
52°06'

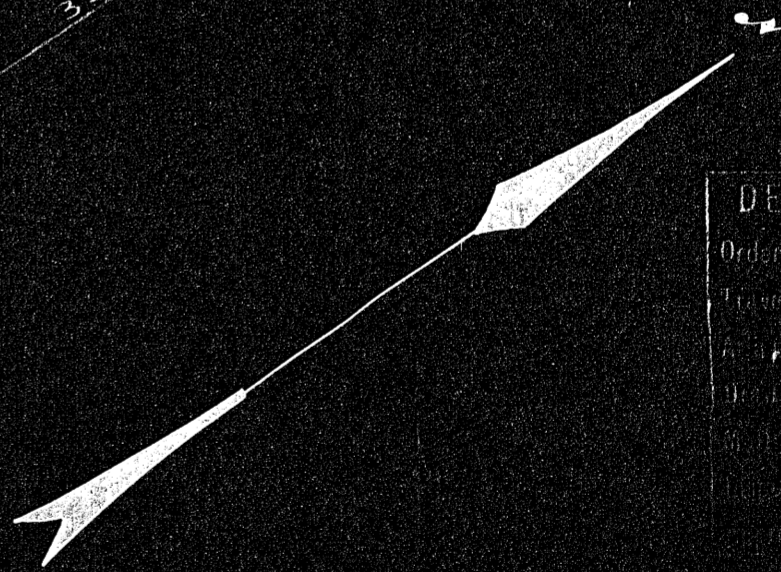
32.2

26.2

33.5
133.90

See Ld. Ct. #478
N95°30'32.5"
42
52°21'51"E

Bethlehem Steel Co.



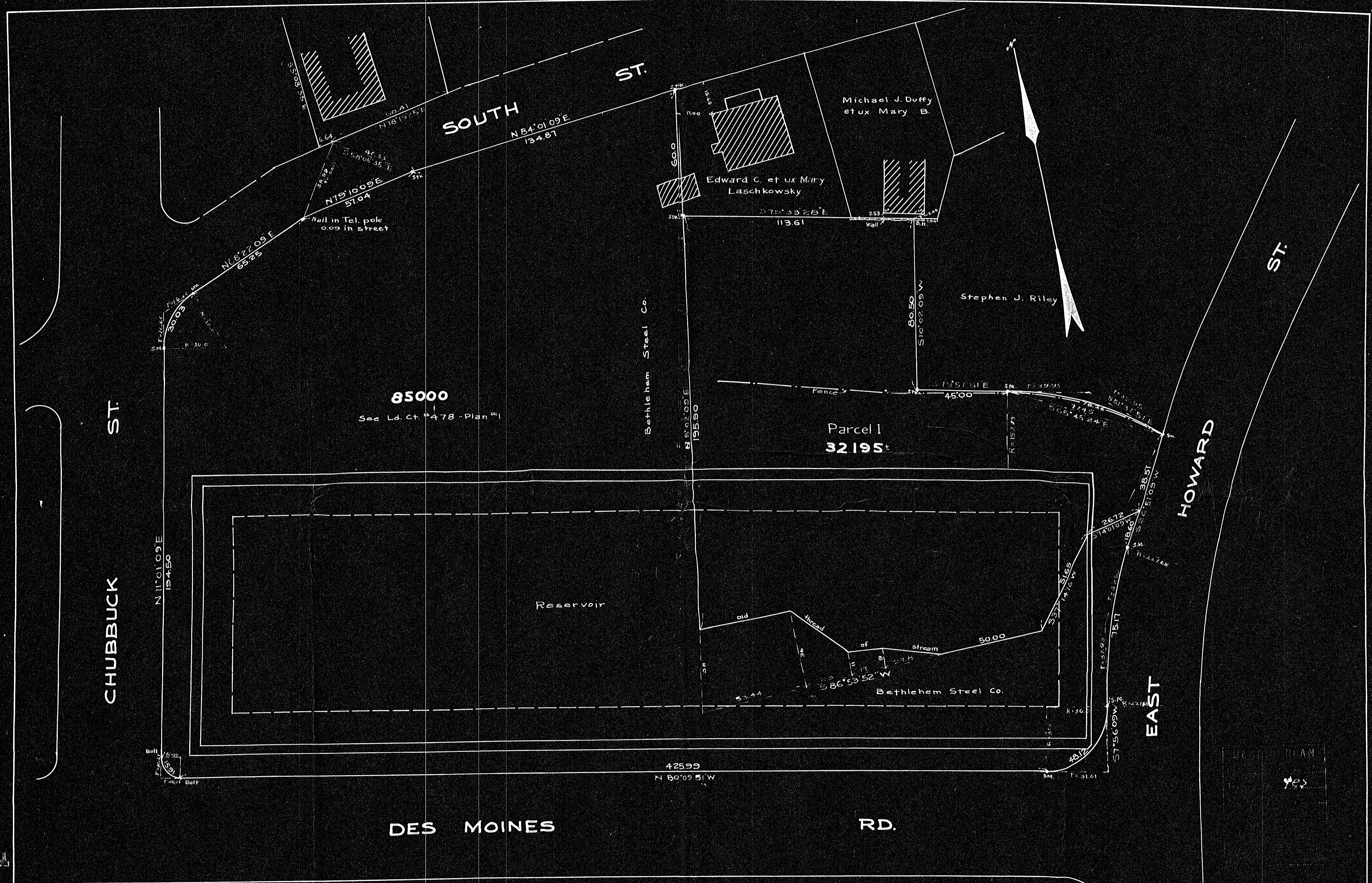
DECREE PLAN	
Order of Survey	Yes
Case No.	
Date of Survey	
Surveyor	
City	
County	
State	

Plan of Land in Quincy, Mass.
Scale 20 feet to an inch
December 13, 1940
Ernest W. Branch, Inc., C.E.
11 Adams Building, Quincy

I certify that this survey was made in accordance with Land Court instructions. December 13, 1940 Robert S. Booth, Surveyor.

182081 A 4
Quincy PL 19

182081



Plan of Land in Quincy, Mass.
 Scale 30 feet to an inch
 November 23, 1940
 Ernest W Branch, Inc., C.E.
 11 Adams Building, Quincy

I certify that this survey was made in accordance with Land Court instructions November 23, 1940 Robert J. Seabolt, Surveyor

13023

1000

5

18298A

9

PLAN 6 OF 6

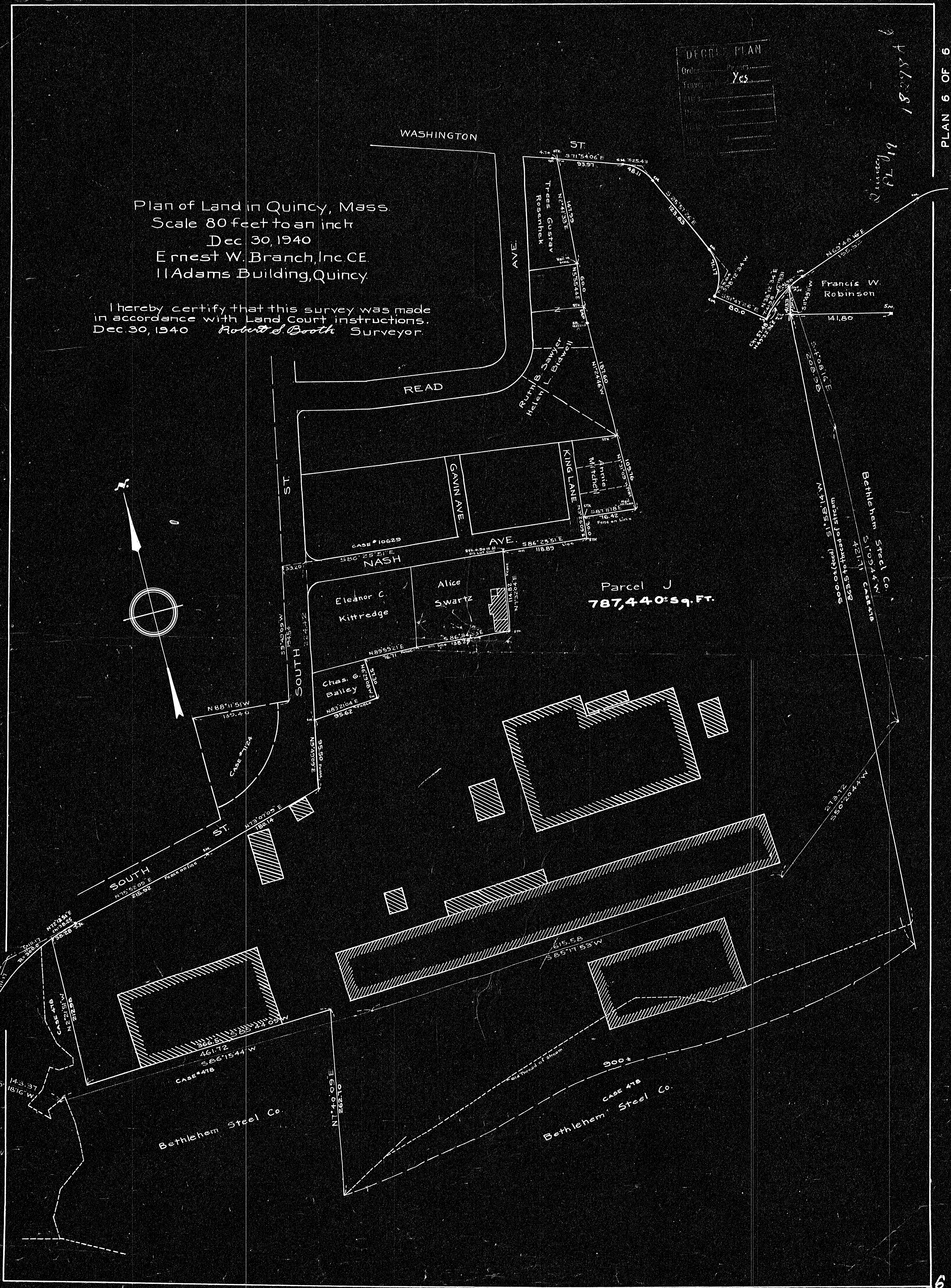
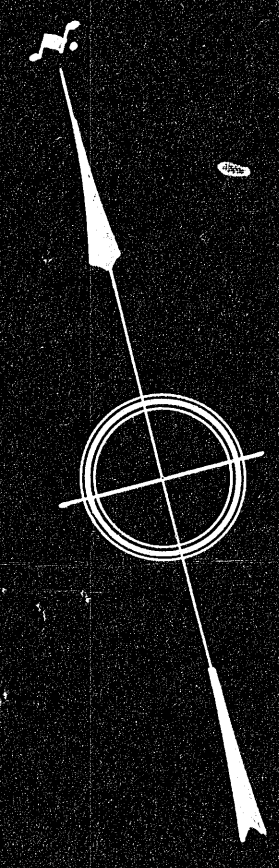
Plan of Land in Quincy, Mass.
 Scale 80 feet to an inch
 Dec 30, 1940
 Ernest W. Branch, Inc. CE.
 11 Adams Building, Quincy.

I hereby certify that this survey was made
 in accordance with Land Court instructions.
 Dec. 30, 1940 *Robert S. Booth* Surveyor.

DECLARATION

Created	Yes
Traverse	Yes
Area	
Volume	
Witness	
Signature	

Quincy PL 019 18298A



18298A

6