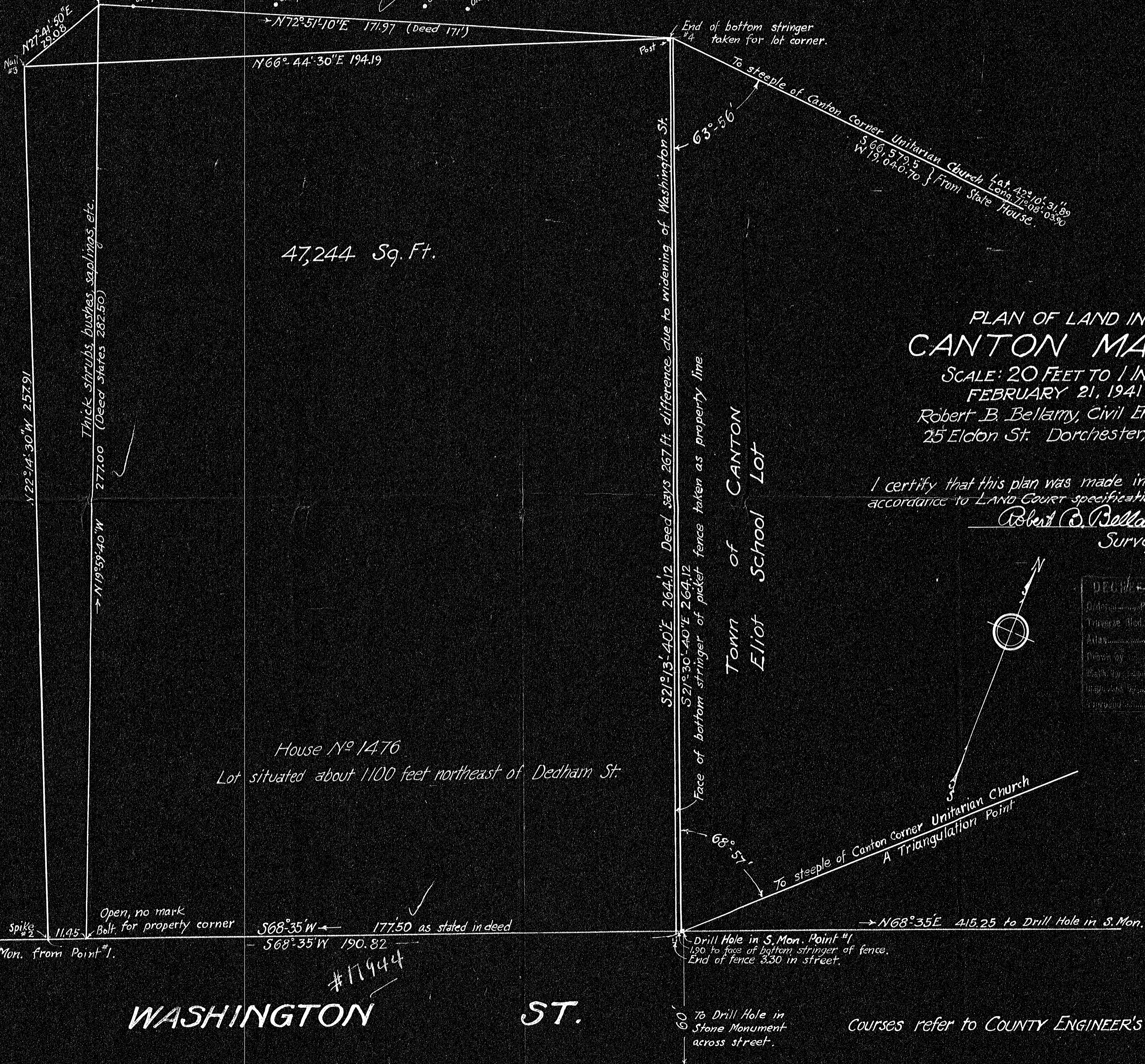


17944

Now or formerly  
Amy A. Downes

Drove iron pipe for corner in hole where old corner fence post, now decayed and fallen, stood.  
old post

Back line straight. Trees prevent a clear sight.  
Old fence posts not set to line.



PLAN OF LAND IN  
**CANTON MASS.**  
 SCALE: 20 FEET TO 1 INCH  
 FEBRUARY 21, 1941  
 Robert B. Bellamy, Civil Engineer  
 25 Eldon St. Dorchester, Mass.

I certify that this plan was made in accordance to LAND COURT specifications.  
 Robert B. Bellamy, Surveyor.

DECISION PLAN	
Order of Plan	Yes
Traverse	Yes
Area	
Drawn by	
Checked by	
Approved by	



← 359.15 to Drill Hole in S. Mon. from Point #1.

Open, no mark Bolt for property corner

$S68^{\circ}35'W$  177.50 as stated in deed

$S68^{\circ}35'W$  190.82

#17944

WASHINGTON ST.

60 To Drill Hole in Stone Monument across street.

Courses refer to COUNTY ENGINEER'S plan.