

KENT

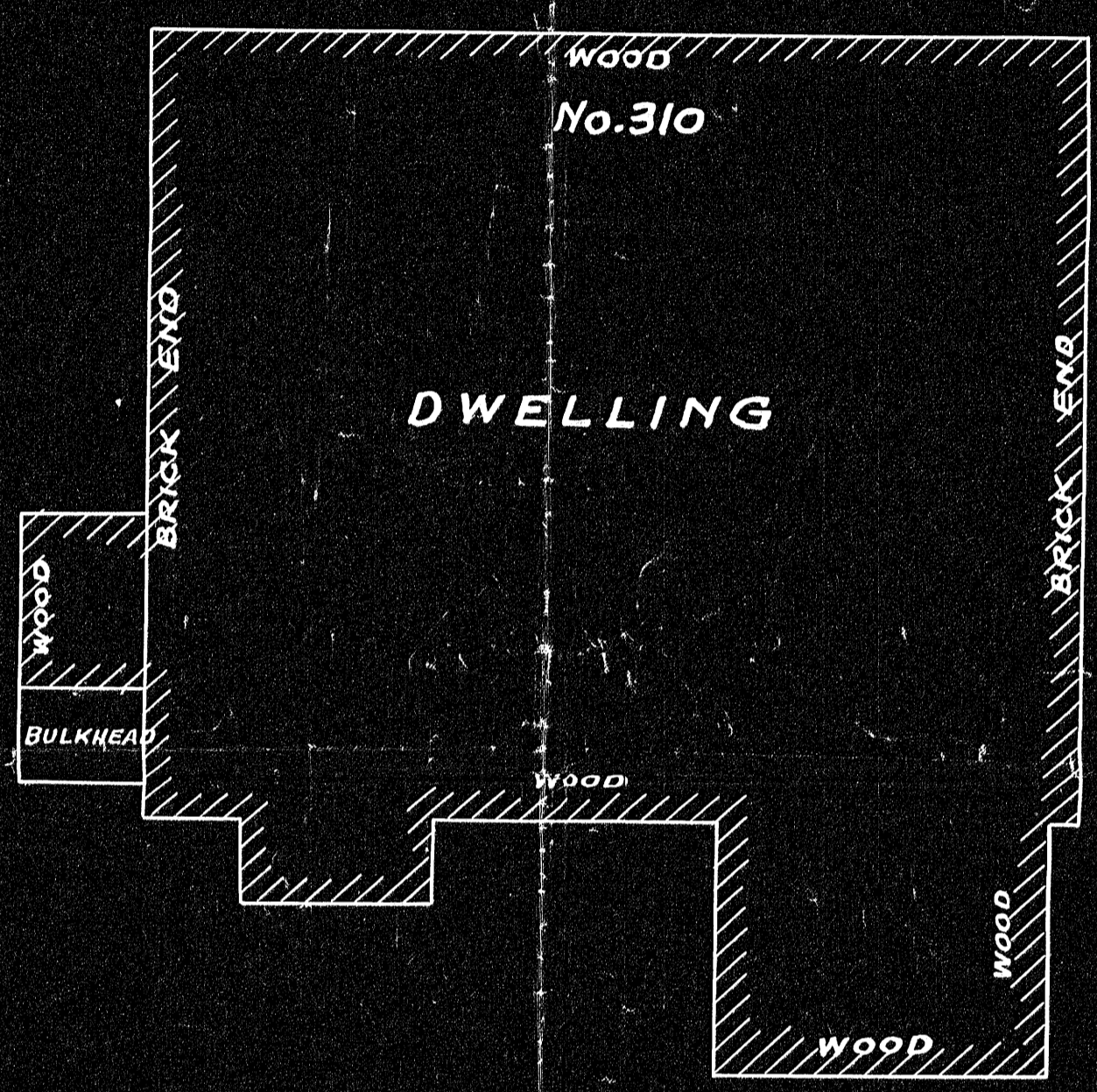
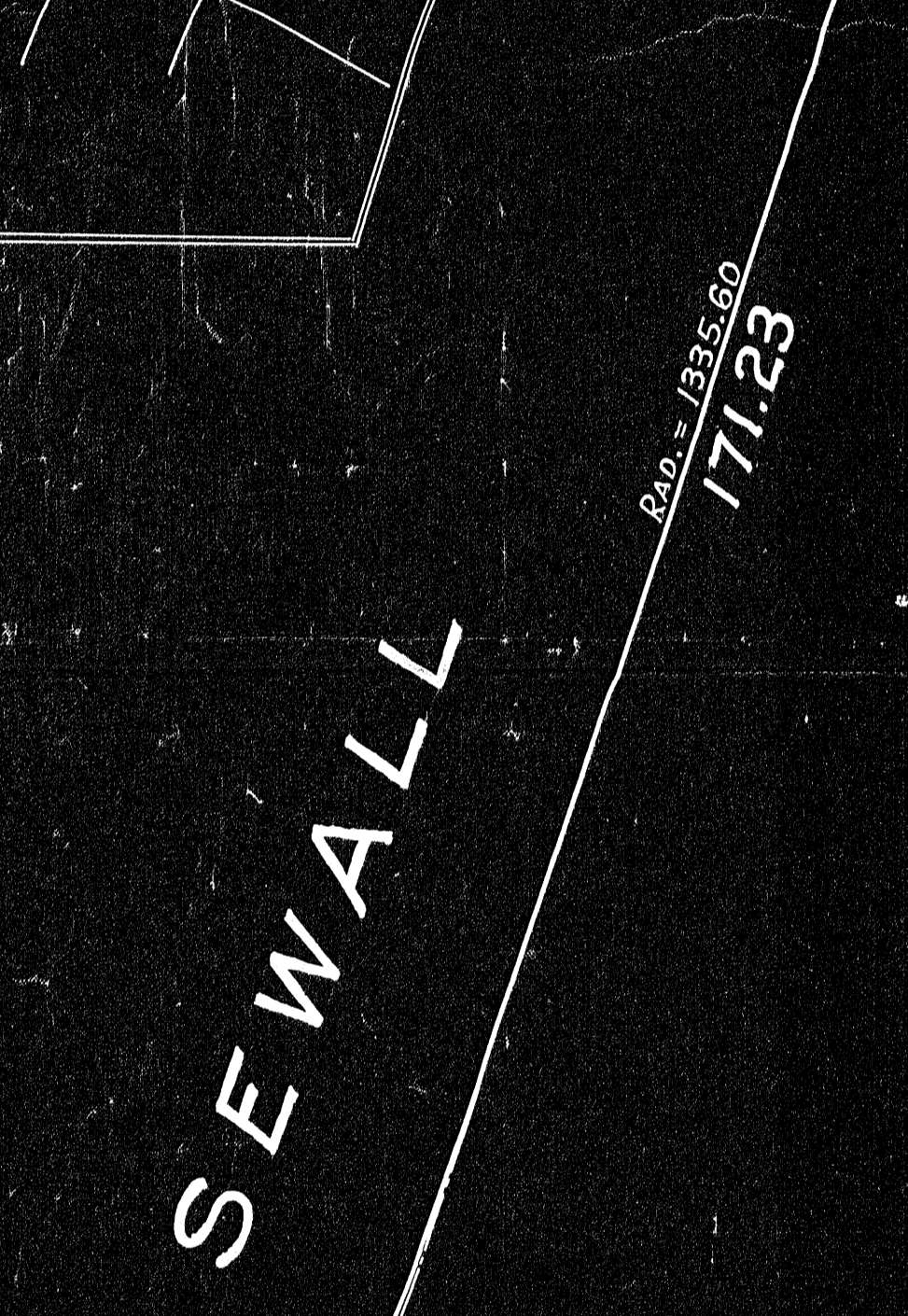
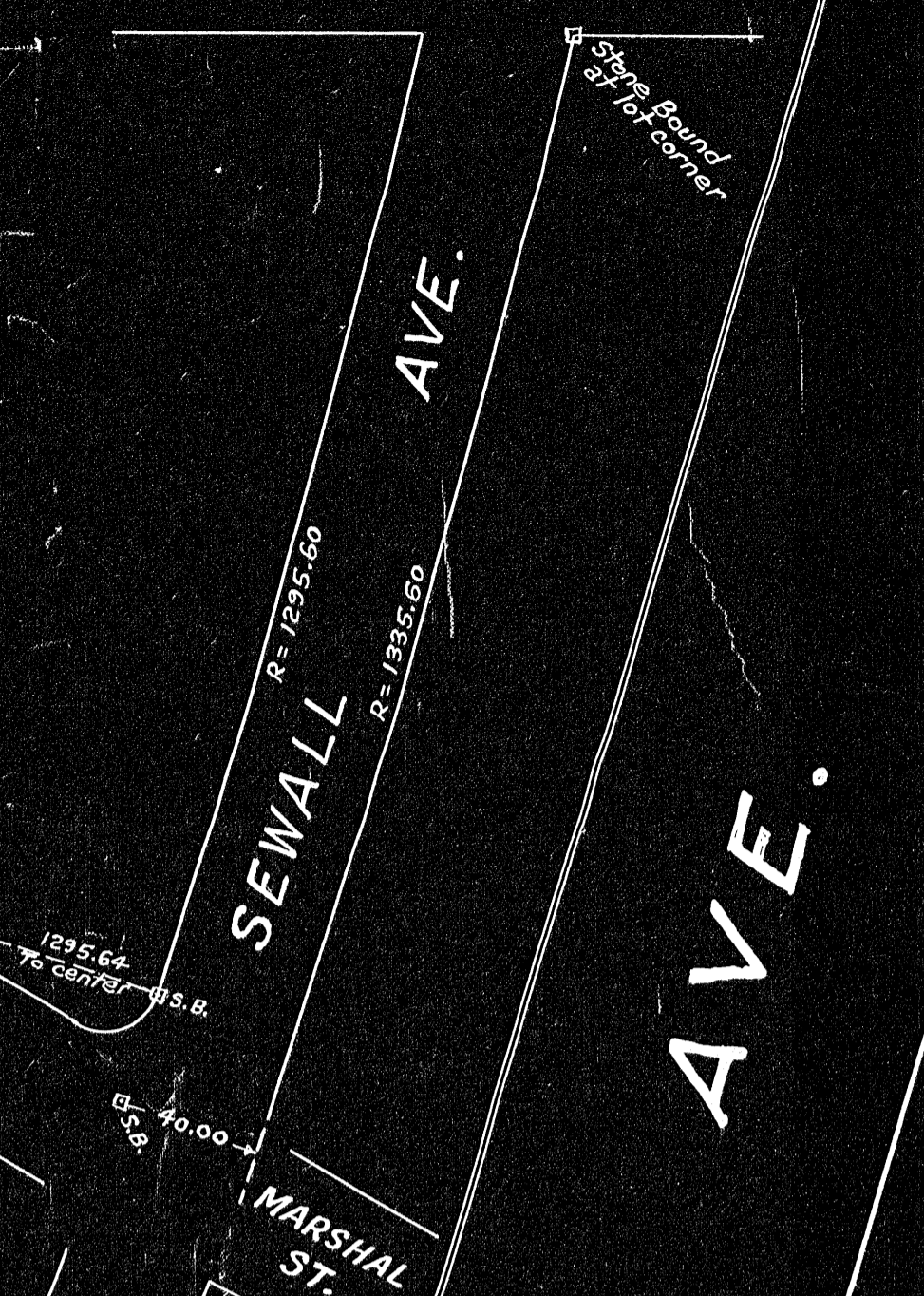
STREET

SUB-SKETCH

KENT ST.

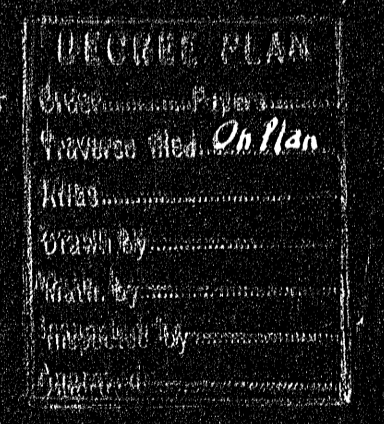
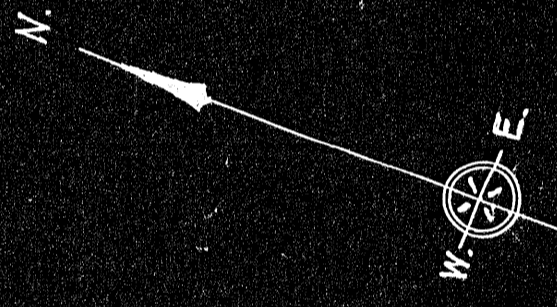
160.07

INT. ANGLE	DEF. ANGLE	AZIMUTH	DISTANCE	+S	-S	+C	-C
107° 23' 30"	72° 36' 30"	0° 0' 0"	160.07			160.070	
89° 49' 40"	90° 10' 20"	90° 10' 20"	171.00	170.999			0.515
88° 04' 36"	91° 55' 24"	182° 05' 44"	210.84			7.711	210.699
74° 42' 14"	105° 17' 46"	287° 23' 30"	171.11			163.288	51.144
360° 00' 00"				170.999	170.999	211.214	211.214



30773. SQ. FT.

Josephine C. Peavy



Plan of Land in
BROOKLINE - MASS.
 Scale 8 feet to an inch.
 Nov. 25, 1940.

William S. Crocker, Civil Engineer
 Successor to Aspinwall & Lincoln
 46 Cornhill, Boston, Mass.

I certify that this survey was made in accordance with
 Land Court Instructions

William S. Crocker

Nov. 25, 1940.

Civil Engineer

Maurice I. Miller
 CELLAR

#17923
 PL 26

17923A