

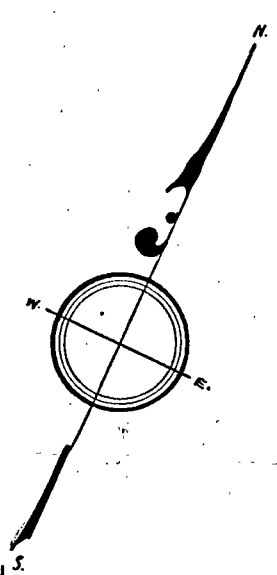
Subdivision of part of Land shown on plan 17774^A

Filed with Cert. of Title No. 25973 Registry District of Norfolk County

LAND IN MEDFIELD

June 19, 1941.

Kenneth E. McIntyre, C. E.



Emerson R. Naugle

N. 65° 30' E.

60.93

N. 61° 22' 00" E.

80.00

Sidney Taylor et al.

Romolo Mezzanotte
Cert. 25973

A.

N. 26° 59' 20" W.

170.46

S. 27° 00' 00" E.

173.14

Richard McDonald

17774^C

280.60

80.00

Cut on S.B.

S. 63° 17' 00" W.

PLEASANT STREET

Separate certificates of title may be issued
for lot A as shown hereon
By the Court

Charles A. Burdett

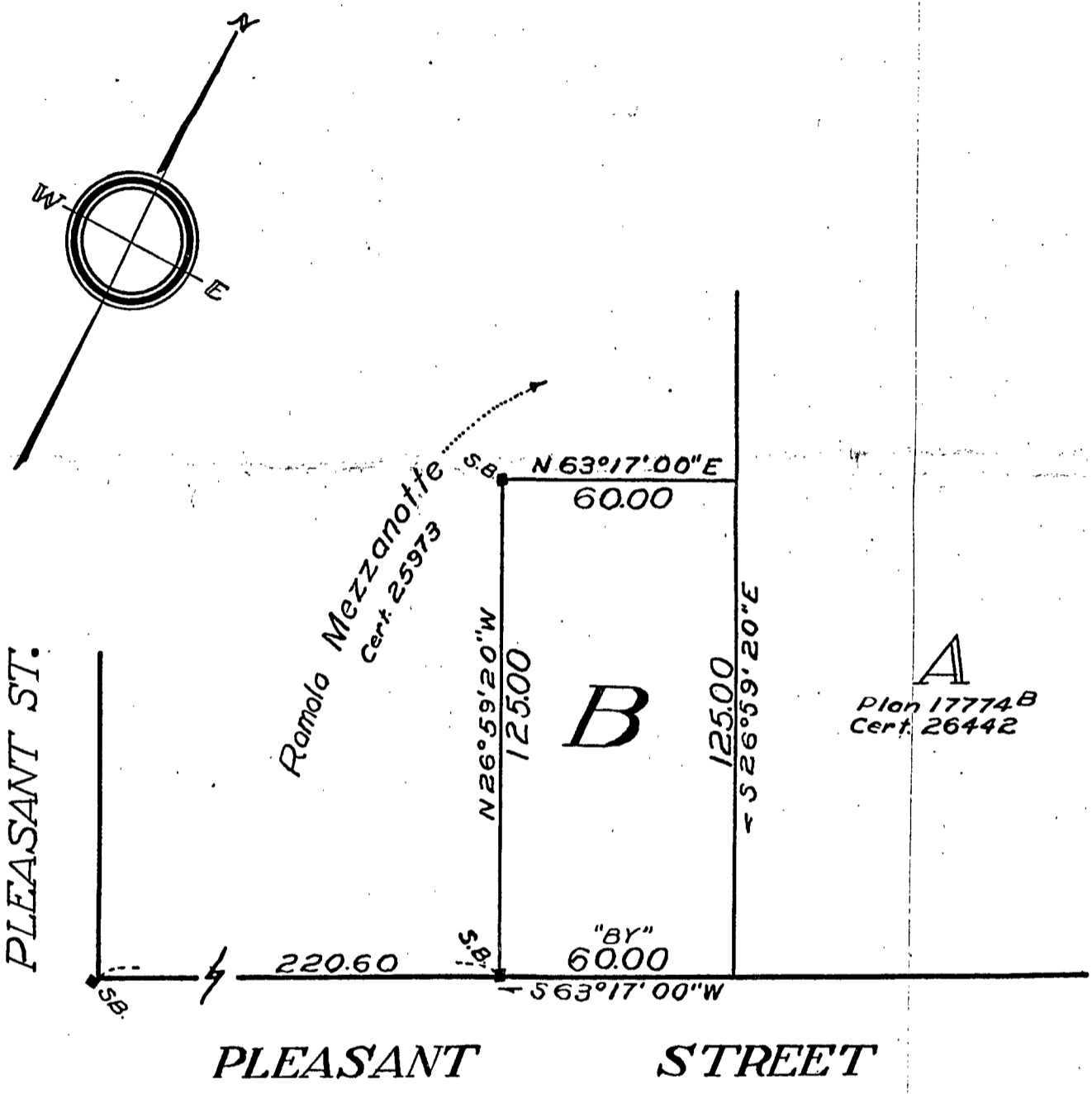
Copy of part of plan
filed in
LAND REGISTRATION OFFICE
JULY 21, 1941.
Scale of this plan 30 feet to an inch

certificate No. 25973 - Romolo Mezzanotte, Owner.

SUBDIVISION PLAN OF LAND IN MEDFIELD

Charles C. Cain, Engineer

June 26, 1948



A
Plan 17774^B
Cert. 26442

Subdivision of Part^A of Land
Shown on Plan 17774^A
Filed with Cert. of Title No. 25973
Registry District of Norfolk County

Separate certificates of title may be issued
for Lot B as shown hereon
By the Court
Wm. E. Stutz
Aug 23 1948

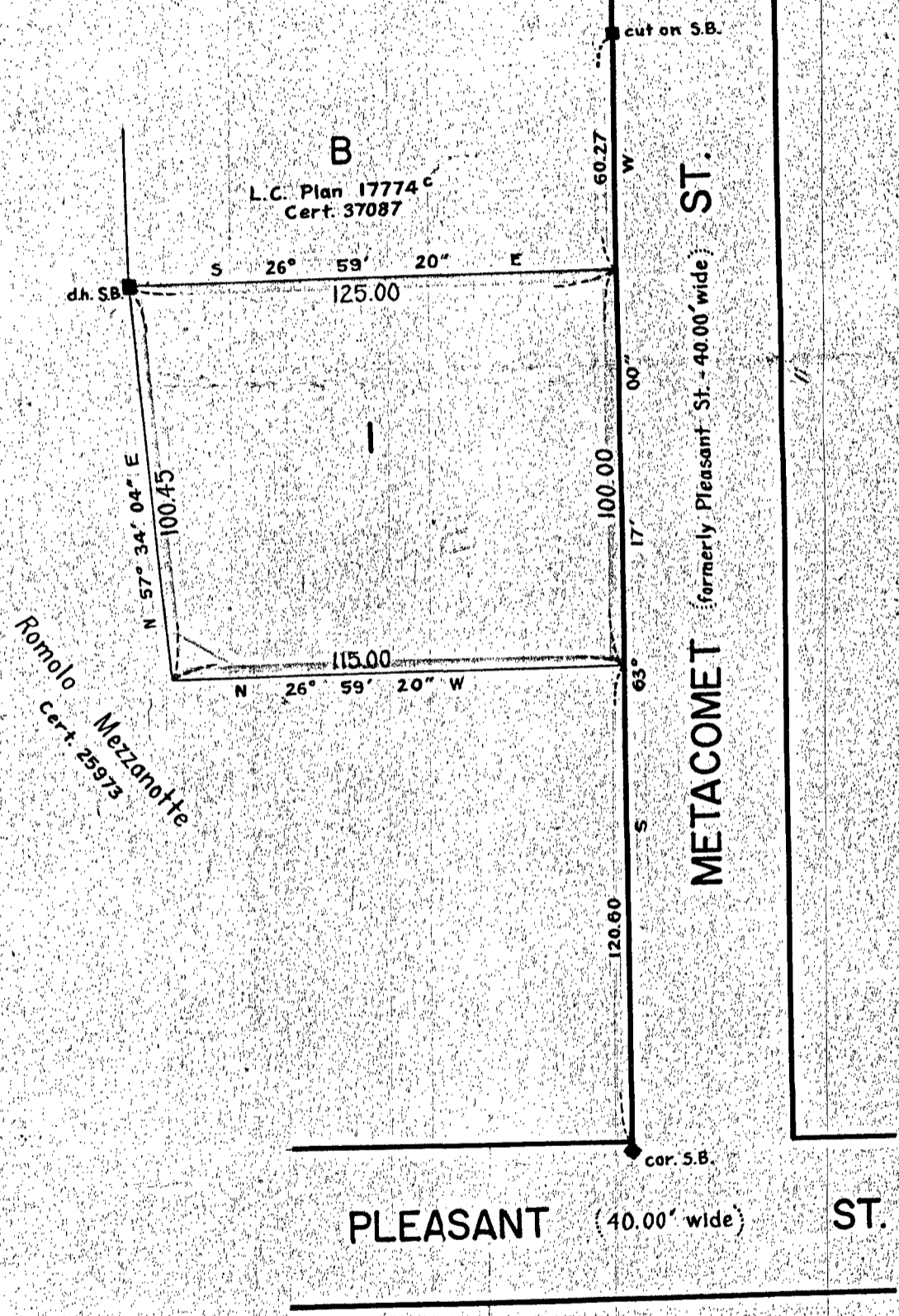
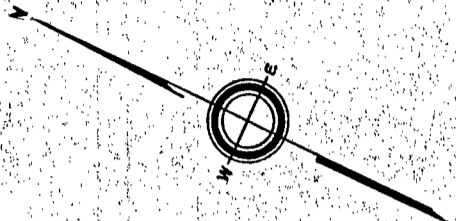
Copy of part of plan
filed in
LAND REGISTRATION OFFICE
AUG. 23, 1948
Scale of this plan 40 feet to an inch
W. T. Fairclough, Engineer for Court

17774D

SUBDIVISION PLAN OF LAND IN MEDFIELD

Cheney Engineering Co.

February 3, 1959



Subdivision of Part of Land
 Shown on Plan 17774A
 Filed with Cert. of Title No. 25973
 Registry District of Norfolk County

Separate certificates of title may be issued for land
 shown hereon as Lot 1
 By the Court.

Thomas B. Cummins
 Deputy Recorder.

FEBRUARY 18, 1959

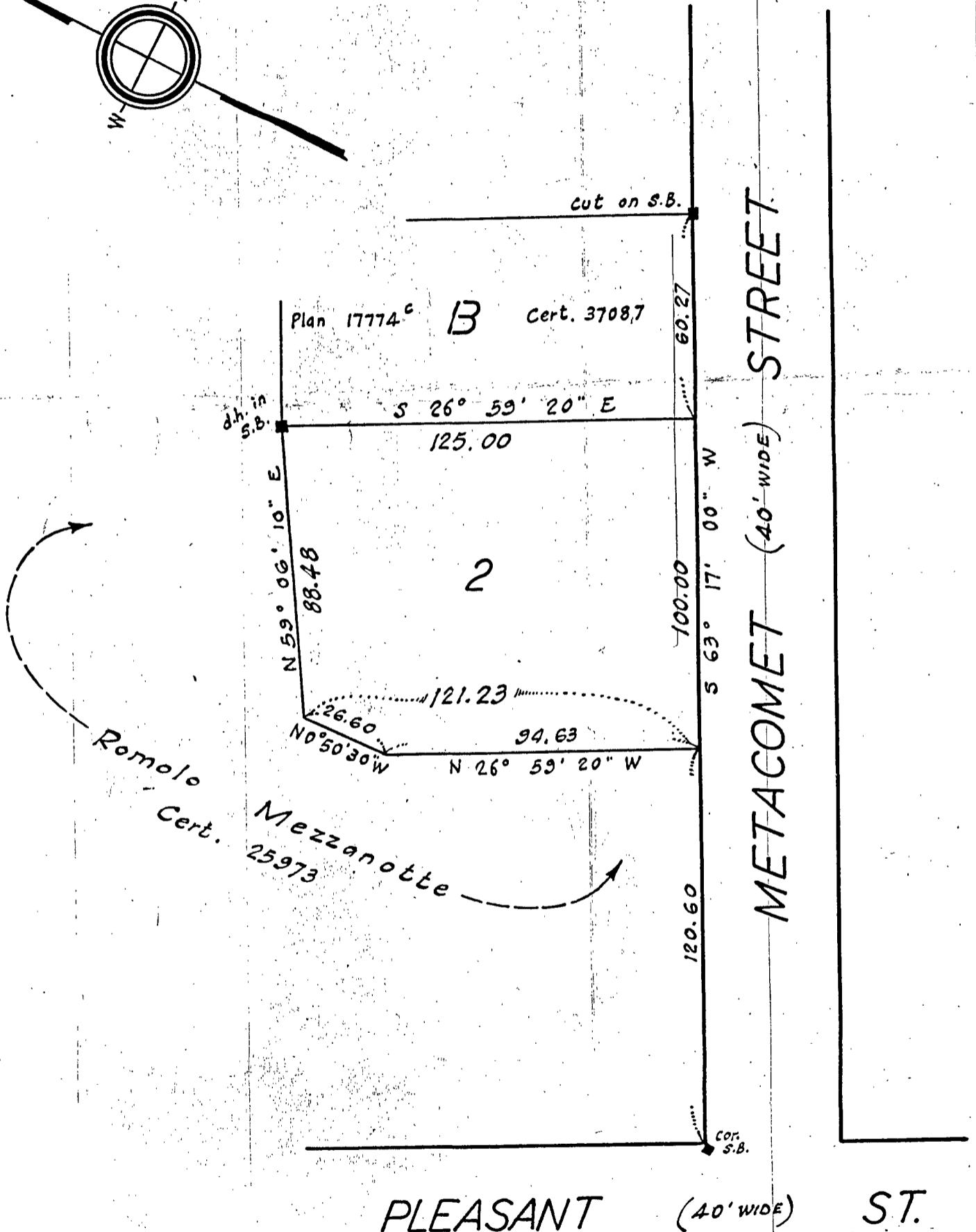
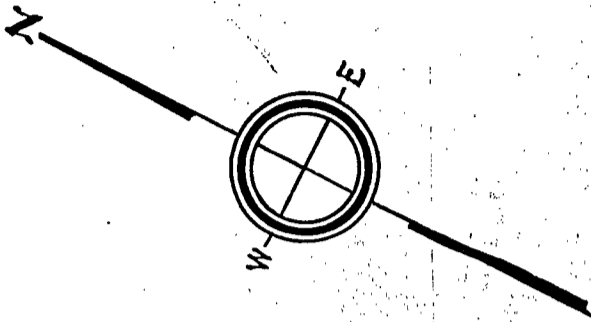
Copy of part of plan
 filed in
LAND REGISTRATION OFFICE
 FEBRUARY 18, 1959
 Scale of this plan 40 feet to an inch
 C.M. Anderson, Engineer for Court

SUBDIVISION PLAN OF LAND IN MEDFIELD

Cheney Engineering Co.,

July 22, 1959

17774^E



Subdivision of Part of Lot 1 & Land
 Shown on Plan 17774^D & 17774^A
 Filed with Cert. of Title No. & 25973
 Registry District of Norfolk County

Separate certificates of title may be issued for land
 shown hereon as Lot 2
 By the Court.

JAN. 13, 1960

Margaret M. Daly
 Recorder

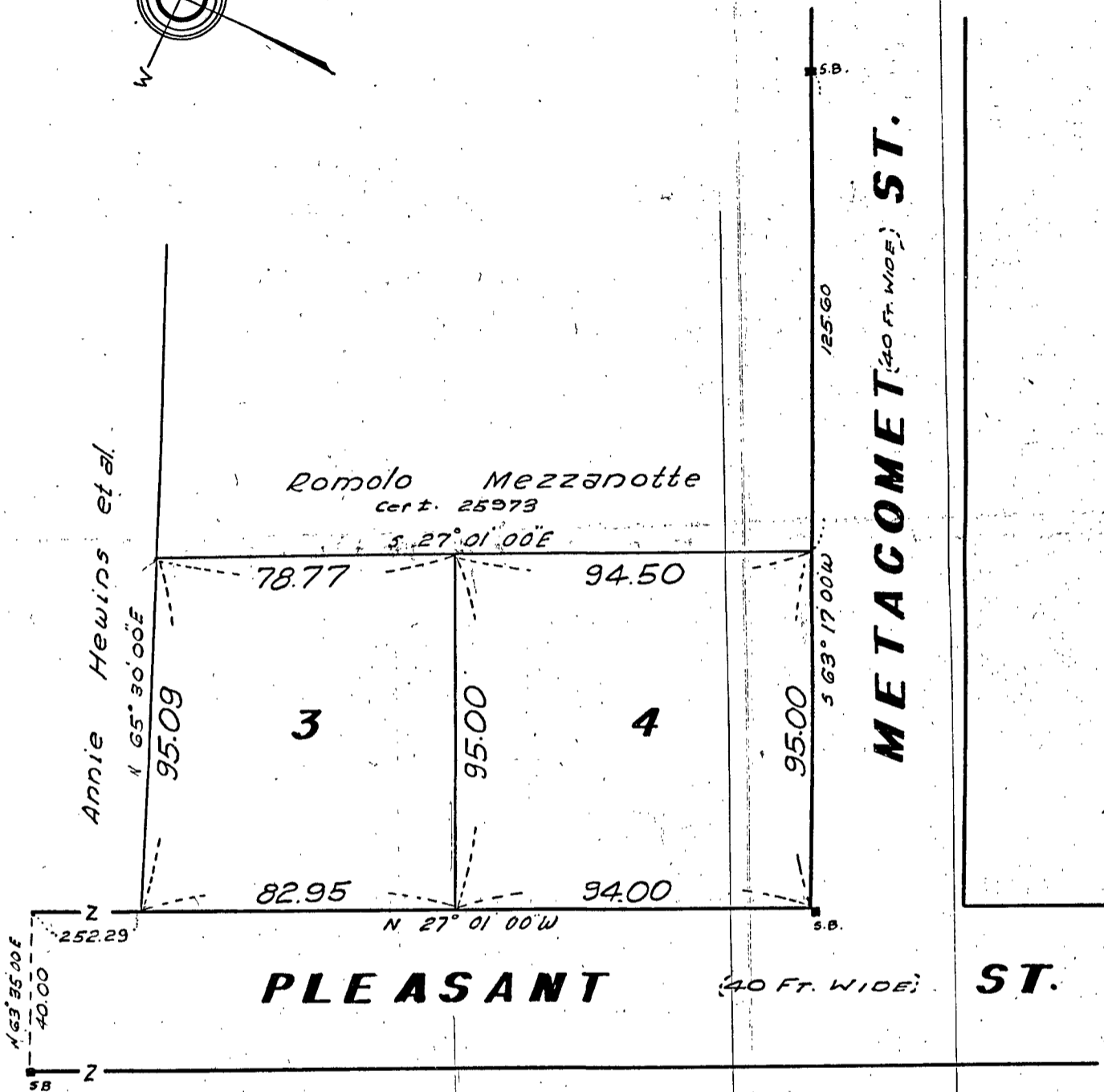
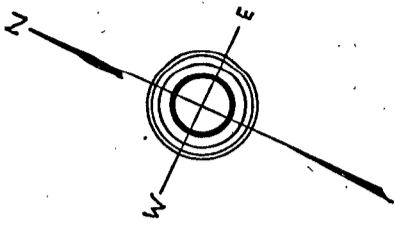
Copy of part of plan
 filed in
LAND REGISTRATION OFFICE
 JAN. 13, 1960
 Scale of this plan 40 feet to an inch
 C.M. Anderson, Engineer for Court ✓

SUBDIVISION PLAN OF LAND IN MEDFIELD

17774 F

Charles C. Cain, Engineer

October 14, 1949



Subdivision of Part of Land
 Shown on Plan 17774A
 Filed with Cert. of Title No. 25973
 Registry District of Norfolk County
 Separate certificates of title may be issued for land
 shown hereon as lots 3 & 4
 By the Court.

NOV 20 1962
Margaret M. Juby
 Recorder.

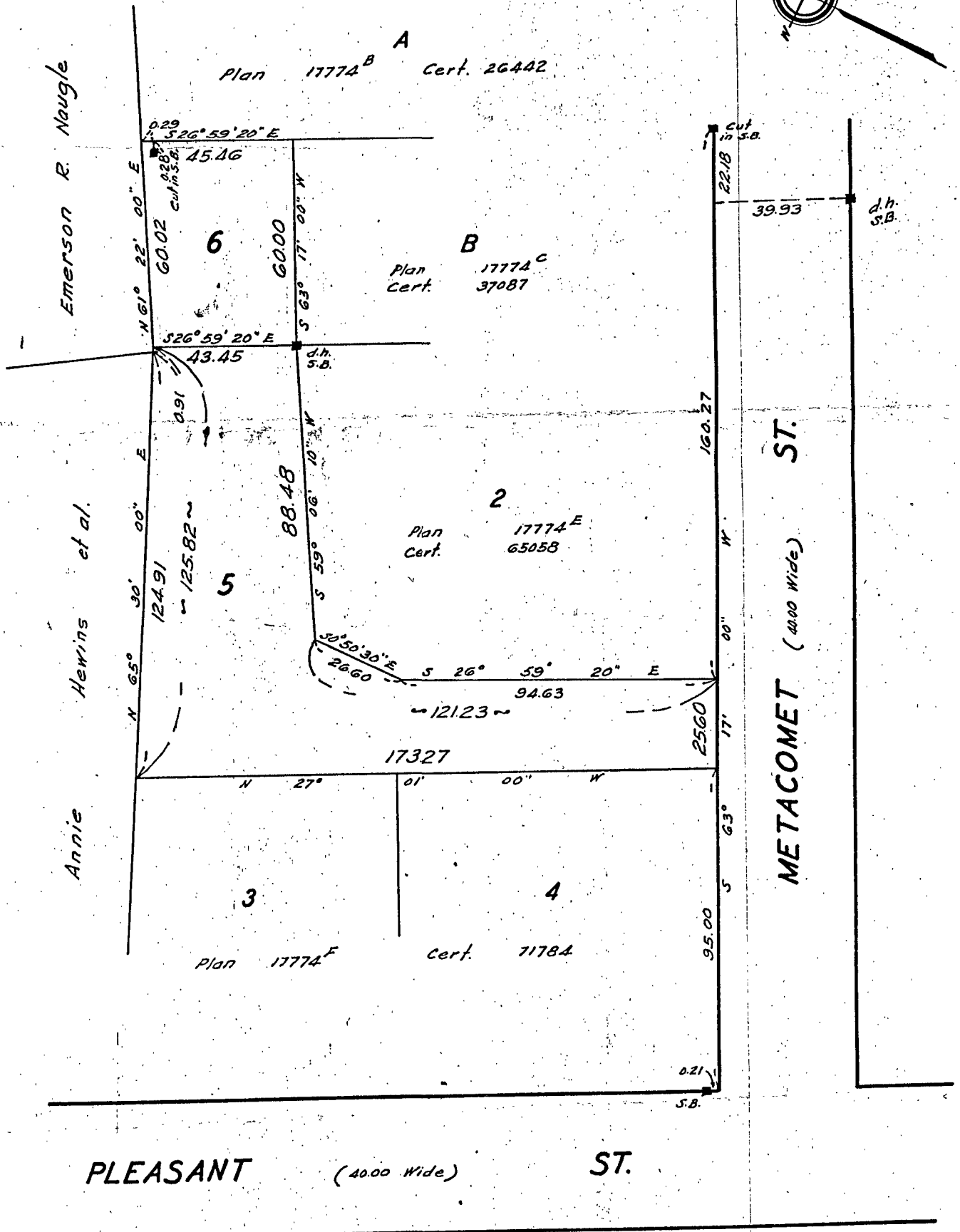
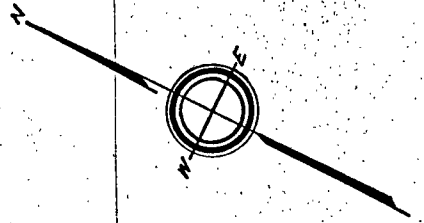
Copy of part of plan
 filed in
LAND REGISTRATION OFFICE
 NOV 20 1962
 Scale of this plan 40 feet to an inch
 C.M. Anderson, Engineer for Court

SUBDIVISION PLAN OF LAND IN MEDFIELD

17774

Cheney Engineering Co., Inc.
Sidney R. Vaughan, Surveyor

April 19, 1974



Subdivision of part of Land
Shown on Plan 17774^A
Filed with Cert. of Title No. 25973
Registry District of Norfolk County

Separate certificates of title may be issued for land
shown hereon as lots 5 & 6
By the Court.

Copy of part of plan
filed in
LAND REGISTRATION OFFICE
JULY 16, 1974
Scale of this plan 40 feet to an inch
R.L. Woodbury, Engineer for Court

JULY 16, 1974
Margaret M. Daly
Recorder

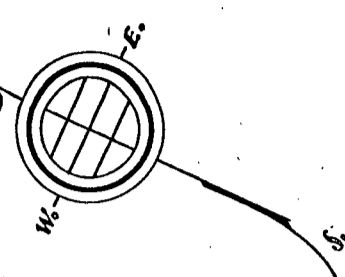
40877

17774

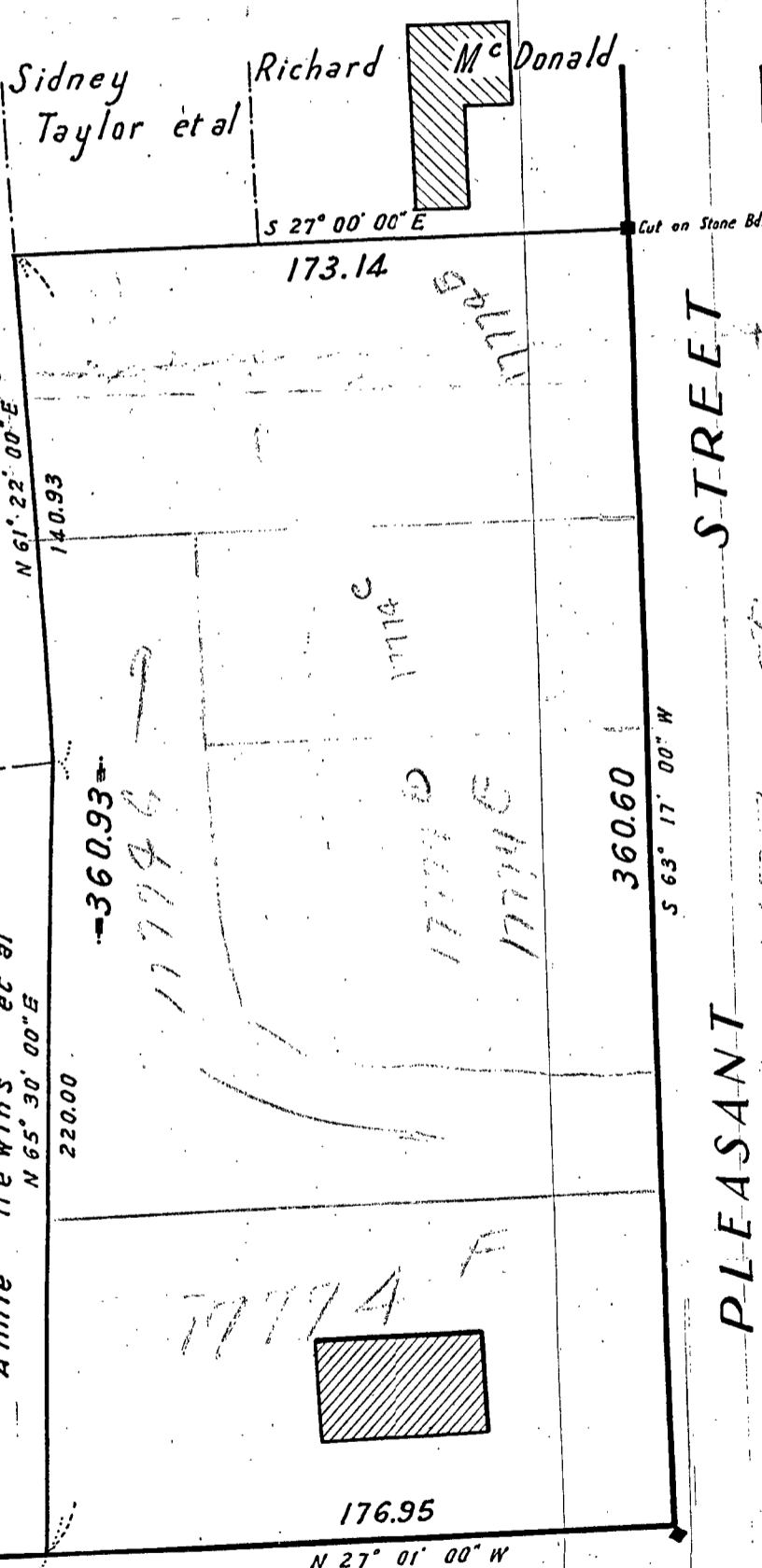
PLAN OF LAND IN MEDFIELD

Kenneth E. McIntyre, C.E.

OCTOBER 14, 1940.



Emerson R. Naugle



PLEASANT STREET

PLEASANT STREET

Copy of part of plan
 filed in
LAND REGISTRATION OFFICE
 OCT. 21. 1940
 Scale of this plan 50 feet to an inch
 C. B. Humphrey, Engineer for Court