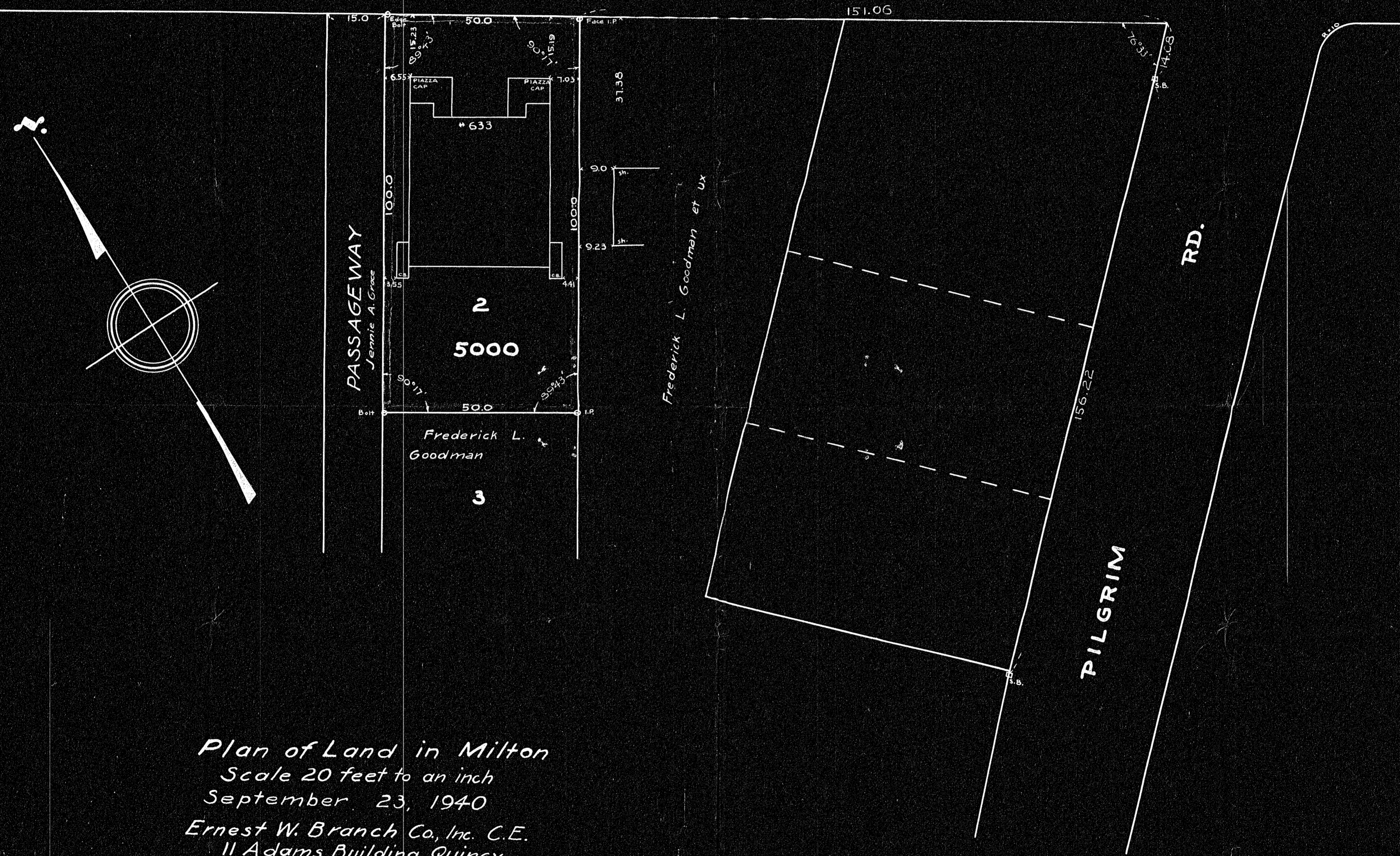


ADAMS

ST.



Plan of Land in Milton  
 Scale 20 feet to an inch  
 September 23, 1940  
 Ernest W. Branch Co., Inc. C.E.  
 11 Adams Building, Quincy

No

17735  
M 2-11

I certify that this survey was made in accordance  
 with Land Court instructions.  
 Robert S. Booth Surveyor.