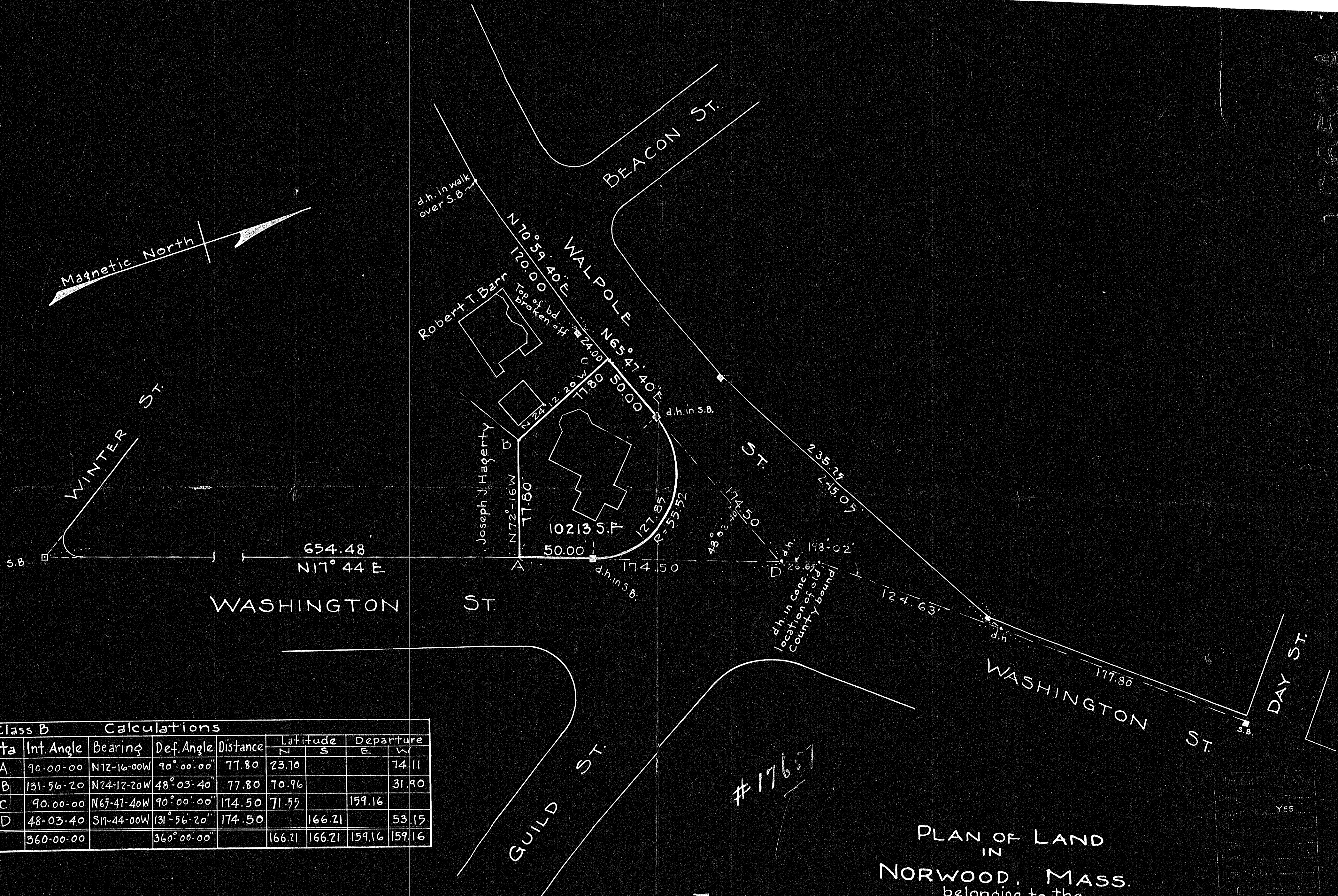


17657A



Class B Calculations									
Sta	Int. Angle	Bearing	Def. Angle	Distance	Latitude		Departure		
					N	S	E	W	
A	90-00-00	N12-16-00W	90°-00'-00"	77.80	23.70				74.11
B	131-56-20	N24-12-20W	48°-03'-40"	77.80	70.96				31.90
C	90-00-00	N65-47-40W	90°-00'-00"	174.50	71.55			159.16	
D	48-03-40	S17-44-00W	131°-56'-20"	174.50		166.21			53.15
	360-00-00		360°-00'-00"		166.21	166.21	159.16	159.16	

I certify that this survey was made in accordance with Land Court instructions
 June 14, 1940
 A.W. Thompson
 Surveyor
 Norwood, Mass.

PLAN OF LAND
 IN
 NORWOOD, MASS.
 belonging to the
 TRUSTEES OF THE METHODIST EPISCOPAL CHURCH OF NORWOOD
 Scale 1"=40'
 June 14, 1940
 A.W. Thompson
 Engineer

DEED PLAN	
YES	

17657A