

WASHINGTON ST.

S 1000.00
W 1000.00
N 28° 16' 55" E
50.98
N 61° 44' 05" W
59.96

L = 39.42
R = 1880.18
Z = 01° 12' 05"

L = 227.87
T = 114.08
R = 1880.18
Z = 06° 56' 39"

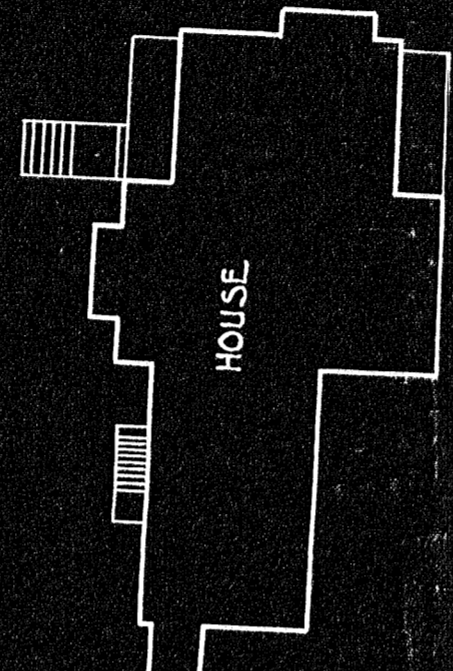
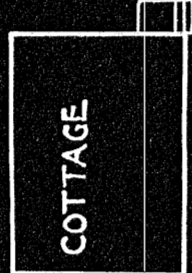
5729.90
W 832.93
1.33 off iron fence
549° 39' 45" E
1.33 off iron fence
197.54
Quarry mark, face of curb
5.55

L = 137.01
R = 1880.18
T = 68.54
Z = 04° 10' 31"

Chord
N 42° 15' 45" E
85.118.59
S 62° 23' 11" W 74.163

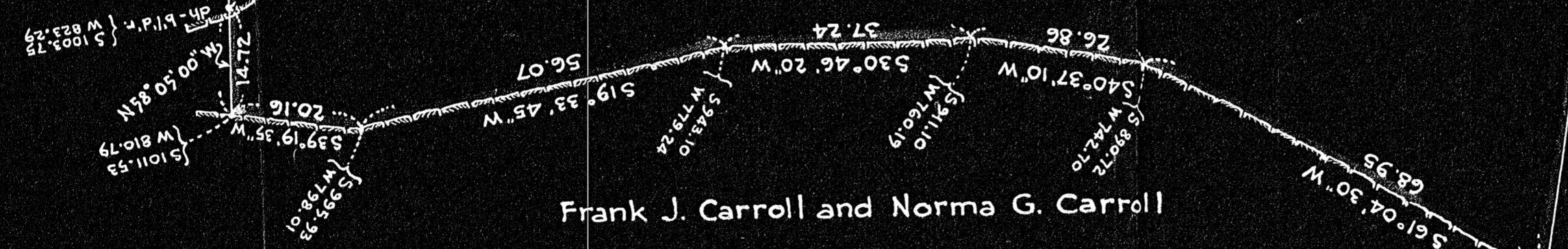
37097 Sq. ft.

Albert E. Lowry



MILL POND

Flowage in Schindler and Co.

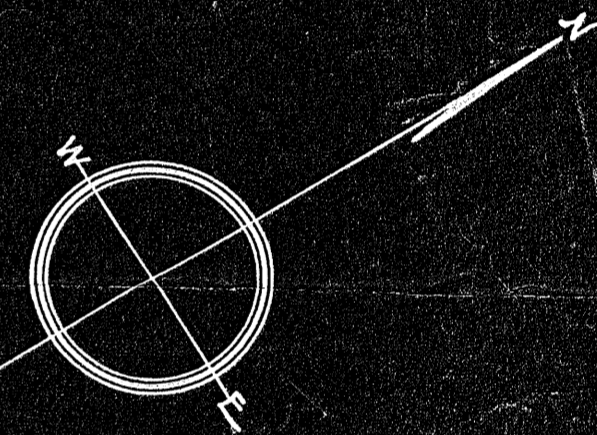


Frank J. Carroll and Norma G. Carroll

Schindler & Co.

Eliza I. Reilly

MAGNETIC NORTH



PLAN OF LAND IN CANTON, MASS.

Scale - 1 inch = 20 ft.

E. W. Pilling
Engineer

June 26, 1940

I hereby certify that this plan was made in accordance with Land Court instructions.

E. W. Pilling
Engineer

#17655-FILE

17655A

DEGREE PLAN
No