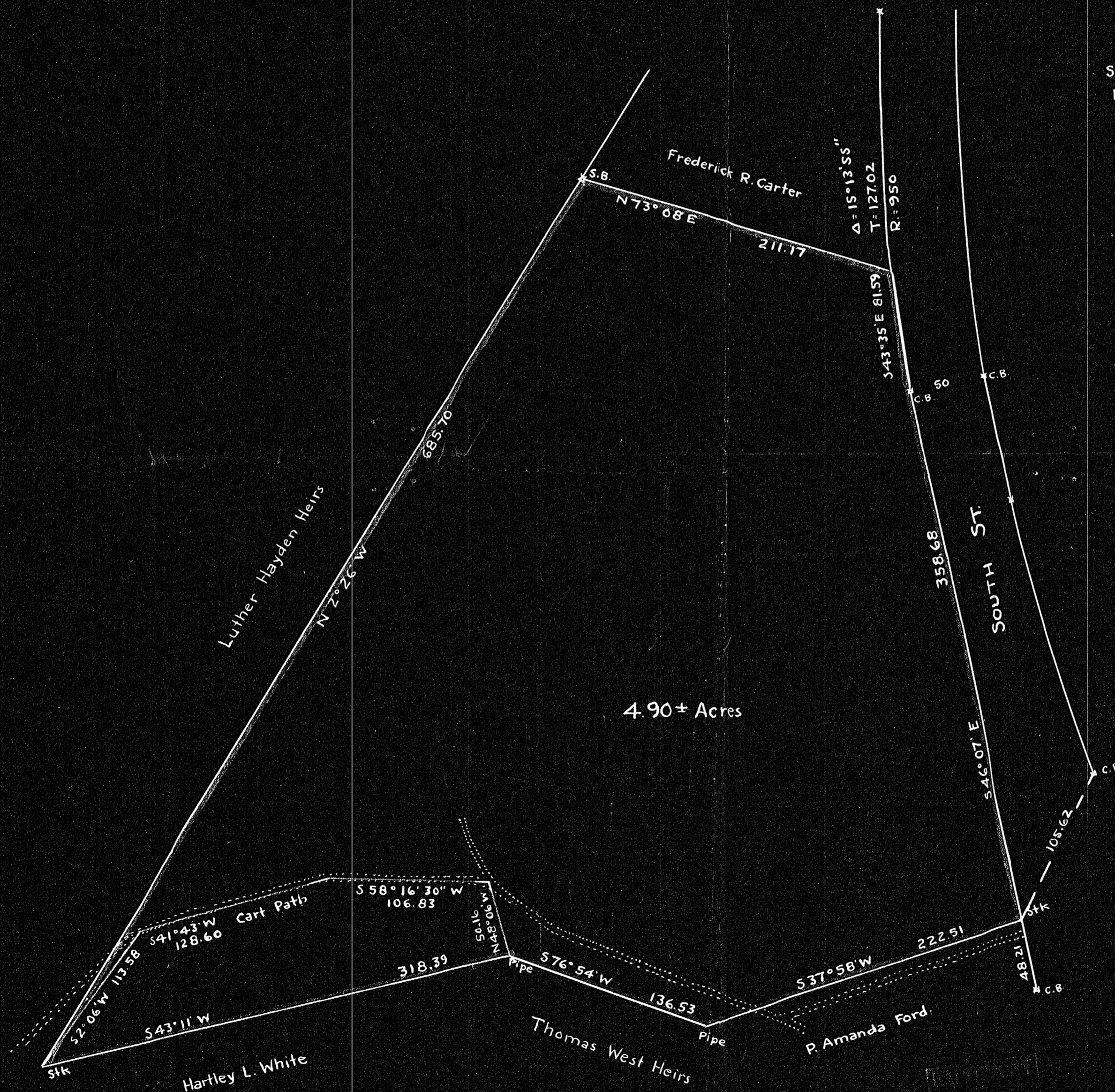


| Bearing | Dist | N. | S. | E. | W. |
|-------------|--------|--------|--------|--------|--------|
| S 43° 35' E | 81.59 | | 89.10 | 56.25 | |
| S 46° 07' E | 358.68 | | 248.63 | 258.52 | |
| S 37° 58' W | 222.51 | | 175.42 | | 136.89 |
| S 76° 54' W | 136.53 | | 30.94 | | 132.98 |
| S 43° 11' W | 318.39 | | 232.16 | | 217.89 |
| N 2° 26' W | 685.70 | 685.08 | | | 29.10 |
| N 73° 08' E | 211.17 | 61.27 | | 202.09 | |
| | | 746.35 | 746.27 | 516.86 | 516.87 |

PLAN OF LAND IN HOLBROOK
 SURVEYED FOR
JEREMIAH J. SULLIVAN
 Scale 60 feet to an inch May 6, 1940
 Hayward & Hayward, Surveyors, Brockton, Mass.



DEGREE PLAN
 Order
 Traverse file On Plan
 Atlas
 Drawn by
 Math. by
 Inspected by
 Approved by

17559

We certify that this survey was made in accordance with Land Court Instructions. May 6, 1940 Hayward & Hayward, Surveyors.