

PLAN OF LAND IN BROOKLINE MASS.

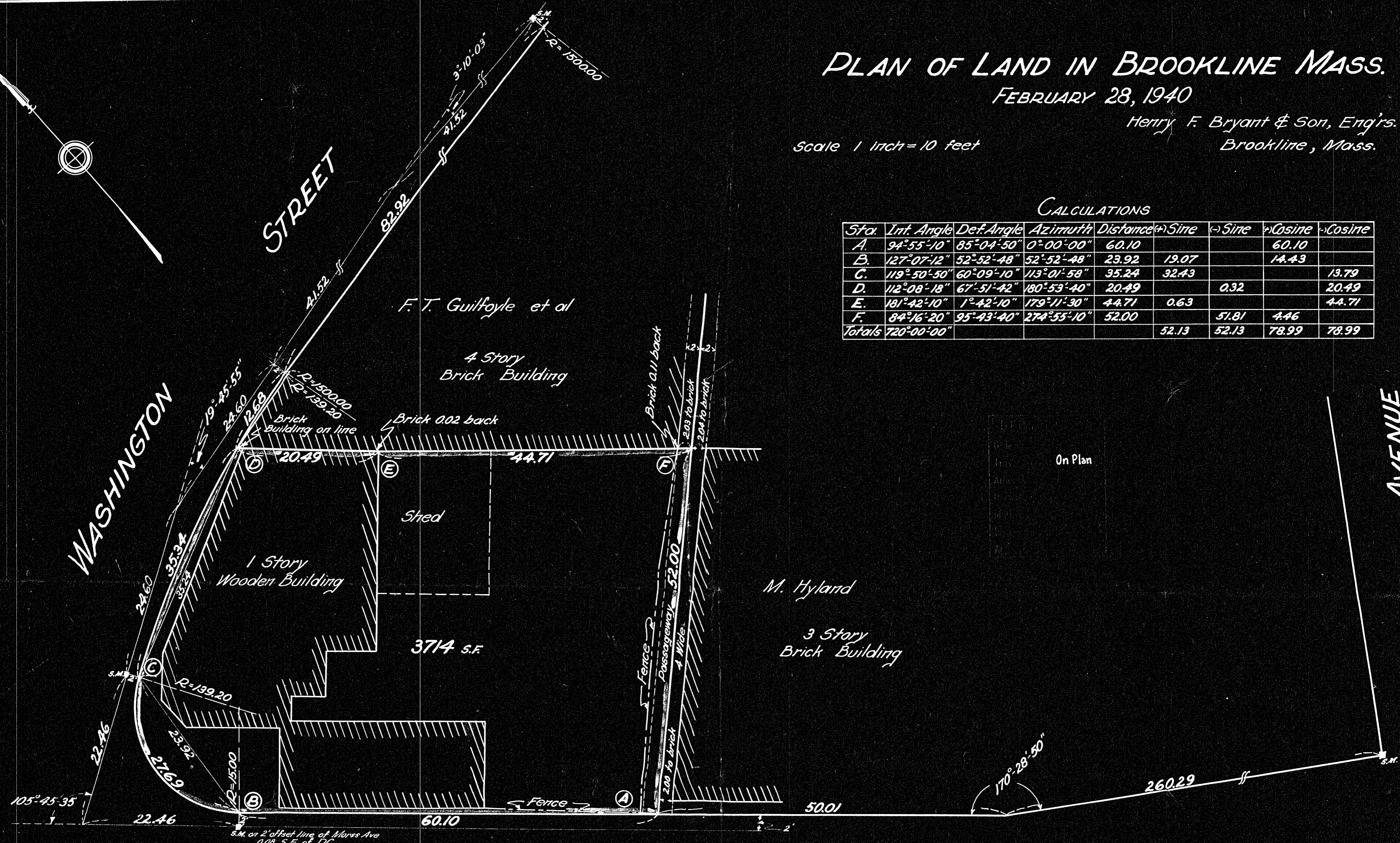
FEBRUARY 28, 1940

Henry F. Bryant & Son, Eng'rs.
Brookline, Mass.

Scale 1 inch = 10 feet

CALCULATIONS

Sta.	Int. Angle	Def. Angle	Azimuth	Distance	(+) Sine	(-) Sine	(+) Cosine	(-) Cosine
A.	94°55'10"	85°04'50"	0°00'00"	60.10			60.10	
B.	127°07'12"	52°52'48"	52°52'48"	23.92	19.07		14.43	
C.	119°50'50"	60°09'10"	113°01'58"	35.24	32.43			13.79
D.	112°08'18"	67°51'42"	180°53'40"	20.49		0.32		20.49
E.	181°42'10"	1°42'10"	179°11'30"	44.71	0.63			44.71
F.	84°16'20"	95°43'40"	274°55'10"	52.00		51.81	4.46	
Totals	720°00'00"				52.13	52.13	78.99	78.99



MORSS

AVENUE

17474

We certify that this plan was made in accordance
with Land Court instructions.
Date - Feb. 28, 1940
Henry F. Bryant & Son
by R. H. Jones Surveyors