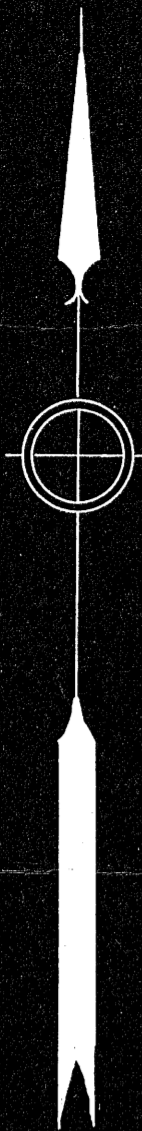
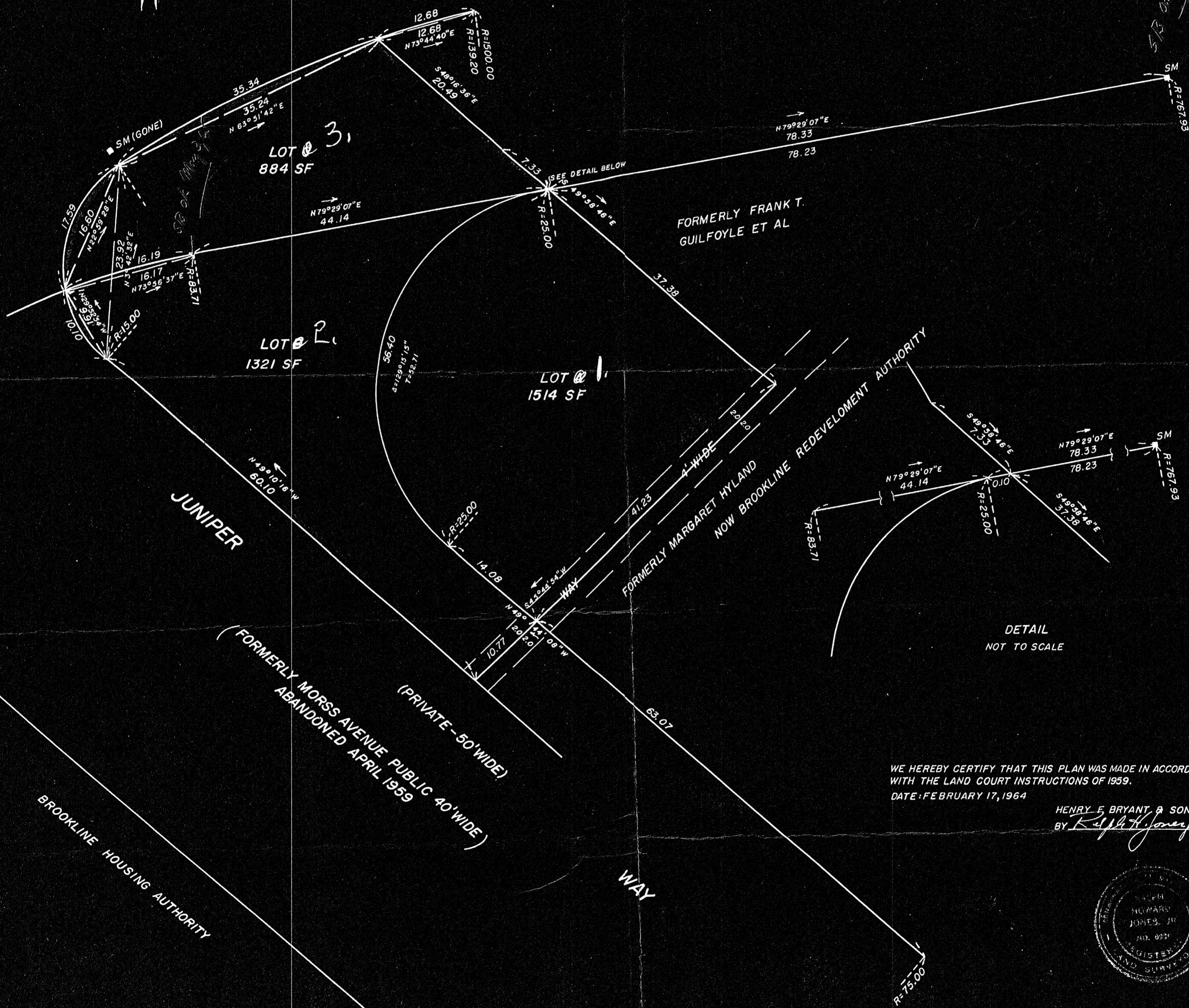


TRAVERSE TABLE ON PROPERTY LINES

INTERIOR ANGLE	DEFLECTION ANGLE	BEARING	DISTANCE	LATITUDE		DEPARTURE	
				NORTH	SOUTH	EAST	WEST
94°55'10"	85°04'50"	N 49°10'16"W	60.10	39.294			45.476
127°07'12"	52°52'48"	N 3°42'32"E	23.92	23.870		1.547	
119°50'50"	60°09'10"	N 63°51'42"E	35.24	15.525		31.636	
112°08'18"	67°51'42"	S 48°16'36"E	20.49		13.640	15.293	
181°42'10"	1°42'10"	S 49°58'46"E	44.71		28.751	34.240	
84°16'20"	95°43'40"	S 45°44'54"W	52.00		36.286		37.247
720°00'00"				78.689	78.677	82.716	82.723



WASHINGTON (COUNTY HIGHWAY) STREET  
(VARIABLE WIDTH)



WE HEREBY CERTIFY THAT THIS PLAN WAS MADE IN ACCORDANCE WITH THE LAND COURT INSTRUCTIONS OF 1959.  
DATE: FEBRUARY 17, 1964

HENRY F. BRYANT & SON, INC.  
BY *Ralph H. Jones*



NOTE: BEARINGS DIFFER 0°02'00" FROM COUNTY BEARINGS

BROOKLINE PLANNING BOARD DATE 2/17/64  
APPROVAL UNDER THE SUBDIVISION CONTROL LAW NOT REQUIRED.  
SINCE LOTS A, B & C ARE TO BE TRANSFERRED TO ABUTTING OWNERS OR TAKEN FOR STREET PURPOSES, NO DETERMINATION HAS BEEN MADE AS TO COMPLIANCE WITH THE ZONING BY-LAW.

*Ann D. McHugh*

17474 B  
LANDCOURT  
JUL 23 '64  
FILED

**SUBDIVISION PLAN OF LAND**  
IN  
**BROOKLINE, MASS.**

SCALE: 1 INCH = 10 FEET HENRY F. BRYANT & SON, INC.  
DATE: FEBRUARY 17, 1964 ENGINEERS BROOKLINE, MASS.

BEING A SUBDIVISION OF THE LOT SHOWN ON A PLAN BY HENRY F. BRYANT & SON, ENG'S. DATED FEB. 28, 1940.  
LAND COURT PLAN NO. 17474A