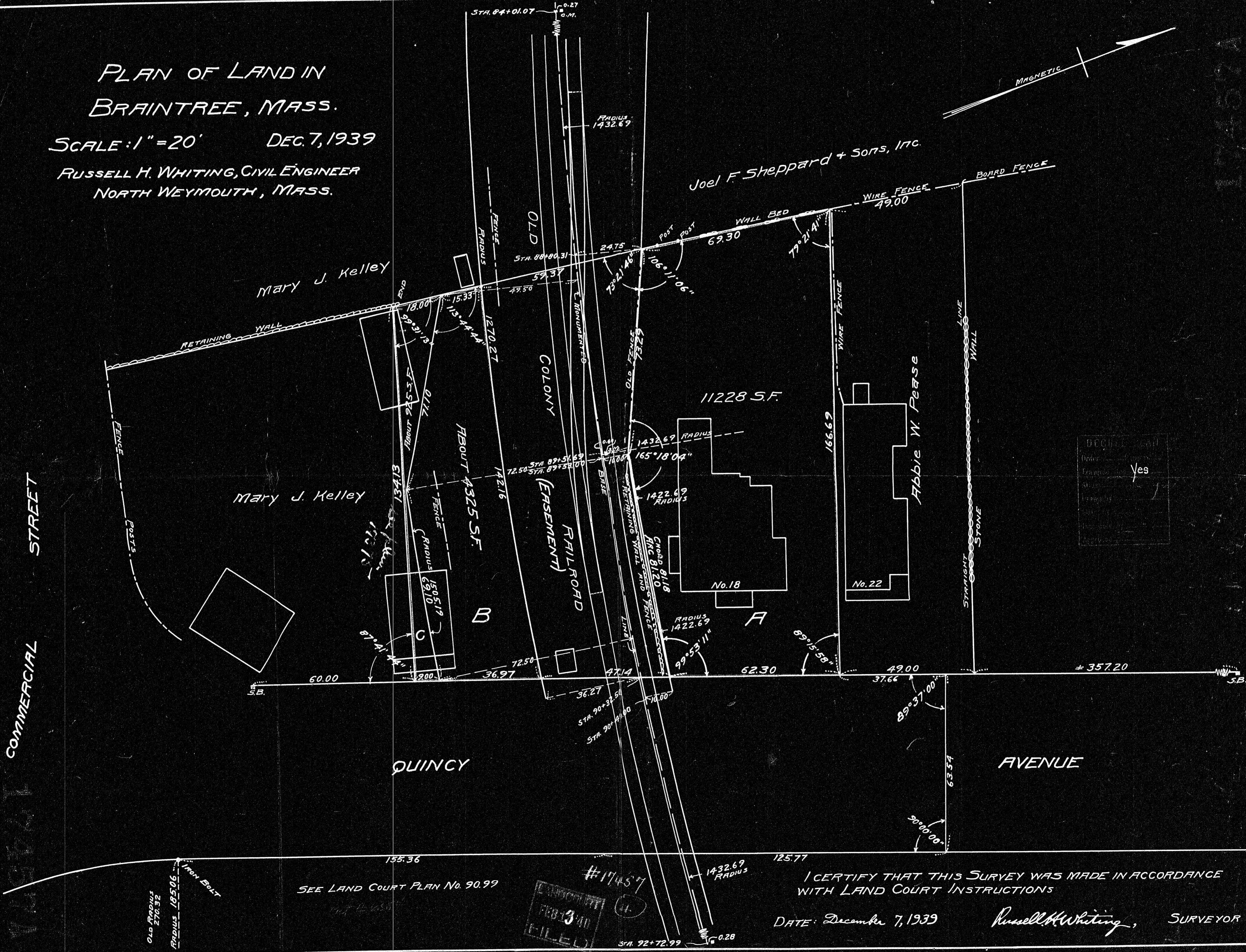
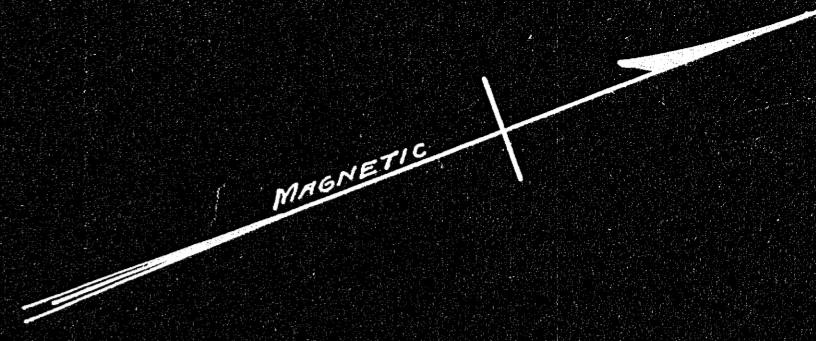


PLAN OF LAND IN
BRAINTREE, MASS.

SCALE: 1" = 20' DEC. 7, 1939

RUSSELL H. WHITING, CIVIL ENGINEER
NORTH WEYMOUTH, MASS.



DECREE PLAN
 Drawn: _____
 Framed: Yes
 Filed: _____
 Date: _____

SEE LAND COURT PLAN No. 90.99

#17457
 FEB 3 1940
 FILED

I CERTIFY THAT THIS SURVEY WAS MADE IN ACCORDANCE
WITH LAND COURT INSTRUCTIONS

DATE: December 7, 1939

Russell H. Whiting, SURVEYOR

Old Radius 270.32
 Radius 185.06
 Iron Bolt

STA. 92+72.99 0.28