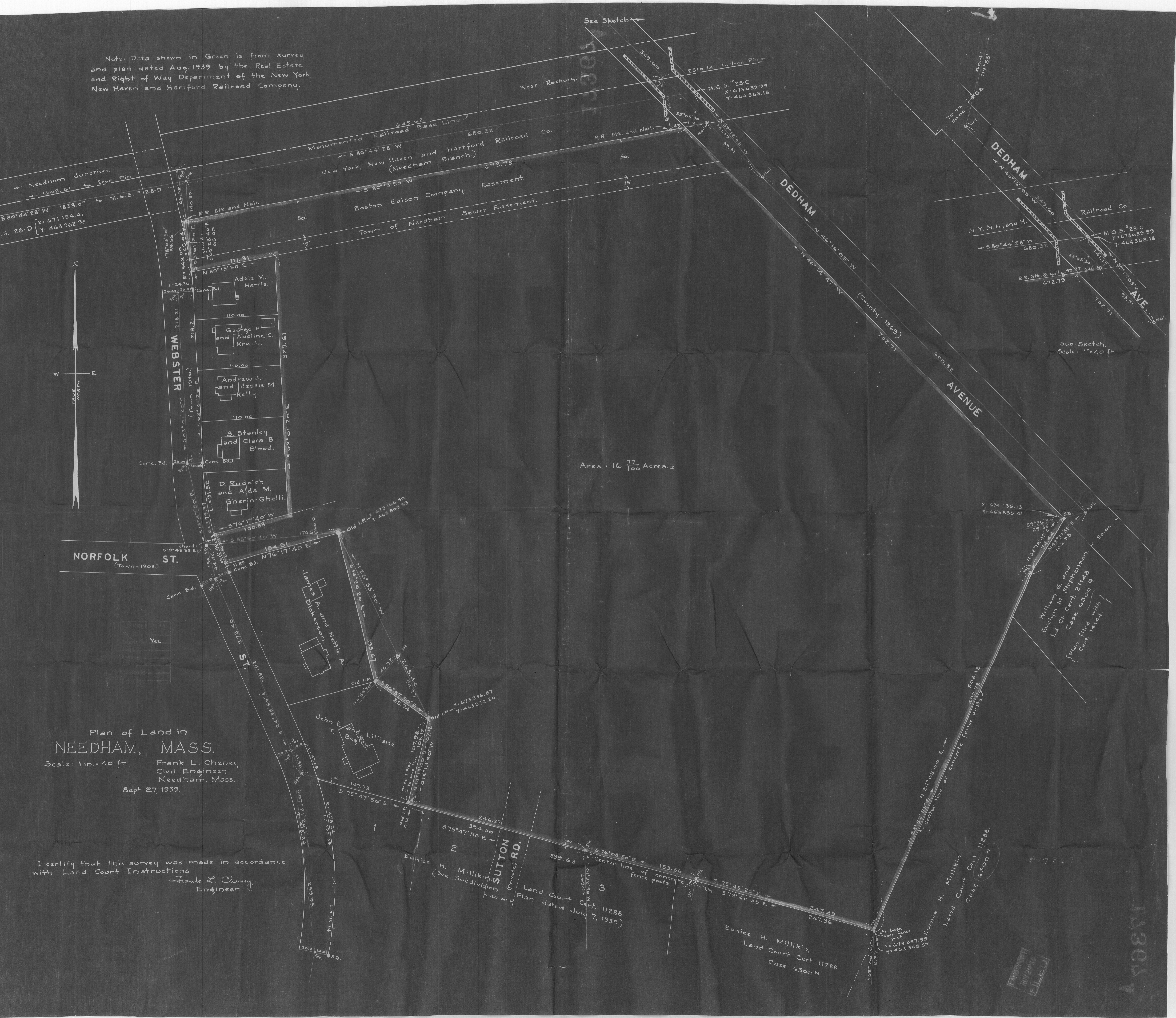


Note: Data shown in Green is from survey and plan dated Aug. 1939 by the Real Estate and Right of Way Department of the New York, New Haven and Hartford Railroad Company.



Plan of Land in
NEEDHAM, MASS.

Scale: 1 in. = 40 ft.

Frank L. Cheney,
Civil Engineer,
Needham, Mass.

Sept. 27, 1939.

I certify that this survey was made in accordance with Land Court Instructions.

Frank L. Cheney,
Engineer.

Area = 16.77/100 Acres ±

Sub-Sketch
Scale: 1" = 40 ft.

William G. and
Evelyn M. Stephenson,
Ld. Ct. Cert. 21148.
Case 6300 Q
{ Plan filed with
Cert. 14144. }

Eunice H. Millikin,
Land Court Cert. 11288,
plan dated July 7, 1939.

Eunice H. Millikin,
Land Court Cert. 11288,
Case 6300 N

Eunice H. Millikin,
Land Court Cert. 11288,
Case 6300 N

FILED

11365A