

17264A

Plan of Land
in
WALPOLE, MASS.

Scale: 1 inch = 60 feet. June, 1939.

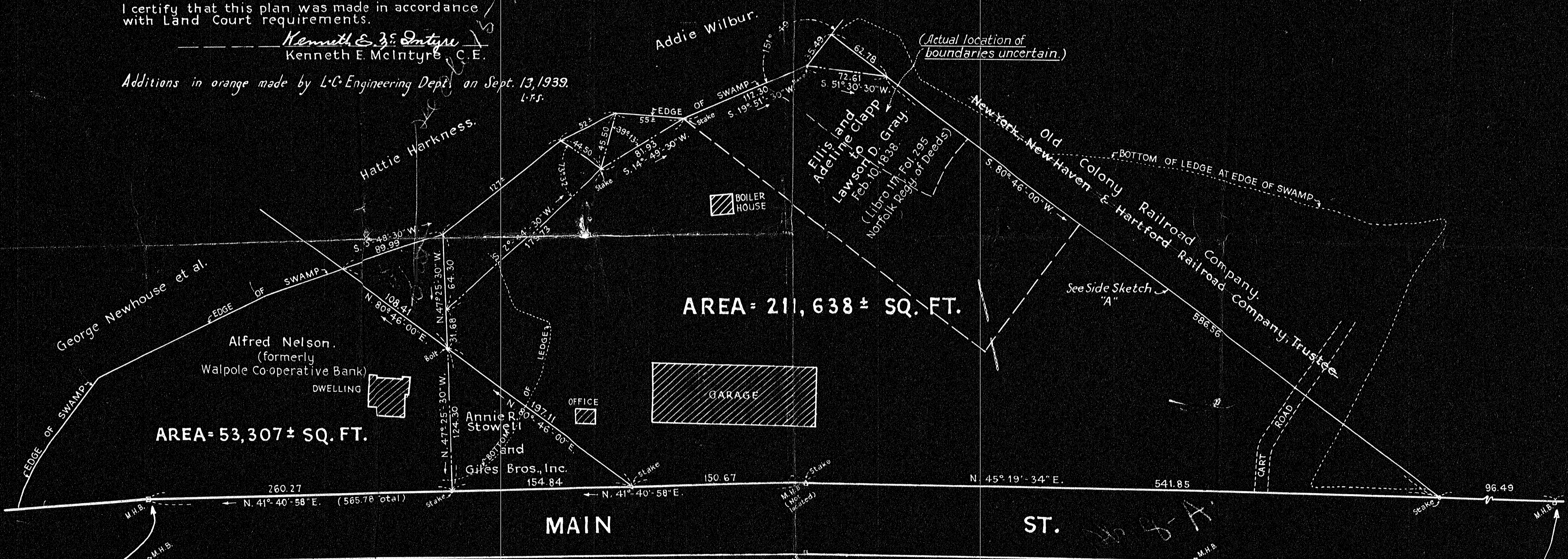
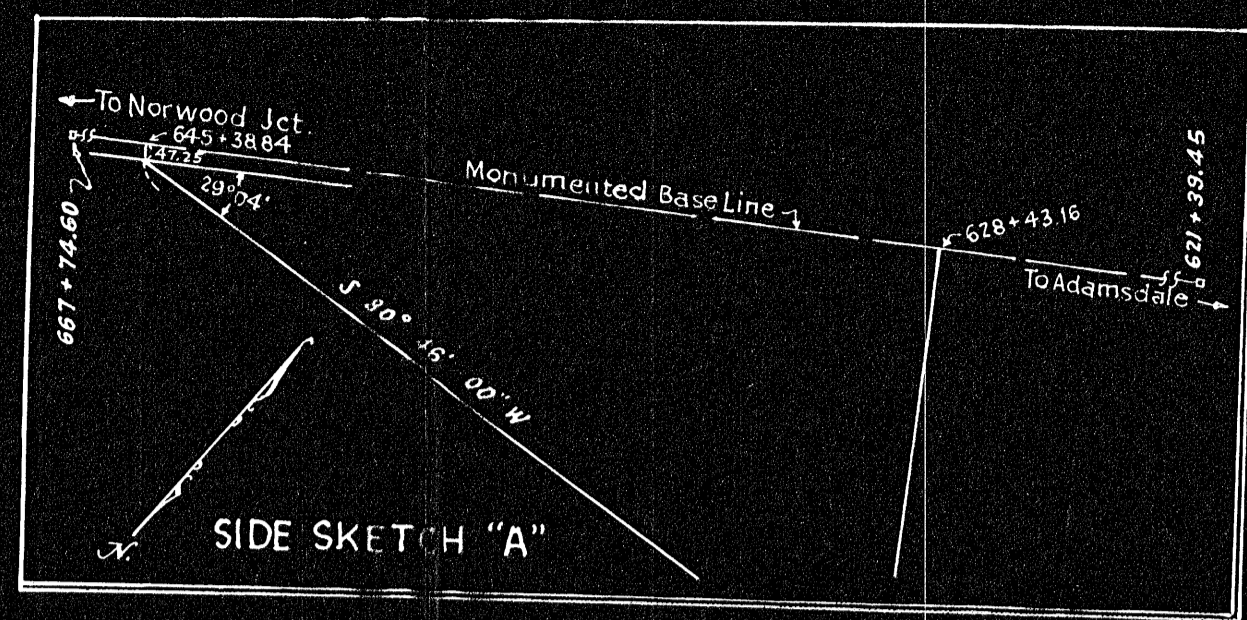
Kenneth E. McIntyre, C.E.
Walpole, Mass.

Traverse Lines shown thus: ————

I certify that this plan was made in accordance with Land Court requirements.

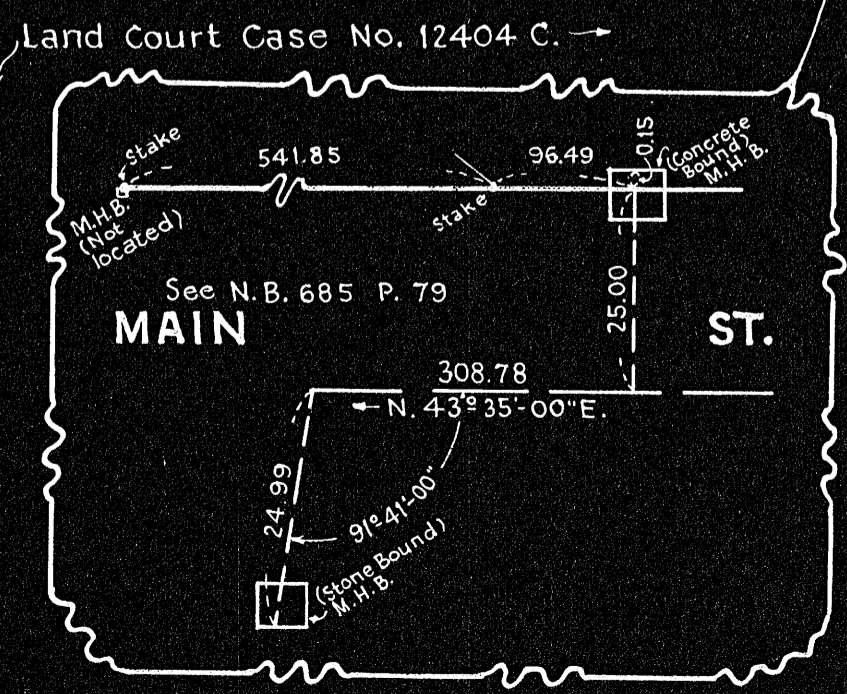
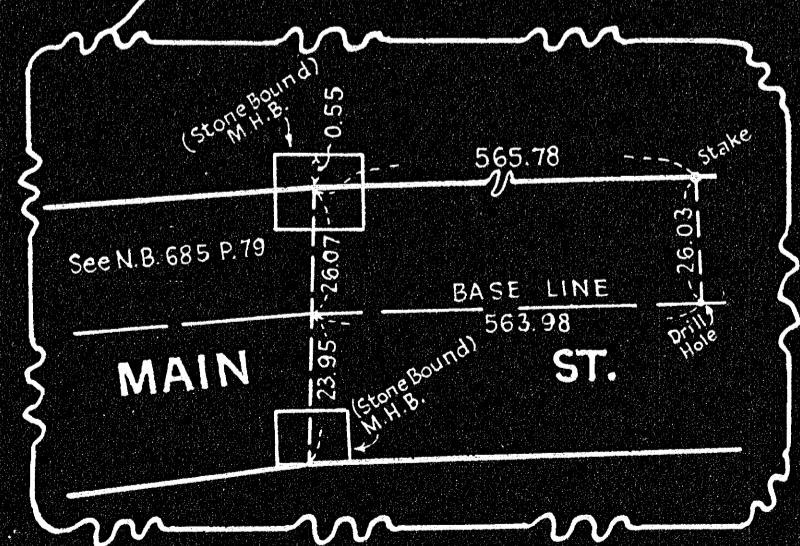
Kenneth E. McIntyre
Kenneth E. McIntyre, C.E.

Additions in orange made by L.C. Engineering Dept. on Sept. 13, 1939.
L.C.S.



AREA = 211,638 ± SQ. FT.

AREA = 53,307 ± SQ. FT.



17264A

#17264