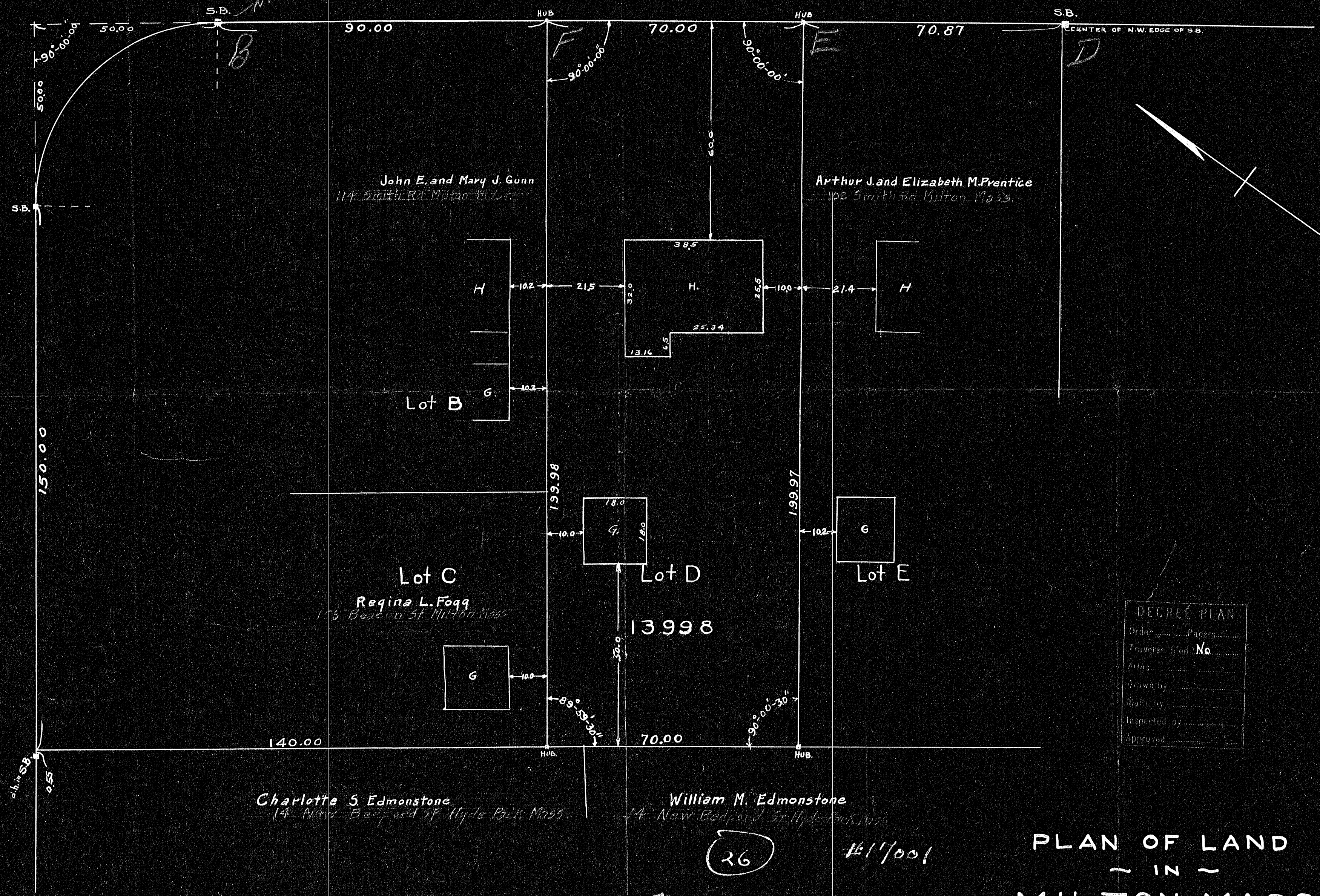


7000A

Letter sent 11/28/38 re street lines
See plan & letter

SMITH ROAD

BEACON ST.



DECREE PLAN
Order Papers
Fee/charge filed No.
Drawn by
Scale by
Inspected by
Approved

I CERTIFY THAT THIS SURVEY WAS MADE IN ACCORDANCE WITH LAND COURT INSTRUCTIONS.
George N. Watson - SURVEYOR.

RECORDED
 NOV-29-38
 P. E. U.

PLAN OF LAND
 ~ IN ~
 MILTON, MASS.
 OCTOBER 29, 1938. SCALE 1 IN. = 20 FT.
 WATSON & McGRATH CIVIL ENGINEERS
 44 CHEEVER ST., MILTON, MASS.

7000A