

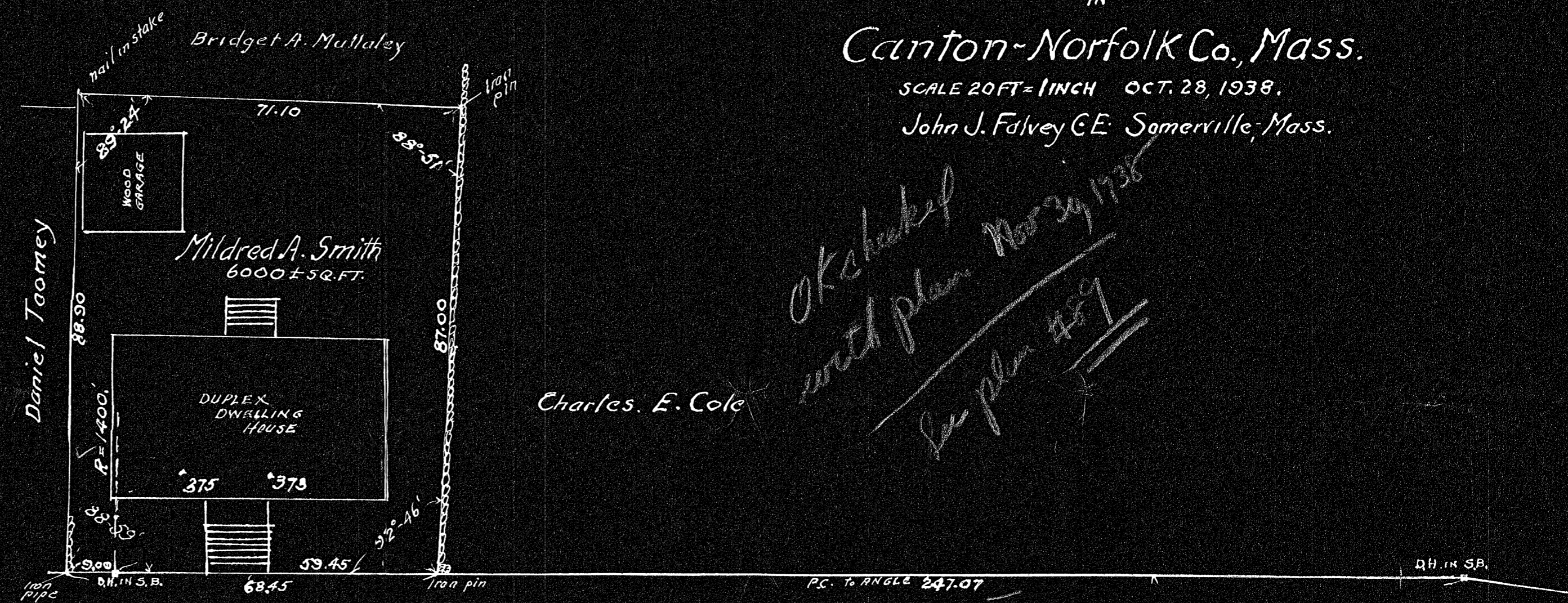
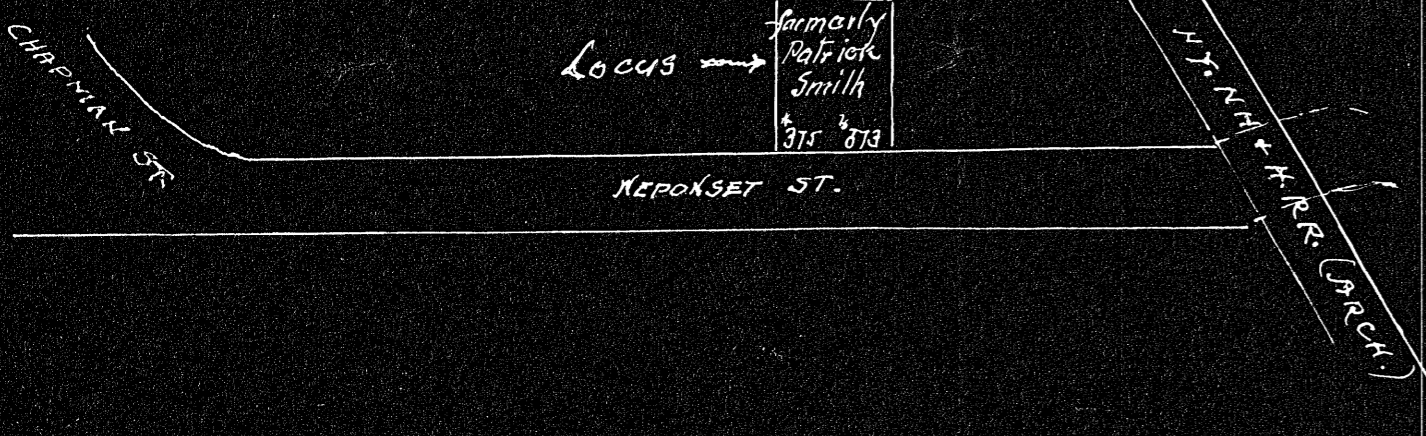
PLAN OF LAND
IN

Canton-Norfolk Co., Mass.

SCALE 20 FT. = 1 INCH OCT. 28, 1938.

John J. Falvey C.E. Somerville, Mass.

*OK checked
with plan Nov 30, 1938
See plan #59*



← To Boston

NEPONSET ST.
COUNTY ROAD - 1928 LAYOUT.

To Stone R.R. Arch →

On Plan

INT. ANG.	EXT. ANG.	AZMUTH	DIST.	+SIN	-SIN	+COS	-COS
88°59'	91°01'	91°01'	88.93	88.91		1.58	
89°24'	90°35'	181°36'	71.10		2.01	71.07	
88°51'	91°10'	272°46'	87.00		86.90		4.20
92°46'	87°14'	360°00'	68.45				68.45
360°00'	360°00'			88.91	88.91	72.65	72.65

#16944



I certify that this survey was made in accordance with Land Court Instructions.
John J. Falvey, Surveyor.
Oct. 28, 1938.