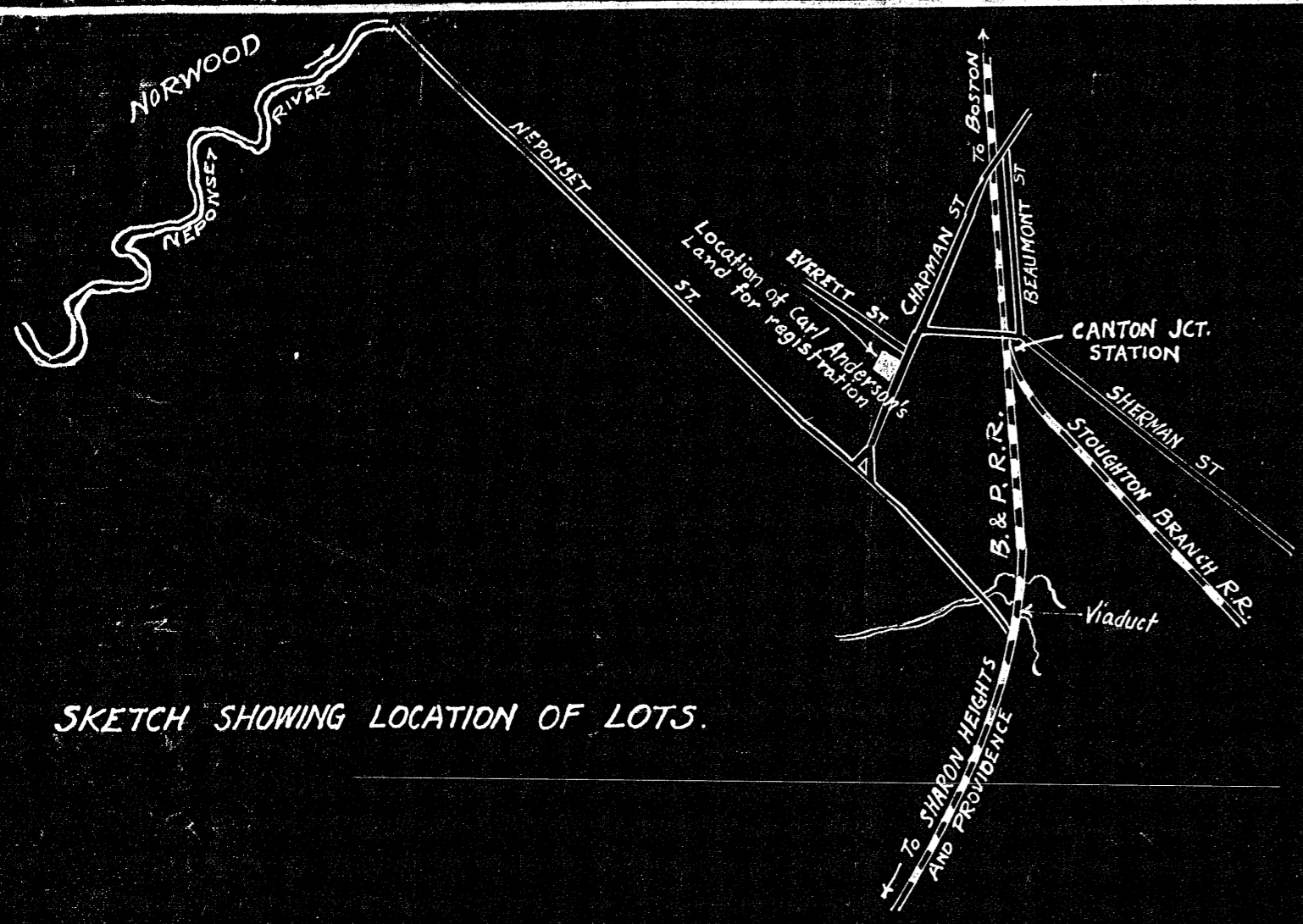
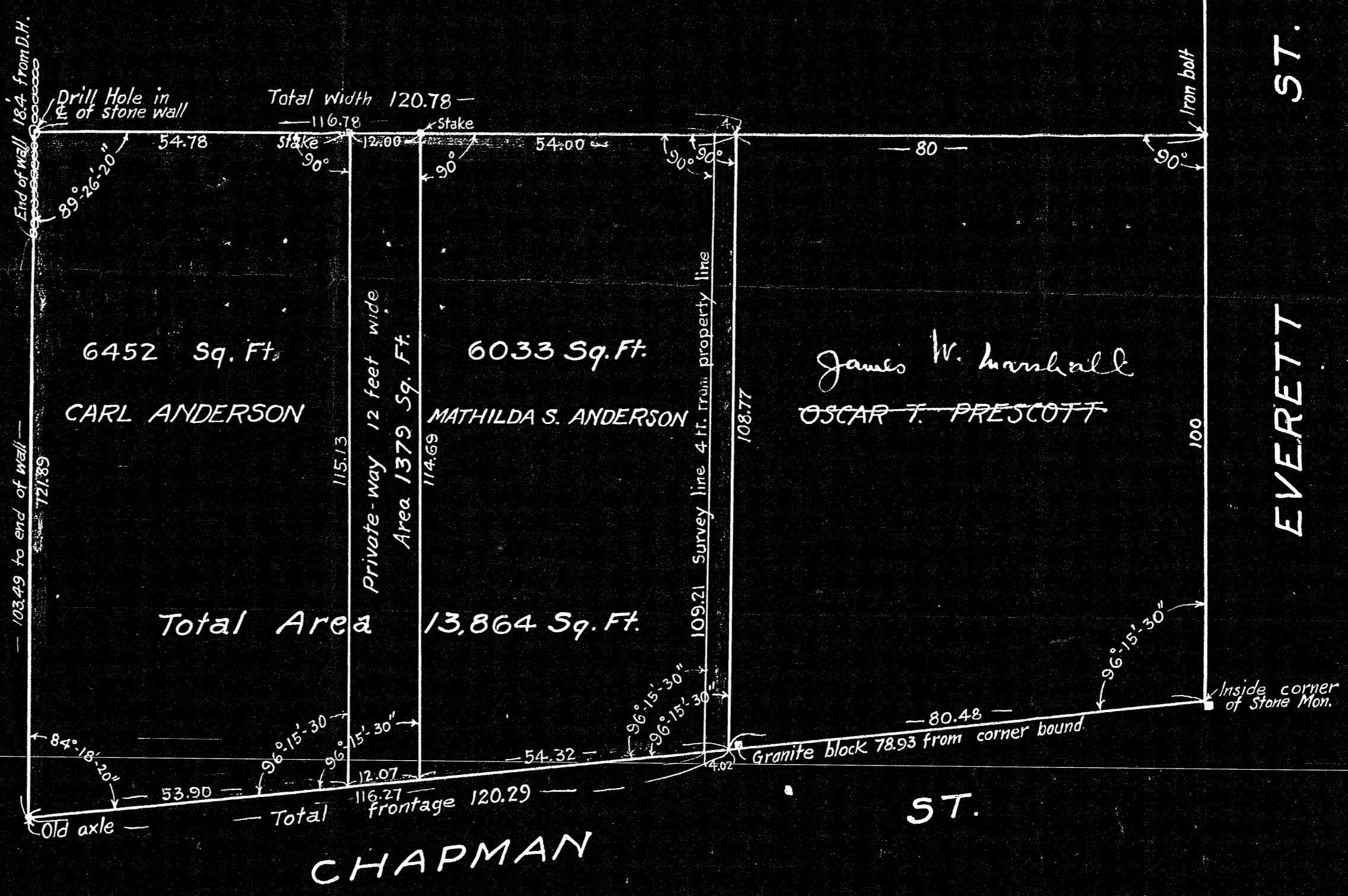


15150A



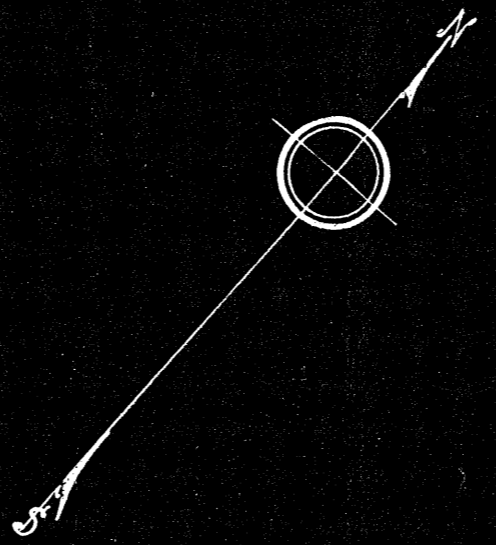
SKETCH SHOWING LOCATION OF LOTS.

CATHERINE E. McCASLIN



15150A

Surveyor's Note: The deeds of the lots shown on this plan (Refer to NORFOLK REGISTRY OF DEEDS, Book 1405, Page 446; Book 986, Page 310 and Book 1320, Page 215) describe the lots as if the angle at the corner of Chapman St. and Everett is 90°. The angle was measured 96°15'30" according to the marks set for the street lines, so it is impossible to conform to the conditions on ground and hold to the distances stated in deeds. Robert B. Bellamy, Surveyor.



PLAN OF LOTS IN
CANTON MASS.
 PROPERTY OF
CARL O. AND MATHILDA S. ANDERSON
 June 1930 Scale: 20 Ft. to 1 Inch.
 Robert B. Bellamy, Surveyor
 25 Eldon St. Dorchester, Mass.

EVERETT

ST.

Original S. Mon.
for corner.

S.M. 2

D.H. in S. Mon.

63.94

90°
30
90°

0.09
Corner 0.09 over
the new line set
by County Engineers
S. Mon.

Matilda Anderson

Carl O. Anderson

ST.

120.29 -
23 Sp. Ft. taken.

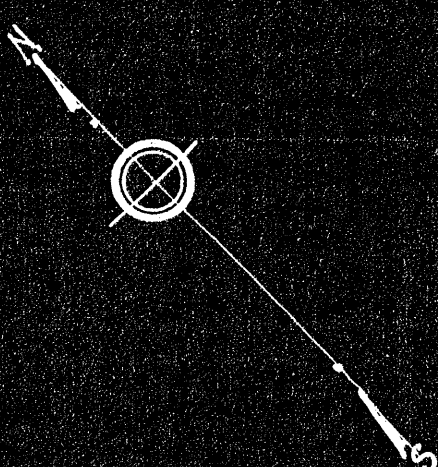
Iron axle 0.30 over
the new line set
by County Engineers.
0.30

N44°34'E 552.48

CHAPMAN

D.H. in S. Mon.

15,150



Plan showing the change in the frontage of Matilda and Carl O. Anderson's lots, which are being registered in the Land Court, due to the new location of the street line of CHAPMAN STREET, CANTON, MASS. as laid down by the County Engineers. Scale= 60 Ft. to 1 Inch. June 30, 1932. Robert B. Bellamy, Surveyor, 25 Eldon St. Dorchester, Mass.

Refer to L.C. Plan 15,150