

15072A

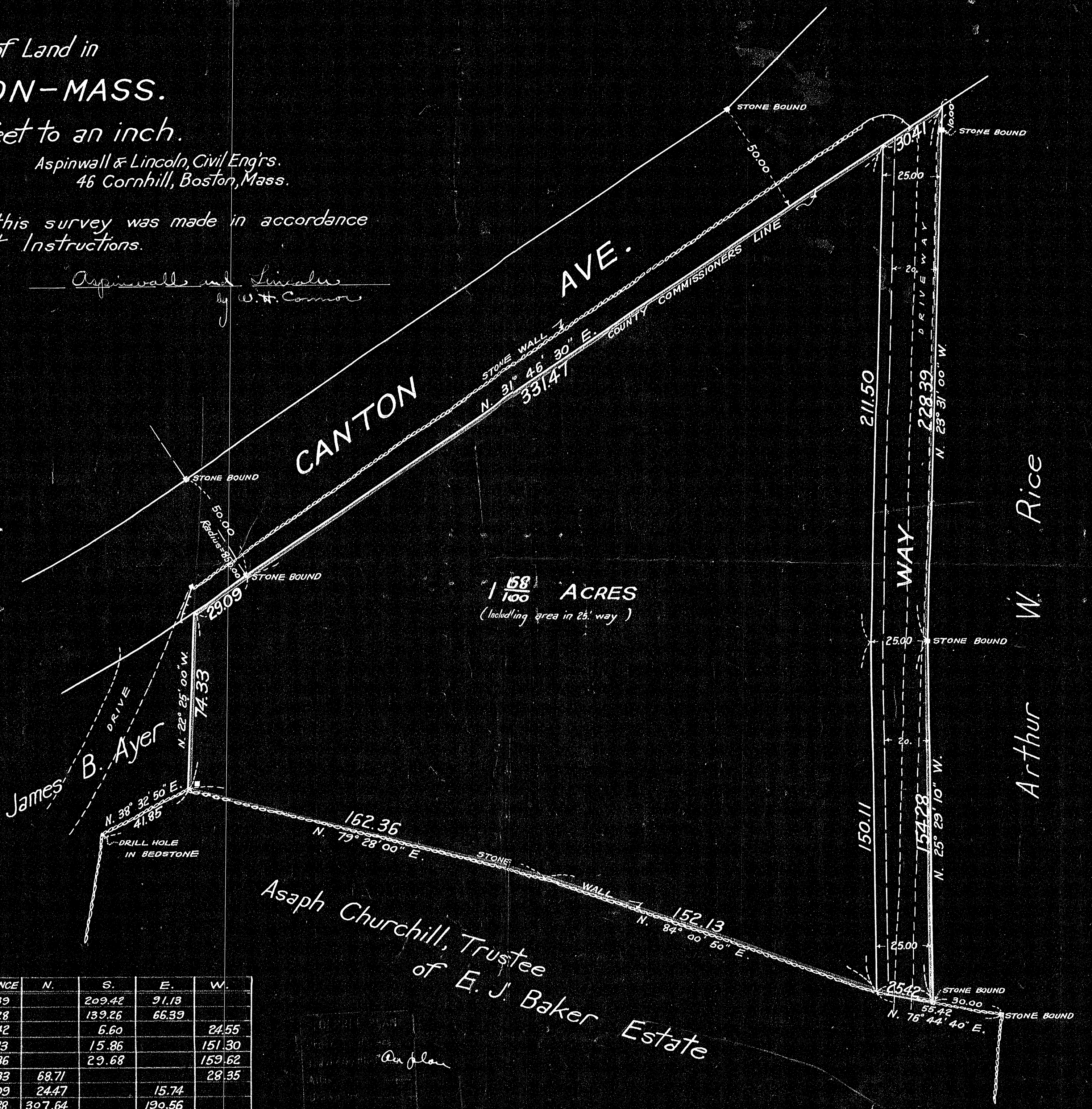
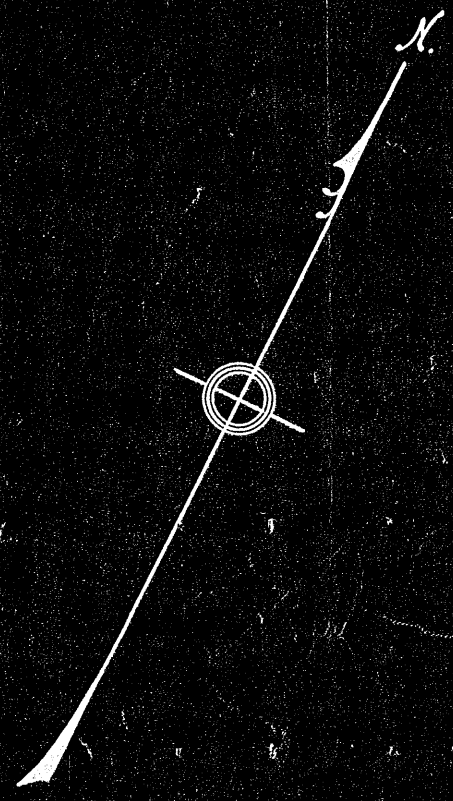
Plan of Land in MILTON-MASS.

Scale 30 feet to an inch.

Dec. 23, 1931. Aspinwall & Lincoln, Civil Engrs.
46 Cornhill, Boston, Mass.

We certify that this survey was made in accordance
with Land Court Instructions.

Aspinwall and Lincoln
by U. H. Connor



$\frac{68}{100}$ ACRES
(Including area in 2 1/2' way)

Arthur W. Rice

Asaph Churchill, Trustee
of E. J. Baker Estate

As plan

INT. ANGLE	DEF. ANGLE	BEARING	DISTANCE	N.	S.	E.	W.
55° 17' 30"	124° 42' 30"	S. 23° 31' 00" E.	228.39		209.42	91.13	
181° 58' 10"	-1° 58' 10"	S. 25° 29' 10" E.	154.28		139.26	66.39	
79° 33' 30"	100° 26' 30"	S. 74° 57' 20" W.	25.42		6.60		24.55
162° 56' 30"	17° 03' 30"	S. 84° 00' 50" W.	152.13		15.86		151.30
184° 32' 50"	-4° 32' 50"	S. 79° 28' 00" W.	162.36		29.68		159.62
101° 52' 40"	78° 07' 20"	N. 22° 25' 00" W.	74.33	68.71			28.35
124° 50' 00"	55° 10' 00"	N. 32° 45' 10" E.	29.09	24.47		15.74	
180° 58' 50"	-0° 58' 50"	N. 31° 46' 30" E.	361.88	307.64		190.56	
				400.82	400.82	363.82	363.82

15072A